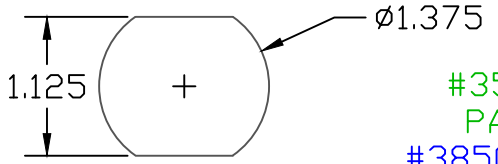


THE INFORMATION CONTAINED IN THIS DRAWING IS THE SOLE PROPERTY OF VTE INCORPORATED. ANY REPRODUCTION IN PART OR WHOLE WITHOUT THE WRITTEN PERMISSION OF VTE INCORPORATED IS PROHIBITED. VTE MAKES NO WARRANTY, EXPRESSED OR IMPLIED, AS TO THE SUITABILITY OF A PRODUCT FOR ANY INTENDED USE. THE CUSTOMER SHALL BEAR THE SOLE RESPONSIBILITY OF DETERMINING THE SUITABILITY OF ANY VTE PRODUCT FOR ITS END USE.

LTR.	REVISIONS	DATE	INT.
------	-----------	------	------

USE GREENLEE PUNCH  
ASSEMBLY #60098  
FOR PANEL CUTOUT



#3550N14 INNER  
PANEL BUSHING  
#3850-001 1/2"-13  
S.S. HEX JAM NUT 2 PLCS.

P/N 3753-000  
BRASS HEX  
THREADED STUD

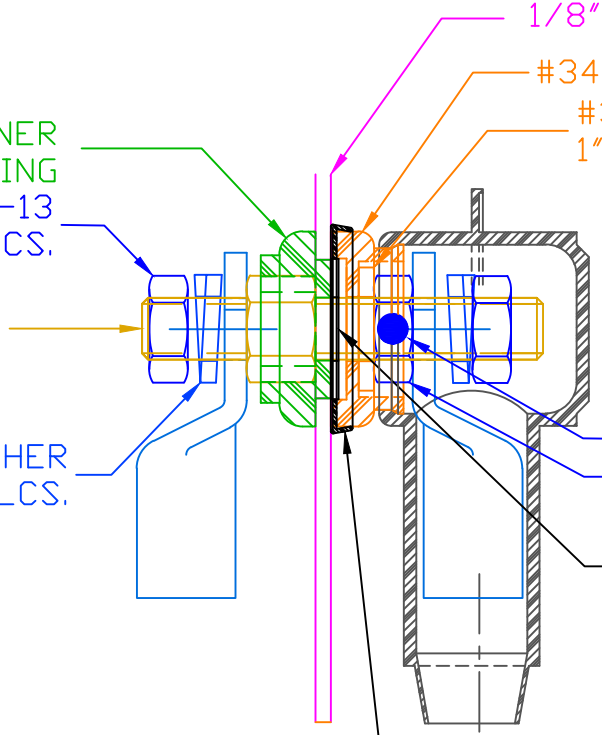
#3650-000 1/2" SS LOCKWASHER  
2 PLCS.

1/8" PANEL  
#3451N14 OUTER PANEL BUSHING  
#3651-000 SS FLAT WASHER  
1" OD X 1/2" ID X .125

BLUE DOT TECHNOLOGY  
#3850-000 1/2"-13 BRASS JAM NUT

P/N 330H5N15  
SPACER INSERT

P/N 379N9V14 PANEL SEAL



SCALE FACTOR : NONE  
ALL DIMENSIONS GIVEN AS: in [mm]  
TOLERANCES UNLESS OTHERWISE SPECIFIED :  
MOLDED PARTS: ±.030" [±0.8mm]  
HARDWARE ITEMS: ±.010" [±0.25mm]

INCLUDES P-16808110001 BLUE DOT MULTI LABEL, 1 PER CONTAINER  
MAXIMUM AMPERAGE: 500 AMPS @ 12VDC


MAXIMUM RECOMMENDED FASTENER TORQUE:  
BRASS JAM NUT: 240 IN./LBS.  
S.S. JAM NUT: 180 IN./LBS.

BASE MATERIAL: GLASS-REINFORCED NYLON  
BASE MATERIAL U.L. RATING: 94 HB

INCLUDES: (1) 232E4V14 WEATHERPROOFING TERMINAL COVER

ITEMS SHOWN FOR ILLUSTRATIVE  
PURPOSE, NOT INCLUDED:

4/0 GA. TERMINAL LUGS (2 PLACES)

		<b>VTE Incorporated</b> 5437 Robinson Road, P.O. Box 790 Pellston, Michigan 49769 Telephone: 1-800-527-9256, 231-539-8000 FAX: 231-539-0914		
		REF:	DATE: 05-25-17	DRN BY: RAS CHK'D BY: RAS
TITLE: POWER BUSHING 1/2" STUD 1/8" MAX PANEL WEATHERPROOF ASSEMBLY			SCALE:	
MATERIAL:		PART NO. 7B5040N14W		
COLOR: BLACK	DRG CLASS			