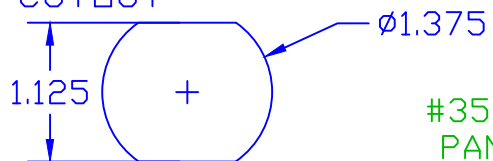


THE INFORMATION CONTAINED IN THIS DRAWING IS THE SOLE PROPERTY OF VTE INCORPORATED. ANY REPRODUCTION IN PART OR WHOLE WITHOUT THE WRITTEN PERMISSION OF VTE INCORPORATED IS PROHIBITED.

VTE MAKES NO WARRANTY, EXPRESSED OR IMPLIED, AS TO THE SUITABILITY OF A PRODUCT FOR ANY INTENDED USE. THE CUSTOMER SHALL BEAR THE SOLE RESPONSIBILITY OF DETERMINING THE SUITABILITY OF ANY VTE PRODUCT FOR ITS END USE.

USE GREENLEE  
PUNCH ASSEMBLY  
#60098 FOR PANEL  
CUTOUT



#3551 N14 INNER  
PANEL BUSHING  
#3850-000 1/2"-13  
BRASS HEX JAM NUT 2 PLCS.

P/N 3753  
BRASS HEX  
THREADED STUD

#3653-000 1/2" BRONZE SPRING WASHER  
2 PLCS.

1/4" PANEL

#3451 N14 OUTER PANEL BUSHING  
#3651-001 BRASS FLAT WASHER  
1" OD X 1/2" ID X .125

BLUE DOT TECHNOLOGY  
#3850-000 1/2"-13 BRASS JAM NUT

P/N 330N5N\*\* SPACER  
(AS REQ'D.) BY INSTRUCTION  
SHEET # 16805110901

P/N 379N9 V14 PANEL SEAL

INCLUDES P-16808110001 BLUE DOT MULTI LABEL, 1 PER CONTAINER  
MAXIMUM AMPERAGE: 500 AMPS @ 12VDC

MAXIMUM RECOMMENDED FASTENER TORQUE:  
BRASS JAM NUT: 240 IN./LBS.  
S.S. JAM NUT: 180 IN./LBS.

INCLUDES: 232E4V14 WEATHERPROOFING TERMINAL COVER

BASE MATERIAL: GLASS-REINFORCED NYLON  
BASE MATERIAL U.L. RATING: 94 HB  
ITEMS SHOWN FOR ILLUSTRATIVE  
PURPOSE, NOT INCLUDED:

4/0 GA. TERMINAL LUGS (2 PLACES)

DO NOT SCALE

TOLERANCE UNLESS OTHERWISE SPECIFIED: ±.030"/±0.8mm  
RADIAL DIAMETERS TO BE MEASURED OVER MANDRELS,  
RING GAGES OR PIN GAGES OF SUITABLE SIZE



VTE Incorporated

5437 Robinson Road, P.O. Box 790  
Pellston, Michigan 49769  
Telephone: 1-800-527-9256, 231-539-8000  
FAX: 231-539-0914

REF: *****	DATE: 09OCT15	DRN BY: RAS	WEIGHT:
		CHK'D BY: RAS	*****
TITLE: POWER BUSHING 1/2" STUD 1/4" MAX PANEL WEATHERPROOF FOR EMP			SCALE:
MATERIAL:		PART NO.	
COLOR: BLACK	DRG CLASS *****	7B5051 N14 WX2	