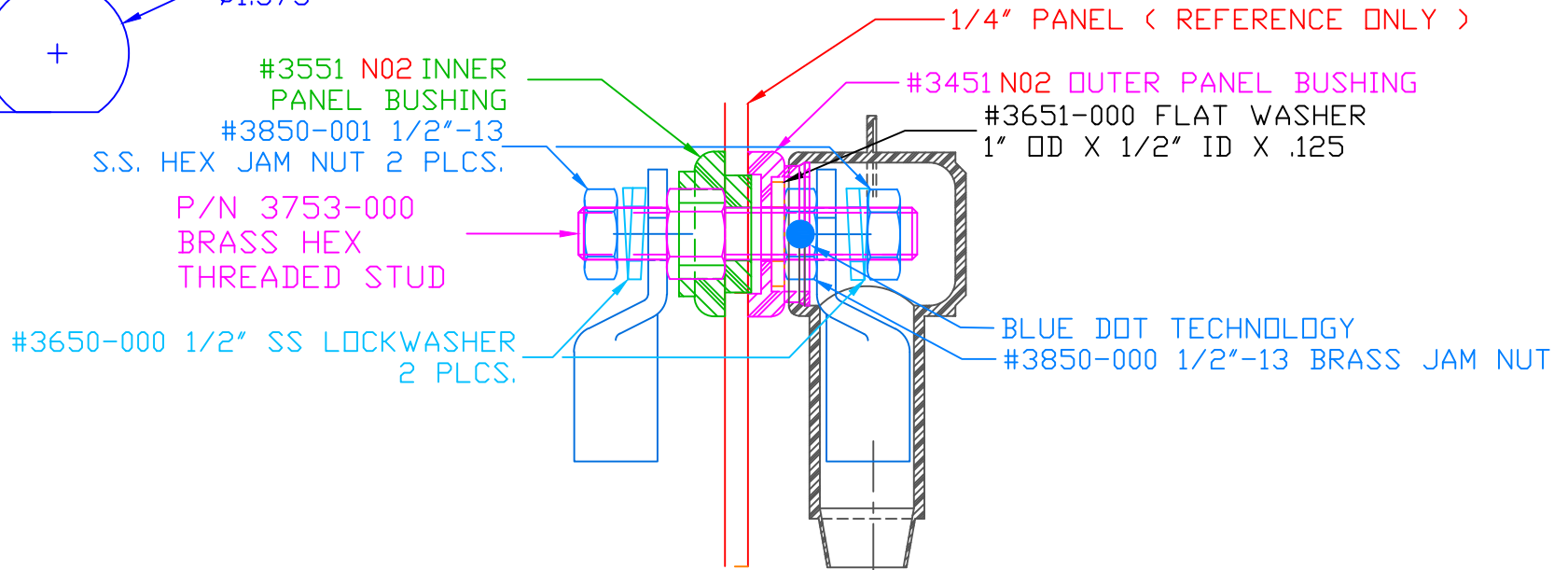
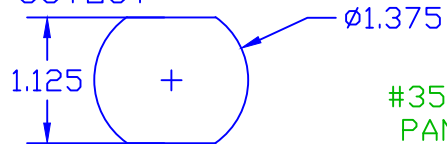


THE INFORMATION CONTAINED IN THIS DRAWING IS THE SOLE PROPERTY OF VTE INCORPORATED. ANY REPRODUCTION IN PART OR WHOLE WITHOUT THE WRITTEN PERMISSION OF VTE INCORPORATED IS PROHIBITED.

VTE MAKES NO WARRANTY, EXPRESSED OR IMPLIED, AS TO THE SUITABILITY OF A PRODUCT FOR ANY INTENDED USE. THE CUSTOMER SHALL BEAR THE SOLE RESPONSIBILITY OF DETERMINING THE SUITABILITY OF ANY VTE PRODUCT FOR ITS END USE.

LTR.	REVISIONS	DATE	INT.
A	3651-001 UPDATED TO 3651-000	21NOV16	RAS
B	ADDED SPACER INSERT NOTE	20MAR17	RAS
C	REMOVED ADDED SPACER INSERT NOTE	11JUL17	RAS

USE GREENLEE
PUNCH ASSEMBLY
#60098 FOR PANEL
CUTOUT




ASSEMBLY BUILT SAME AS 7B5051N02W
MINUS PART #S : 330***** SPACER
379N9*** SEALING GASKET

INCLUDES: 232E4V02 WEATHERPROOFING TERMINAL COVER
INCLUDES P-16808110001 BLUE DOT MULTI LABEL, 1 PER CONTAINER
MAXIMUM AMPERAGE: 500 AMPS @ 12VDC
MAXIMUM RECOMMENDED FASTENER TORQUE:
BRASS JAM NUT: 240 IN./LBS.
S.S. JAM NUT: 180 IN./LBS.
BASE MATERIAL: GLASS-REINFORCED NYLON
BASE MATERIAL U.L. RATING: 94 HB
ITEMS SHOWN FOR ILLUSTRATIVE PURPOSE, NOT INCLUDED: 4/0 GA. TERMINAL LUGS (2 PLACES)

DO NOT SCALE

TOLERANCE UNLESS OTHERWISE SPECIFIED: $\pm 0.30^\circ / \pm 0.8\text{mm}$
RADIAL DIAMETERS TO BE MEASURED OVER MANDRELS,
RING GAGES OR PIN GAGES OF SUITABLE SIZE

		VTE Incorporated 5437 Robinson Road, P.O. Box 790 Pellston, Michigan 49769 Telephone: 1-800-527-9256, 231-539-8000 FAX: 231-539-0914		
		REF:	DATE:	DRN BY: BRH
		02JAN03	CHK'D BY: BRH	
TITLE: POWER BUSHING 1/2" STUD WEATHERPROOF FOR EMP			SCALE:	
MATERIAL:		PART NO.		
COLOR: RED	DRG CLASS REV C	7B5051XN02W		