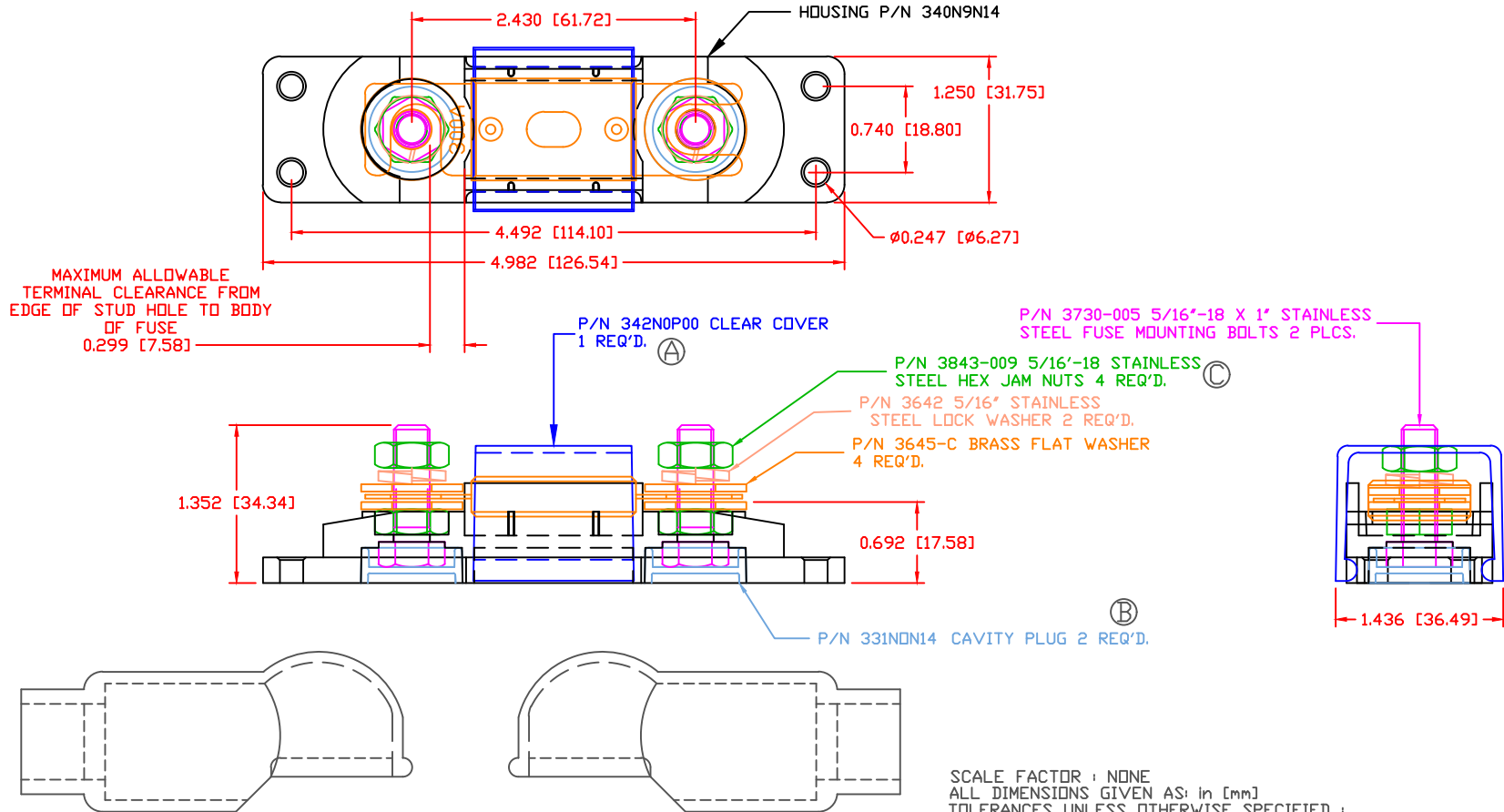


THE INFORMATION CONTAINED IN THIS DRAWING IS THE SOLE PROPERTY OF VTE INCORPORATED. ANY REPRODUCTION IN PART OR WHOLE WITHOUT THE WRITTEN PERMISSION OF VTE INCORPORATED IS PROHIBITED. VTE MAKES NO WARRANTY, EXPRESSED OR IMPLIED, AS TO THE SUITABILITY OF A PRODUCT FOR ANY INTENDED USE. THE CUSTOMER SHALL BEAR THE SOLE RESPONSIBILITY OF DETERMINING THE SUITABILITY OF ANY VTE PRODUCT FOR ITS END USE.

LTR.	REVISIONS	DATE	INT.
A	342N0P00 WAS 342N0V00	07-30-15	BRH
B	PN 331N0V** CHANGED TO PN 331N0N**	08-05-16	MDL
C	REPLACED P/N 3843-001 WITH P/N 3843-009	01-16-17	RAS




SCALE FACTOR : NONE
 ALL DIMENSIONS GIVEN AS: in [mm]
 TOLERANCES UNLESS OTHERWISE SPECIFIED :
 MOLDED PARTS: ±0.30" [±0.8mm]
 HARDWARE ITEMS: ±0.10" [±0.25mm]

FUSE NOT INCLUDED
 ASSEMBLY INCLUDES: 2-487N7V14 INSULATORS

MATERIAL PART NO: 111210514UL
 MATERIAL: GLASS FILLED NYLON
 HYLON N2015 HL BK
 VENDOR PART NO: 1.23
 SPECIFIC GRAVITY: 515 F [268 C]
 MELTING TEMP: UL 94 HB

MAXIMUM RECOMMENDED AMPERAGE: 300 AMPS @ 12 VDC

		VTE Incorporated 5437 Robinson Road, P.O. Box 790 Pellston, Michigan 49769 Telephone: 1-800-527-9256, 231-539-8000 FAX: 231-539-0914	
		REF:	DATE: 3-26-07
TITLE: ANL TYPE FUSE HOLDER		CHK'D BY: BRH	SCALE:
MATERIAL: BLACK		PART NO. ANB740N8N14	
COLOR: BLACK		DRG CLASS: REV C	