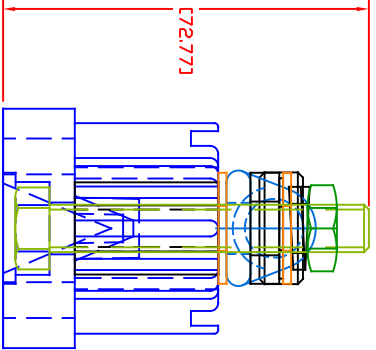
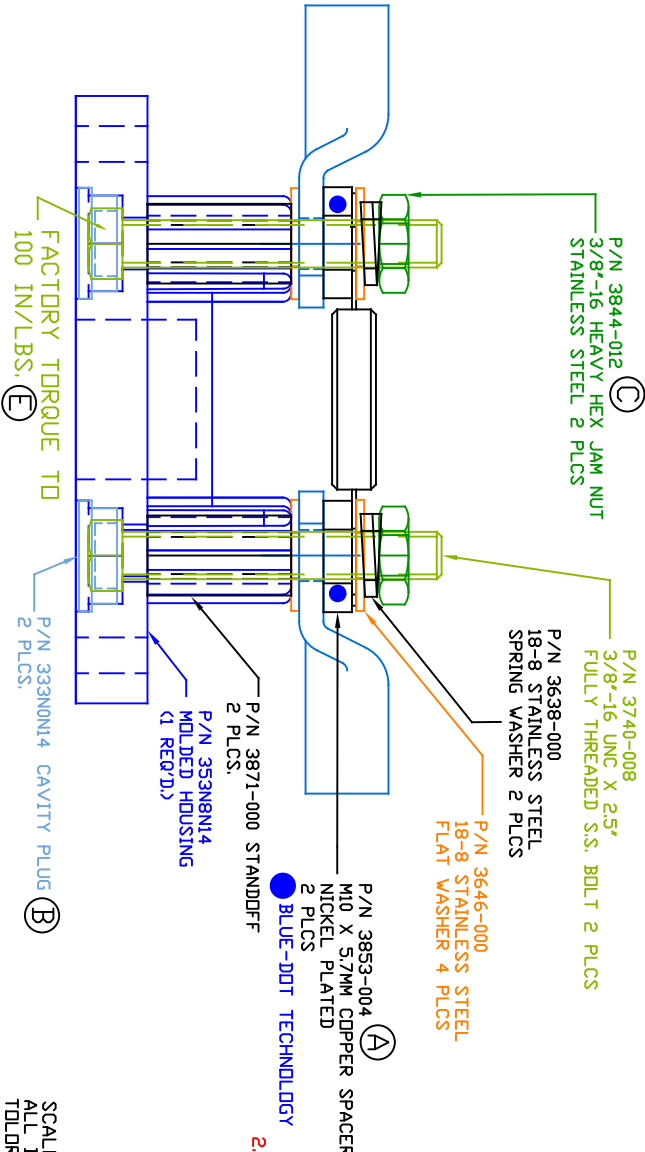
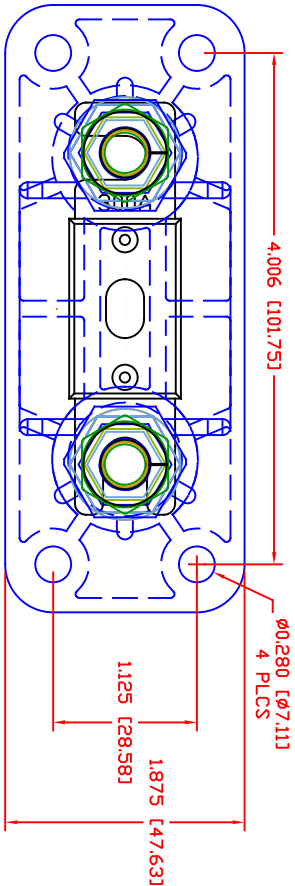



THE INFORMATION CONTAINED IN THIS DRAWING IS THE SOLE PROPERTY OF VTE INCORPORATED. ANY REPRODUCTION IN PART OR WHOLE WITHOUT THE WRITTEN PERMISSION OF VTE INCORPORATED IS PROHIBITED.VTE MAKES NO WARRANTY, EXPRESSED OR IMPLIED, AS TO THE SUITABILITY OF A PRODUCT FOR ANY INTENDED USE. THE CUSTOMER SHALL BEAR THE SOLE RESPONSIBILITY OF DETERMINING THE SUITABILITY OF ANY VTE PRODUCT FOR ITS END USE.



LTR	REVISIONS	DATE	INT.
A	3853-004 WAS 3853-212	08-02-16	RAS
B	3338N0** WAS 3338N0V**	08-22-16	MDL
C	3844-012 WAS 3844-003	11-04-16	JMM
D	ADDED ADDITIONAL INFORMATION FOR PROPER USE	2-19-18	RAS
E	ADDED FACTORY TORQUE SPEC 3740-008	7-09-24	RAS

MAXIMUM AMPERAGE: 750 AMPS @ 12VDC
MAXIMUM VOLTAGE: 32VDC
MAXIMUM RECOMMENDED FASTENER TORQUE: (D)
STAINLESS HEAVY JAM HEX NUT: 180 IN./LBS. [20.3 NM]
MATERIAL PART NO: 111210514UL
GLASS FILLED NYLON
VENDOR PART NO: HYLLON N2015 HL BK
SPECIFIC GRAVITY: 1.23
MELTING TEMP: 515 F [268 C]
UL RATING: UL 94 HB
INCLUDES P-16808110001 BLUE DOT MULTI LABEL, 1 PER CONTAINER
FUSE AND LUG TERMINALS ARE NOT INCLUDED, (SHOWN FOR REFERENCE ONLY)



VTE Incorporated
5437 Robinson Road, P.O. Box 790
Pellston, Michigan 49769
Telephone: 1-800-527-9256, 231-539-8000
FAX: 231-539-0914

REF:	DATE:	DRN BY:	TJH	WEIGHT:
CUSTOMER DIMS	12-14-14	CHK'D BY:	BRH	
TITLE: FUSE HOLDER, HIGH AMP ANL 3/8" STUDS WITHOUT COVER SPECIAL FOR CALIFORNIA MFG.				
MATERIAL: GLASS FILLED NYLON		PART NO: ANB753X8N14		
COLOR: BLACK	DRG CLASS	REV E		

SCALE FACTOR : NONE
ALL DIMENSIONS GIVEN AS: in [mm]
TOLERANCES UNLESS OTHERWISE SPECIFIED :
MOLDED PARTS: ±.030" [±0.8mm]
HARDWARE ITEMS: ±.010" [±0.25mm]