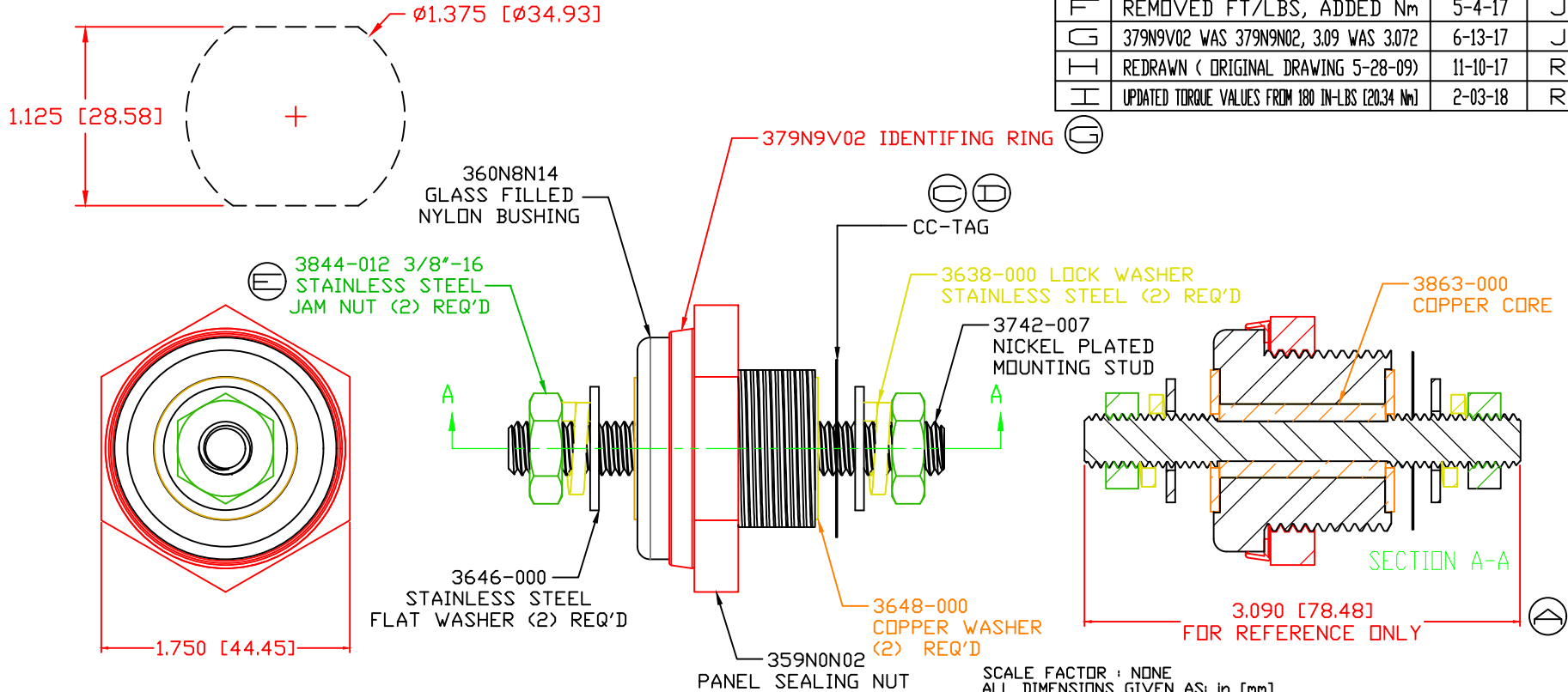


THE INFORMATION CONTAINED IN THIS DRAWING IS THE SOLE PROPERTY OF VTE INCORPORATED. ANY REPRODUCTION IN PART OR WHOLE WITHOUT THE WRITTEN PERMISSION OF VTE INCORPORATED IS PROHIBITED. VTE MAKES NO WARRANTY, EXPRESSED OR IMPLIED, AS TO THE SUITABILITY OF A PRODUCT FOR ANY INTENDED USE. THE CUSTOMER SHALL BEAR THE SOLE RESPONSIBILITY OF DETERMINING THE SUITABILITY OF ANY VTE PRODUCT FOR ITS END USE.

USE GREENLEE PUNCH
ASSEMBLY #60098
FOR PANEL CUTOUT



LTR.	REVISIONS	DATE	INT.
A	3.07" WAS 3.25"	5-11-10	BRH
B	REDUCED FROM 550 AMP	12-17-15	RAS
C	ADDED TORQUE TAG	12-29-15	RAS
D	MOVED TORQUE TAG TO OPPOSITE POST	1-27-16	RAS
E	3844-012 WAS 3844-003	11-04-16	JMM
F	REMOVED FT/LBS, ADDED Nm	5-4-17	JMM
G	379N9V02 WAS 379N9N02, 3.09 WAS 3.072	6-13-17	JMM
H	REDRAWN (ORIGINAL DRAWING 5-28-09)	11-10-17	RAS
I	UPDATED TORQUE VALUES FROM 180 IN-LBS [20.34 Nm]	2-03-18	RAS

Ⓜ MAXIMUM FASTENER TORQUES:
 Ⓜ JAM NUTS: 212 IN-LBS [24.0 Nm] Ⓜ
 Ⓜ SEALING NUT: 120 IN-LBS [13.56 Nm]

CURRENT CARRYING CAPACITY:
 DUTY CYCLE: 80%
 CURRENT CAPACITY: 5.2 Kw (440 AMP @ 12VDC) Ⓜ
 TEMPORARY MAX (12 MINUTES): 6.6 Kw (550 AMP @ 12VDC) Ⓜ

MATERIAL PART NO: 111210514UL
 MATERIAL: GLASS FILLED NYLON
 VENDOR PART NO: NYLON N2015 HL BK
 SPECIFIC GRAVITY: 1.23
 MELTING TEMP: 515 F [268 C]
 U.L. RATING: UL 94 HB

SCALE FACTOR : NONE
 ALL DIMENSIONS GIVEN AS: in [mm]
 TOLERANCES UNLESS OTHERWISE SPECIFIED :
 MOLDED PARTS: ±.030" [±0.8mm]
 HARDWARE ITEMS: ±.010" [±0.25mm]

VTE Incorporated
 5437 Robinson Road, P.O. Box 790
 Pellston, Michigan 49769
 Telephone: 1-800-527-9256, 231-539-8000
 FAX: 231-539-0914

REF: CUSTOMER DIMS	DATE: 11-10-17	DRN BY: RAS	WEIGHT:
TITLE: 3/8" POWER BUSHING, COPPER CORE		CHK'D BY: PJK	
MATERIAL: GLASS FILLED NYLON	PART NO. CCB376N0N02		
COLOR: RED	DRG CLASS: REV I		