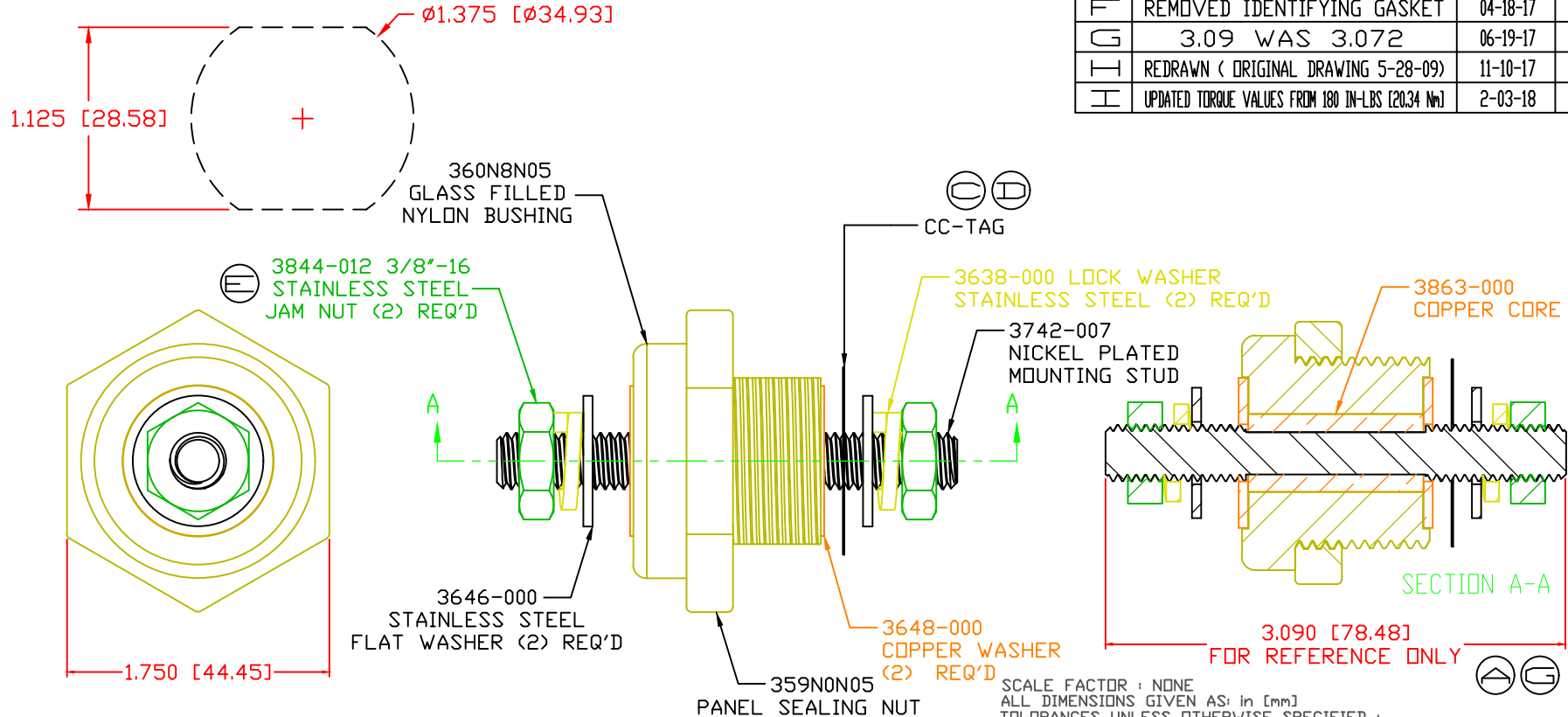


THE INFORMATION CONTAINED IN THIS DRAWING IS THE SOLE PROPERTY OF VTE INCORPORATED. ANY REPRODUCTION IN PART OR WHOLE WITHOUT THE WRITTEN PERMISSION OF VTE INCORPORATED IS PROHIBITED. VTE MAKES NO WARRANTY, EXPRESSED OR IMPLIED, AS TO THE SUITABILITY OF A PRODUCT FOR ANY INTENDED USE. THE CUSTOMER SHALL BEAR THE SOLE RESPONSIBILITY OF DETERMINING THE SUITABILITY OF ANY VTE PRODUCT FOR ITS END USE.

USE GREENLEE PUNCH
ASSEMBLY #60098
FOR PANEL CUTOUT



LTR.	REVISIONS	DATE	INT.
A	3.07" WAS 3.25"	5-11-10	BRH
B	REDUCED FROM 550 AMP	11-17-15	RAS
C	ADDED TORQUE TAG	12-29-15	RAS
D	MOVED TORQUE TAG TO OPPOSITE POST	1-27-16	RAS
E	3844-012 WAS 3844-003	11-04-16	JMM
F	REMOVED IDENTIFYING GASKET	04-18-17	RAS
G	3.09 WAS 3.072	06-19-17	JMM
H	REDRAWN (ORIGINAL DRAWING 5-28-09)	11-10-17	RAS
I	UPDATED TORQUE VALUES FROM 180 IN-LBS [20.34 Nm]	2-03-18	RAS

SCALE FACTOR : NONE
ALL DIMENSIONS GIVEN AS: in [mm]
TOLERANCES UNLESS OTHERWISE SPECIFIED :
MOLDED PARTS: ±.030" [±0.8mm]
HARDWARE ITEMS: ±.010" [±0.25mm]

Ⓜ MAXIMUM FASTENER TORQUES:
JAM NUTS: 212 IN-LBS [24.0 Nm] Ⓧ
SEALING NUT: 120 IN-LBS [13.56 Nm]

CURRENT CARRYING CAPACITY: 80%
DUTY CYCLE: 5.2 Kw (440 AMP @ 12VDC) Ⓛ
CURRENT CAPACITY: 6.6 Kw (550 AMP @ 12VDC) Ⓛ
TEMPORARY MAX (12 MINUTES)

MATERIAL PART NO: 7111210505
MATERIAL: GLASS FILLED NYLON
VENDOR PART NO: DURETHAN BKV 15 H 3.0 00000
SPECIFIC GRAVITY: 1.23
MELTING TEMP: 415 F [213 C]
U.L. RATING: UL 94 HB

VTE Incorporated
5437 Robinson Road, P.O. Box 790
Pellston, Michigan 49769
Telephone: 1-800-527-9256, 231-539-8000
FAX: 231-539-0914

REF: CUSTOMER DIMS	DATE: 11-10-17	DRN BY: RAS	WEIGHT:
TITLE: 3/8" POWER BUSHING, COPPER CORE		CHK'D BY: PJK	
MATERIAL: GLASS FILLED NYLON	PART NO. CCB376N0N05		
COLOR: YELLOW	DRG CLASS: REV I		