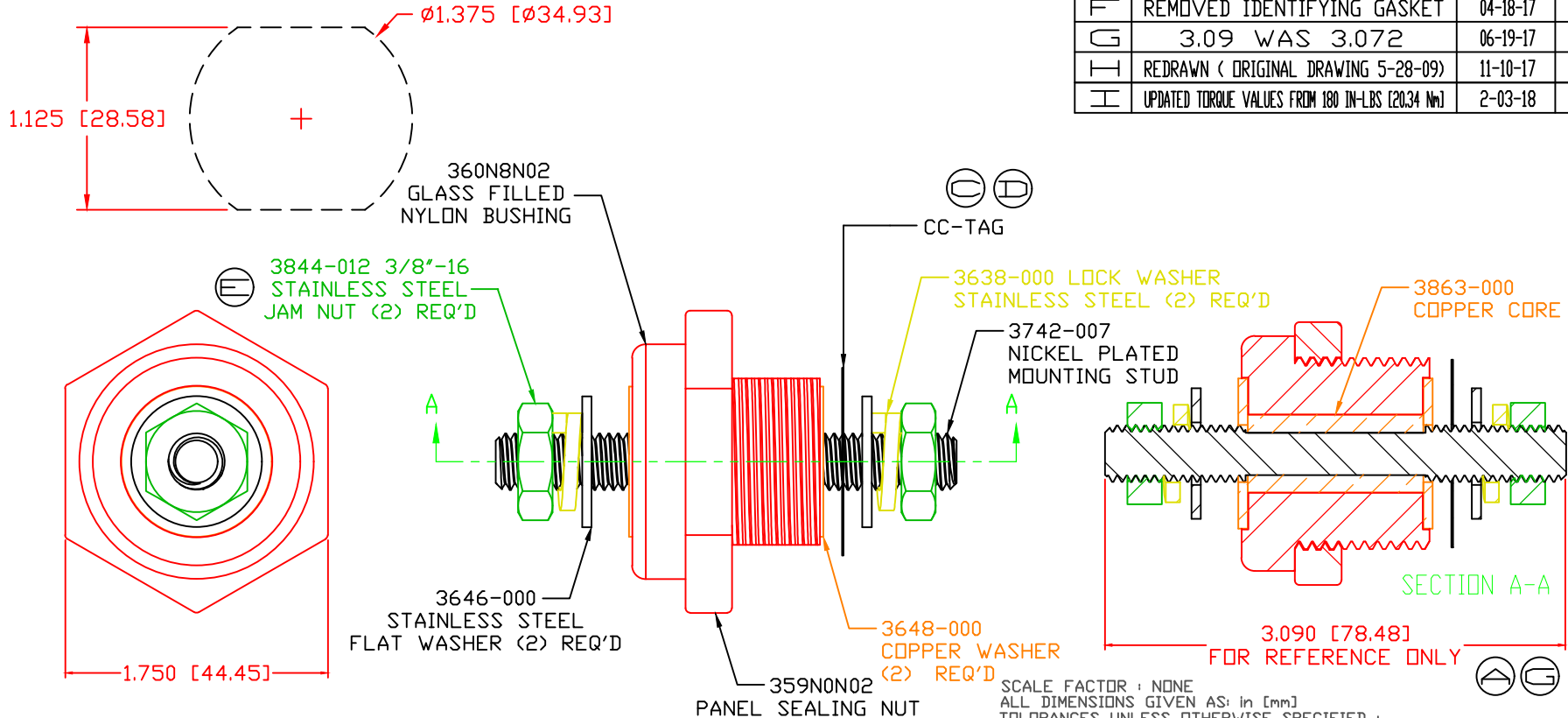


THE INFORMATION CONTAINED IN THIS DRAWING IS THE SOLE PROPERTY OF VTE INCORPORATED. ANY REPRODUCTION IN PART OR WHOLE WITHOUT THE WRITTEN PERMISSION OF VTE INCORPORATED IS PROHIBITED. VTE MAKES NO WARRANTY, EXPRESSED OR IMPLIED, AS TO THE SUITABILITY OF A PRODUCT FOR ANY INTENDED USE. THE CUSTOMER SHALL BEAR THE SOLE RESPONSIBILITY OF DETERMINING THE SUITABILITY OF ANY VTE PRODUCT FOR ITS END USE.

USE GREENLEE PUNCH  
ASSEMBLY #60098  
FOR PANEL CUTOUT




| LTR. | REVISIONS  | DATE     | INT. |
|------|--|----------|------|
| A    | 3.07" WAS 3.25"                                  | 5-11-10  | BRH  |
| B    | REDUCED FROM 550 AMP                             | 11-17-15 | RAS  |
| C    | ADDED TORQUE TAG                                 | 12-29-15 | RAS  |
| D    | MOVED TORQUE TAG TO OPPOSITE POST                | 1-27-16  | RAS  |
| E    | 3844-012 WAS 3844-003                            | 11-04-16 | JMM  |
| F    | REMOVED IDENTIFYING GASKET                       | 04-18-17 | RAS  |
| G    | 3.09 WAS 3.072                                   | 06-19-17 | JMM  |
| H    | REDRAWN ( ORIGINAL DRAWING 5-28-09)              | 11-10-17 | RAS  |
| I    | UPDATED TORQUE VALUES FROM 180 IN-LBS [20.34 Nm] | 2-03-18  | RAS  |

SCALE FACTOR : NONE  
ALL DIMENSIONS GIVEN AS: in [mm]  
TOLERANCES UNLESS OTHERWISE SPECIFIED :  
MOLDED PARTS: ±.030" [±0.8mm]  
HARDWARE ITEMS: ±.010" [±0.25mm]

⊕ MAXIMUM FASTENER TORQUES:  
JAM NUTS: 212 IN-LBS [24.0 Nm]  
SEALING NUT: 120 IN-LBS [13.5 Nm]

CURRENT CARRYING CAPACITY:  
DUTY CYCLE: 80%  
CURRENT CAPACITY: 5.2 Kw (440 AMP @ 12VDC)  
TEMPORARY MAX (12 MINUTES): 6.6 Kw (550 AMP @ 12VDC) ⊕

MATERIAL PART NO: 7111210502  
MATERIAL: GLASS FILLED NYLON  
VENDOR PART NO: NYLON N2015 HL NAT  
SPECIFIC GRAVITY: 1.23  
MELTING TEMP: 515 F [268 C]  
U.L. RATING: UL 94 HB



VTE Incorporated  
5437 Robinson Road, P.O. Box 790  
Pellston, Michigan 49769  
Telephone: 1-800-527-9256, 231-539-8000  
FAX: 231-539-0914

|  |                  |                       |         |
|--|------------------|-----------------------|---------|
| REF: CUSTOMER DIMS                     | DATE: 11-10-17   | DRN BY: RAS           | WEIGHT: |
|  |                  | CHK'D BY: PJK         |         |
| TITLE: 3/8" POWER BUSHING, COPPER CORE |                  |                       |         |
| MATERIAL: GLASS FILLED NYLON           |                  | PART NO. CCB376N0NR02 |         |
| COLOR: RED                             | DRG CLASS: REV I |                       |         |