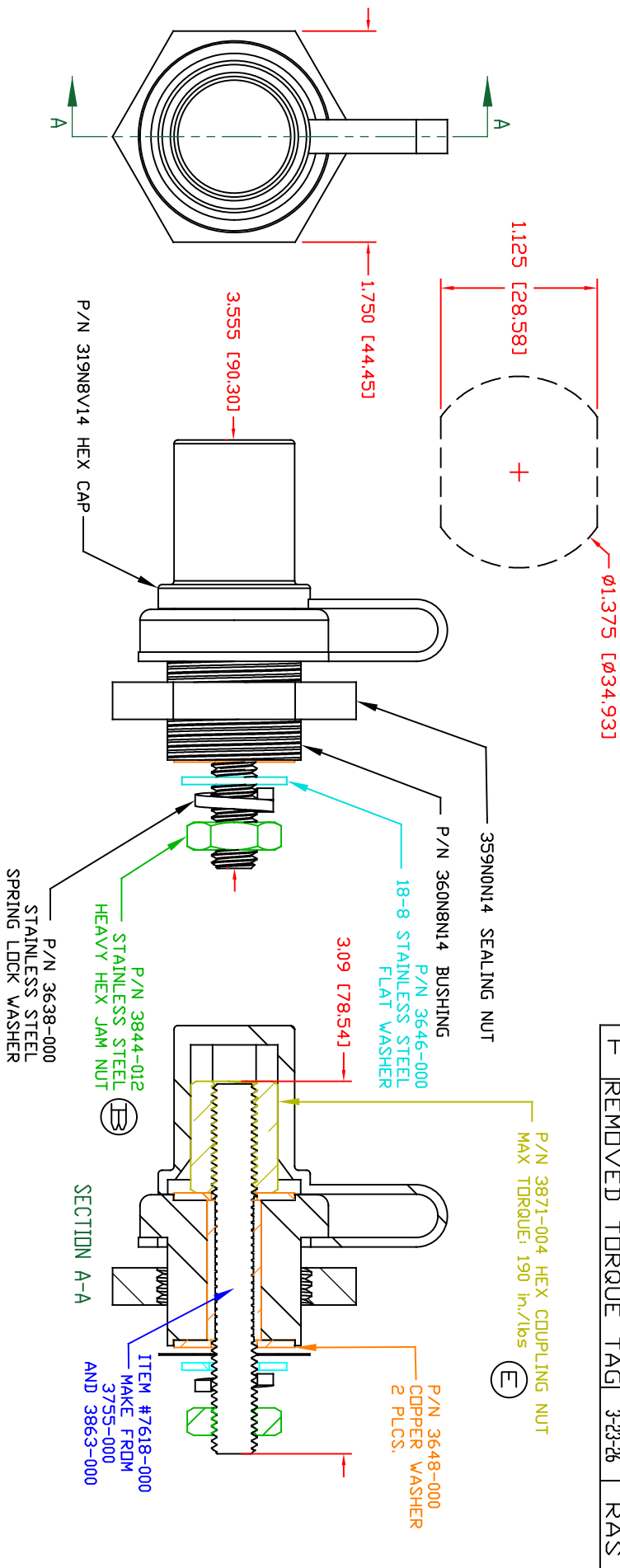


THE INFORMATION CONTAINED IN THIS DRAWING IS THE SOLE PROPERTY OF VTE INCORPORATED. ANY REPRODUCTION IN PART OR WHOLE WITHOUT THE WRITTEN PERMISSION OF VTE INCORPORATED IS PROHIBITED. VTE MAKES NO WARRANTY, EXPRESSED OR IMPLIED, AS TO THE SUITABILITY OF A PRODUCT FOR ANY INTENDED USE. THE CUSTOMER SHALL BEAR THE SOLE RESPONSIBILITY OF DETERMINING THE SUITABILITY OF ANY VTE PRODUCT FOR ITS END USE.

USE GREENLEE PUNCH
ASSEMBLY #60098
FOR PANEL CUTOUT




LT#	REVISIONS	DATE	INT.
A	ADDED TORQUE TAG	12-29-15	RAS
B	3844-012 WAS 3844-003	11-04-16	JMM
C	UPDATED TORQUE VALUES FROM 180 IN-LBS (20.34 Nm)	2-09-18	RAS
D	REDRAWN AND UPDATED	12-20-18	RAS
E	HEX COUPLING NUT TORQUE VALUE ADDED	09-03-20	EJE
F	REMOVED TORQUE TAG	3-23-26	RAS

MAXIMUM FASTENER TORQUES:
JAM NUTS: 212 IN-LBS [24.0 Nm]
SEALING NUT: 120 IN-LBS [13.56 Nm]

MATERIAL PART NO: 111210514UL
MATERIAL: GLASS FILLED NYLON
VENDOR PART NO: HYLON N2015 HL BK
SPECIFIC GRAVITY: 1.23
MELTING TEMP: 515 F [268 C]
UL RATING: UL 94 HB
CURRENT CARRYING CAPACITY: 350 AMPS @ 12VDC

SCALE FACTOR: 1 NONE
ALL DIMENSIONS GIVEN AS: In [mm]
TOLERANCES UNLESS OTHERWISE SPECIFIED:
MOLDED PARTS: ±0.30" [±0.8mm]
HARDWARE ITEMS: ±.010" [±0.25mm]



VTE Incorporated
5437 Robinson Road, P.O. Box 790
Pellston, Michigan 49769
Telephone: 1-800-527-9256, 231-539-8000
FAX: 231-539-0914

REF#	DATE	DRN BY:	RAS	WEIGHT:
CUSTOMER DIMS	12-20-18	CHK'D BY: PJK		
TITLE: 3/8"-16 POWER BUSHING JUMPER COPPER CORE 350 AMP				
MATERIAL: GLASS FILLED NYLON		PART NO: CCJB376N0N14		
COLOR: BLACK		DRG CLASS: REV F		