

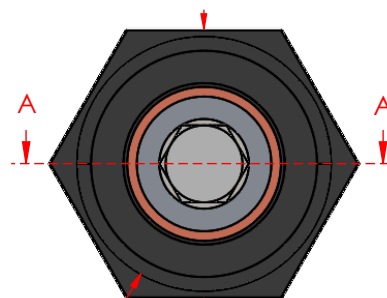
SECTION A-A

PANEL CUT-OUT

Ø 1.281 [32.54]

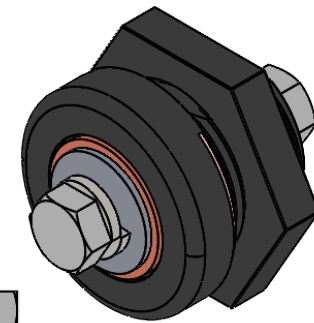
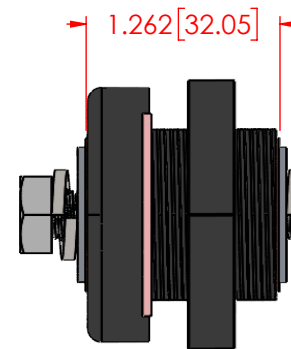
1.125 [28.58]

Terminal Lug  
Thickness  
Min 0.125 [3.17]  
Max 0.3125 [7.93]



Ø 1.650 [41.91]

1.750 [44.45]



REVISIONS

REV.	DESCRIPTION	DATE	APPROVED
A	80 IN./LBS. [9.0Nm] was 120 IN./LBS. [13.56Nm]	9/16/2024	RAS
B	Added "Bulk Packed" Note	9/19/2024	RAS

BULK PACKED SEPERATELY

ITEM NO.	PART NUMBER	DESCRIPTION	QTY.
1	3960-005	Norseal Red Silicone Gasket	1

ITEM NO.	PART NUMBER	DESCRIPTION	QTY.
2	3730-018	5/16"-24 18-8 Stainless Steel Bolt .75" Long	2
3	3638-002	M8 18-8 Stainless Steel Lock Washer	2
4	3645-000	5/16" 18-8 Stainless Steel Flat Washer	2
5	3648-010	1/2" Copper Contact Washer	2
6	362N0N14	Nylon Power Bushing Housing (Black)	1
7	359N0N14	Glass Filled Nylon Locking Nut (Black)	1
8	3865-002	5/16"-24 Threaded Copper Core	1
9	3962-000	SBR Rubber Grommet	1

CABLE TEMP RATING : 60c 90c 105c 125c  
CURRENT RATING @ 12vdc : 275A 380A 440A 490A  
TEMPORARY MAX @ 12vdc : 305A 415A 475A 535A

MAXIMUM VOLTAGE : 48 VDC

MATERIAL PART NO: 1111210514UL  
MATERIAL: GLASS FILLED NYLON  
VENDOR PART NO: HYLON N2015 HL BK

MAX 5/16" FASTENER TORQUE: 144 IN./LBS. [16.27 Nm]  
MAX NYLON NUT TORQUE: 80 IN./LBS. [9.0 Nm]

Assembly Weight : 0.24 Lbs. [108.8g]

Assembly Color : Black

ALL DIMENSIONS GIVEN AS : INCH [METRIC]  
TOLERANCES UNLESS OTHERWISE SPECIFIED :  
MOLDED PRODUCTS : ±.030" / ±0.8mm  
HARDWARE PRODUCTS : ±.010" / ±0.25mm

PRINTED COPIES ARE NOT CONTROLLED

**PROPRIETARY AND CONFIDENTIAL**

THE INFORMATION CONTAINED IN THIS  
DRAWING IS THE SOLE PROPERTY OF  
VTE INCORPORATED. ANY REPRODUCTION  
IN PART OR AS A WHOLE WITHOUT THE WRITTEN  
PERMISSION OF VTE INCORPORATED PROHIBITED.



**VTE INCORPORATED**

5437 Robinson Road, P.O. Box 790  
Pellston, Michigan 49769 USA  
Telephone : 1-800-527-9256, 231-539-8000  
Fax : 231-539-0914, EFax : 231-344-5914

REV **B**  
SIZE **A**

NAME	DATE
DRAWN BY: RAS	3-23-23
CHECKED BY: PJK	3-23-23
DO NOT SCALE DRAWING	

TITLE:  
5/16" Waterproof Power Bushing with .75" Long Bolts

DWG. NO.

**ICB318N14**