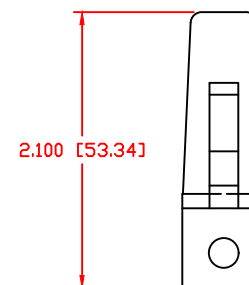
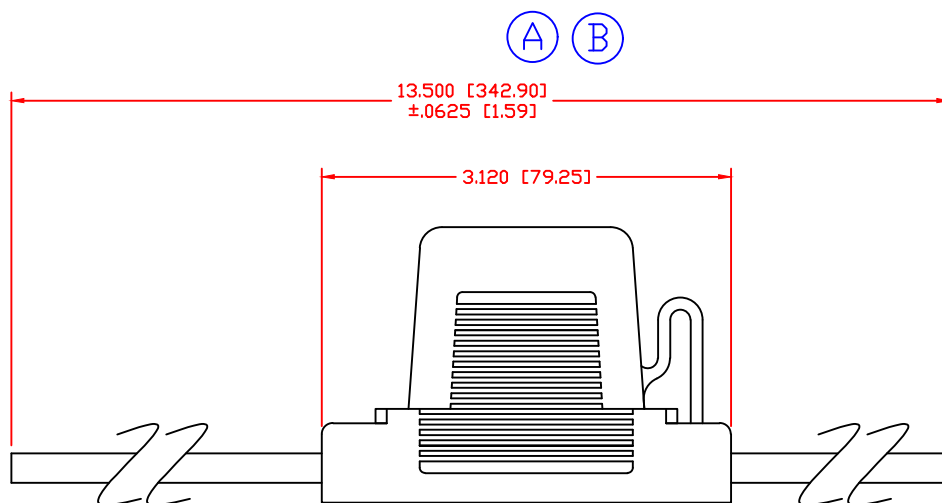
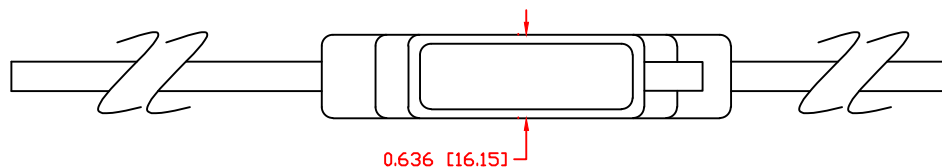


THE INFORMATION CONTAINED IN THIS DRAWING IS THE SOLE PROPERTY OF VTE INCORPORATED. ANY REPRODUCTION IN PART OR WHOLE WITHOUT THE WRITTEN PERMISSION OF VTE INCORPORATED IS PROHIBITED. VTE MAKES NO WARRANTY, EXPRESSED OR IMPLIED, AS TO THE SUITABILITY OF A PRODUCT FOR ANY INTENDED USE. THE CUSTOMER SHALL BEAR THE SOLE RESPONSIBILITY OF DETERMINING THE SUITABILITY OF ANY VTE PRODUCT FOR ITS END USE.


| LTR. | REVISIONS | DATE | INT. |
|------|------------------------------------------------|---------|------|
| A | REVISED REF. DIM TO AGREE WITH PARTS AS MFG'D. | 25JUN10 | BRH |
| B | UPDATED DIMENSION FROM 17.250" TO 13.500" | 18OCT16 | RAS |
| C | CHANGED FROM BARE COPPER TO TIN COATED COPPER | 14JUN17 | RAS |



Wire Leads: 8 Ga.
 (C) " Tin Coated " Stranded Copper
 PVC Insulated, Color Red

NOTE:
 NOT SUITABLE FOR CONTINUOUS
 DUTY OVER 70 AMPS

ALL DIMENSIONS GIVEN AS: in [mm]
 MOLDED PARTS: ±.030" [±0.8mm]
 HARDWARE ITEMS: ±.010" [±0.25mm]

| | | | |
|---------------------------------------------------------------------------------------|-----------------|---------------------------------------------------------------------------------------------------------------------------------------------------------|---------------|
|  | | VTE Incorporated 5437 Robinson Road, P.O. Box 790 Pellston, Michigan 49769 Telephone: 1-800-527-9256, 231-539-8000 FAX: 231-539-0914 | |
| | | REF: CUSTOMER DIMS | DATE: 01OCT09 |
| TITLE: MAXI® FUSEHOLDER 8 Ga. W/ 9" LEADS | | | |
| MATERIAL: | | PART NO. | |
| COLOR: | DRG CLASS REV C | MXH93360809R | |

DO NOT SCALE