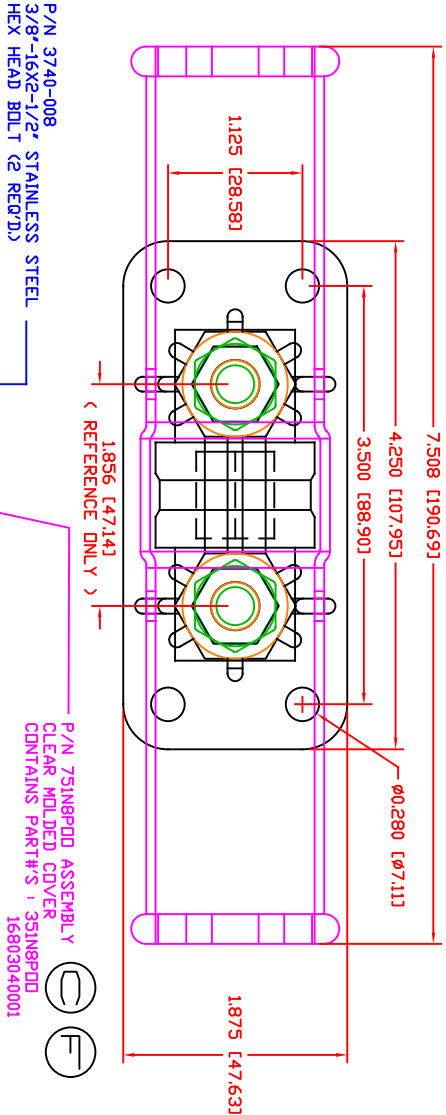
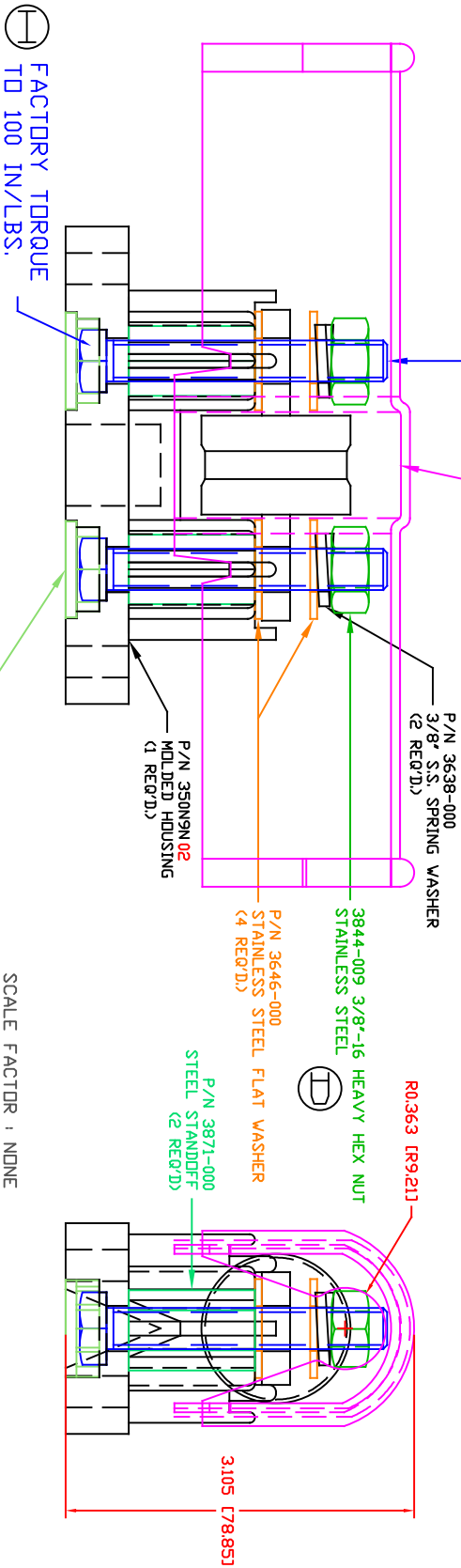


THE INFORMATION CONTAINED IN THIS DRAWING IS THE SOLE PROPERTY OF VTE INCORPORATED. ANY REPRODUCTION IN PART OR WHOLE WITHOUT THE WRITTEN PERMISSION OF VTE INCORPORATED IS PROHIBITED. VTE MAKES NO WARRANTY, EXPRESSED OR IMPLIED, AS TO THE SUITABILITY OF A PRODUCT FOR ANY INTENDED USE. THE CUSTOMER SHALL BEAR THE SOLE RESPONSIBILITY OF DETERMINING THE SUITABILITY OF ANY VTE PRODUCT FOR ITS END USE.



LTR.	REVISIONS	DATE	INT.
3740-006 WAS 3740-001	11-15-05	BRH	
3330 WAS 3290, REA 3740-006, 3740-007, ADDED 3740-008 AND 3844-002	3-08-06	BRH	
351N8P00 WAS 351N8V00	7-30-15	BRH	
REPLACED P/N 3844-002 WITH P/N 3844-009	3-18-16	RAS	
PN 333N0V** CHANGED TO 333N0N**	3-17-17	RAS	
UPDATED COVER INFO	3-17-17	RAS	
ADDED ADDITIONAL INFORMATION FOR PROPER USE	2-16-18	RAS	
ADDED FACTORY TORQUE SPEC 3740-008	7-09-24	RAS	



SCALE FACTOR: 1, NONE
ALL DIMENSIONS GIVEN AS: In [mm]
TOLERANCES UNLESS OTHERWISE SPECIFIED:
MOLDED PARTS: ±0.030" [±0.8mm]
HARDWARE ITEMS: ±0.010" [±0.25mm]



FACTORY TORQUE
TD 100 IN./LBS.

FUSE NOT INCLUDED
SHOWN FOR ILLUSTRATIVE PURPOSES ONLY

MAXIMUM AMPERAGE: 400 AMPS @ 12VDC

MAXIMUM VOLTAGE: 48VDC

MAXIMUM RECOMMENDED FASTENER TORQUE:
STAINLESS HEAVY HEX NUT: 180 IN./LBS. [20.3 Nm]

MATERIAL PART NO:
GLASS FILLED NYLON
HYLON N2015 HL NAT

VENDOR PART NO:
SPECIFIC GRAVITY:
MELTING TEMP:
UL RATING:



VTE Incorporated
5437 Robinson Road, P.O. Box 790
Pellston, Michigan 49769
Telephone: 1-800-527-9256, 231-539-8000
FAX: 231-539-0914

REF:	DATE:	DRN BY:	BRH	WEIGHT:
	6-14-05	CHK'D BY:	BRH	
TITLE:	'T' CLASS FUSEHOLDER ASSY.			SCALE:
MATERIAL:	GLASS FILLED NYLON	PART NO.		
COLOR:	RED	DRG CLASS	REV H	TF B735N8N02