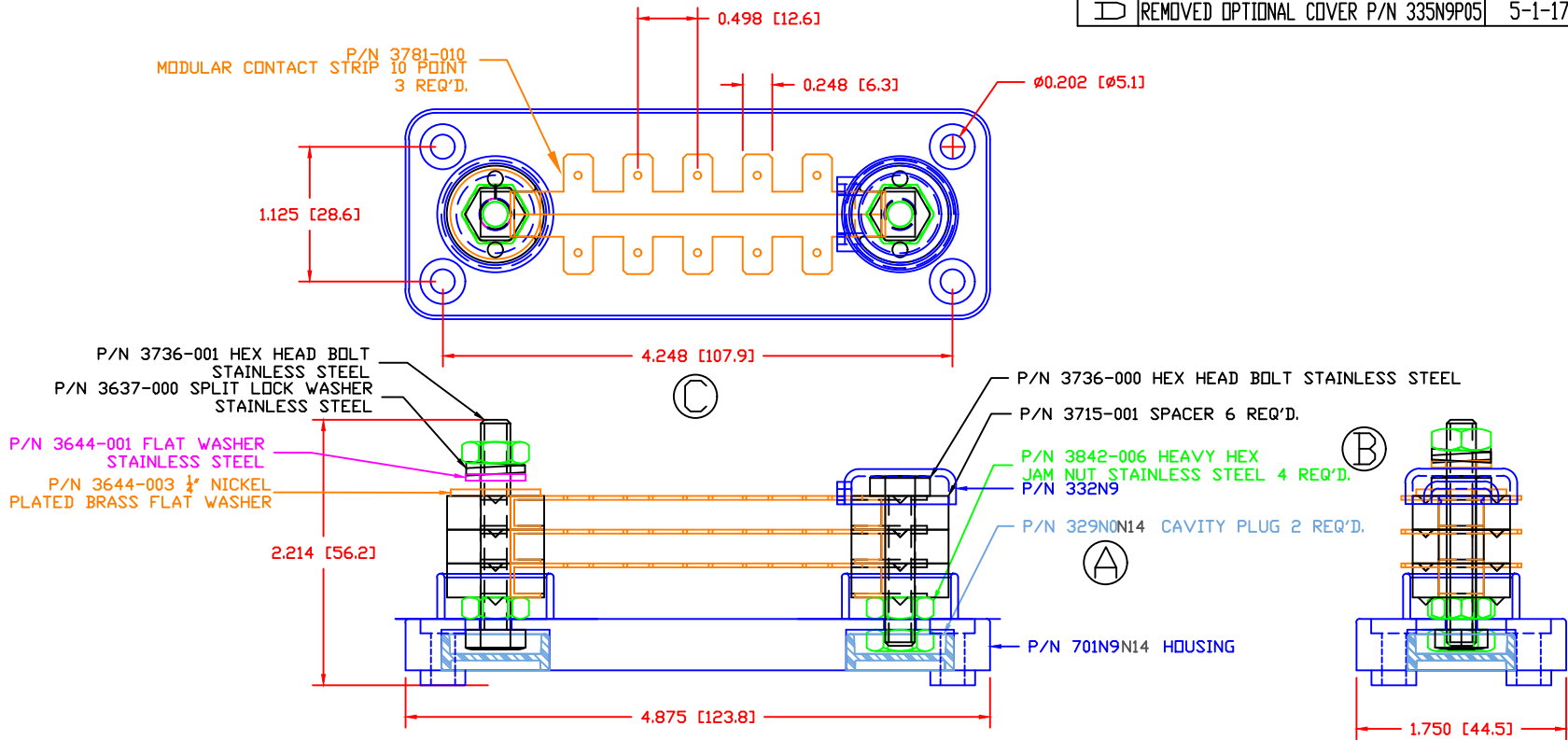


THE INFORMATION CONTAINED IN THIS DRAWING IS THE SOLE PROPERTY OF VTE INCORPORATED. ANY REPRODUCTION IN PART OR WHOLE WITHOUT THE WRITTEN PERMISSION OF VTE INCORPORATED IS PROHIBITED.

LTR.	REVISIONS	DATE	INT
A	PN 329NDV14 CHANGED TO PN 329NDN14	6-23-16	MDL
B	3842-006 WAS 3842-003	03-24-17	JMM
C	4.248 WAS 4.231	03-29-17	JMM
D	REMOVED OPTIONAL COVER P/N 335N9P05	5-1-17	JMM




TOLERANCE UNLESS OTHERWISE SPECIFIED:  
 MOLDED PRODUCTS ONLY: ±0.30"/±0.8mm  
 HARDWARE ITEMS: ±0.010"/±0.25mm  
 RADIAL DIAMETERS TO BE MEASURED OVER MANDRELS,  
 RING GAGES OR PIN GAGES OF SUITABLE SIZE

MATERIAL PART NO:  
 MATERIAL:  
 VENDOR PART NO:  
 SPECIFIC GRAVITY:  
 MELTING TEMP:  
 U.L. RATING:

1111210514UL  
 GLASS FILLED NYLON  
 NYLON N2015 HL BK  
 1.23  
 515 F [268 C]  
 UL 94 HB

MAXIMUM RECOMMENDED FASTENER TORQUE: 72 IN-LBS [8.14 Nm]



**VTE Incorporated**  
 5437 Robinson Road, P.O. Box 790  
 Pellston, Michigan 49769  
 Telephone: 1-800-527-9256, 231-539-8000  
 FAX: 231-539-0914

REF:	DATE:	DRN BY:	BRH	WEIGHT:
CUSTOMER DIMS	5-21-08	CHK'D BY:	BRH	.287LBS [130.12g]
TITLE:			BUSBAR, TAB TYPE 30 POINT	
MATERIAL: GLASS-FILLED NYLON			PART NO.	
COLOR: BLACK	DRG CLASS	REV D	TTB730N14	