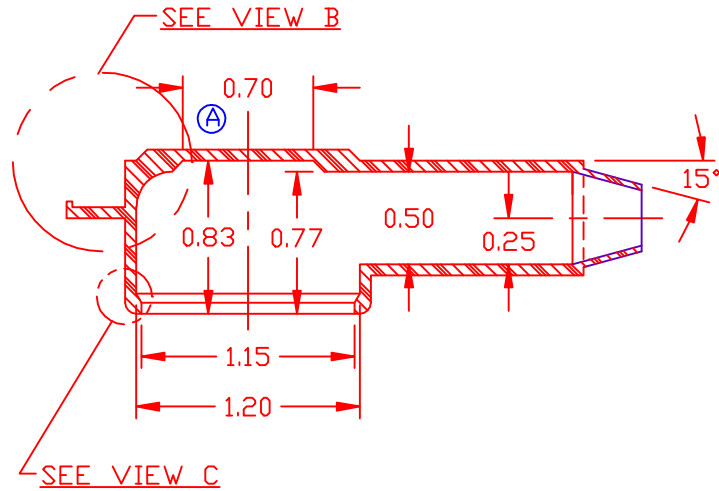
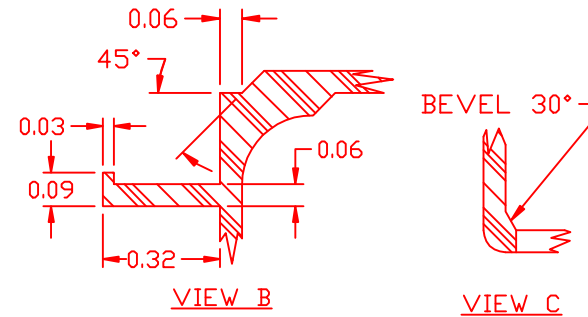
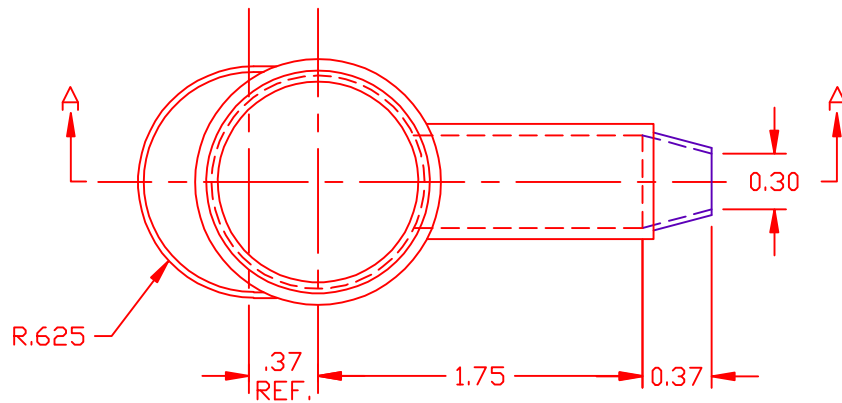
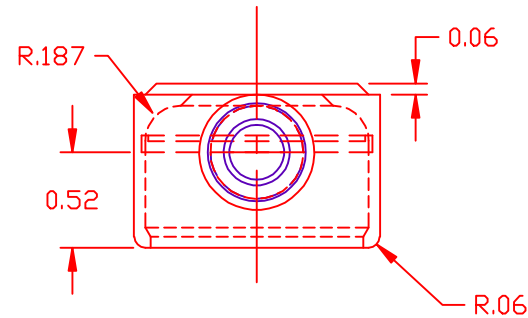


TYPICAL WALL THICKNESS = 0.060 IN. = 1.5 MM SEAL THICKNESS = .03 IN. = .8 MM

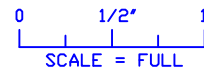
LTR.	REVISIONS	DATE
(A)	MODIFIED TOP & ADDED DIM. .83, .70	03-02-98

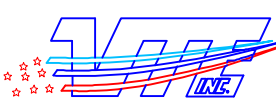


SECTION A-A



Material:	BLACK/RED PVC
Material Part No	*****
Max. Operating Temp:	*****
Durometer: Shore "A"	65
Specific Gravity:	1.35
Ult. Elongation %:	325
Modulus PSI:	450
Tensile Strength PSI:	1500
Dielectric Strength, v./ml	*****
MEETS:	*****





VTE Incorporated
 5437 Robinson Road, P.O. Box 790
 Pellston, Michigan 49769
 Telephone: 1-800-527-9256, 231-539-8000
 FAX: 231-539-0914

REF: *****	DATE: 01-21-98	DRN BY: CJC	WEIGHT: *****
TITLE: EYELET TERMINAL INSULATOR			SCALE: *****
MATERIAL: SEE LIST	PART NO. 125958		
COLOR: *****	DRG CLASS *****		