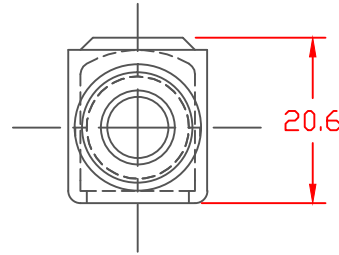
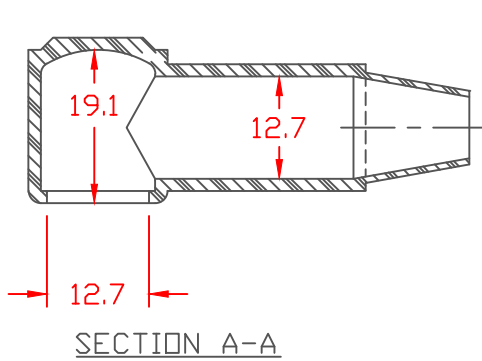


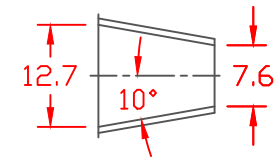
PROPRIETARY RIGHTS ARE CLAIMED FOR THE MATERIAL DISCLOSED IN THIS DRAWING.

LTR.	REVISIONS	DATE
✂	*****	00-00-98

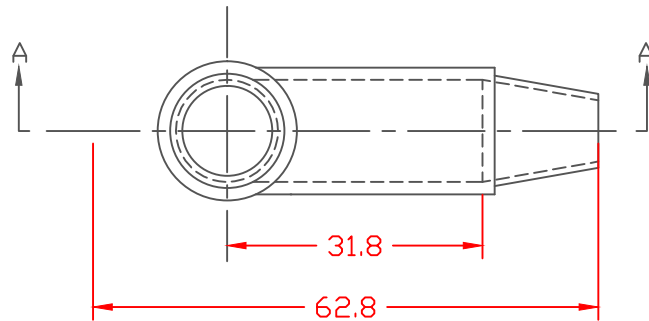
SEAL OPTIONS
SEAL THICKNESS = .8



TYP. WALL THICKNESS = 1.5
SEAL NO. 2 SHOWN




NO. 2
Cable Gages
8 - 2



TOLERANCE UNLESS OTHERWISE SPECIFIED: ±.030"/±.08mm
RADIAL DIAMETERS TO BE MEASURED OVER MANDRELS,
RING GAGES OR PIN GAGES OF SUITABLE SIZE

VTE MATERIAL PART NO.: 1101650102S
MATERIAL: RED PVC
MATERIAL PART NO.: 7809-65-RED 683
MAX. OPERATING TEMP: 135 C
SHORE DUROMETER: "A" 10 SEC. 63/67
SPECIFIC GRAVITY: 1.33
ULT. ELONGATION, %: 450 MIN.
OXYGEN INDEX, %: 22.5
TENSILE STRENGTH PSI: 2000
BRITTLENESS TEMP., DEG. C.: -29
U.L. RATING: 94 V2
TEAR STRENGTH, Ppi: 250



		VTE Incorporated 5437 Robinson Road, P.O. Box 790 Pellston, Michigan 49769 Telephone: 1-800-527-9256, 231-539-8000 FAX: 231-539-0914	
		REF:	DATE: 10-5-93
TITLE: TERMINAL INSULATOR CAP W/O TAB		CHK'D BY:	
MATERIAL:		PART NO. 214E2S02X1	
COLOR:	DRG CLASS		