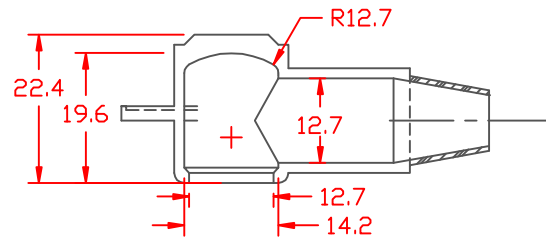


LTR.	REVISIONS	DATE
A	SEAL THICKNESS	02-16-98
B	TAB MODIFIED	10-09-00

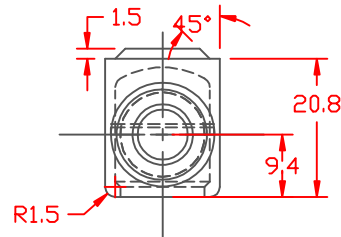
PROPRIETARY RIGHTS ARE CLAIMED FOR THE MATERIAL DISCLOSED IN THIS DRAWING.



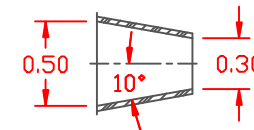
SECTION A-A

TYP. WALL THICKNESS = 1.5

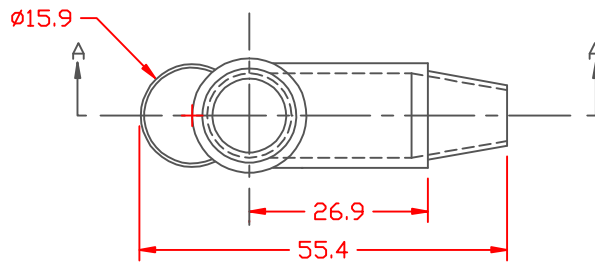
SEAL NO. 2 SHOWN



SEAL OPTIONS
SEAL THICKNESS = 1.2 mm

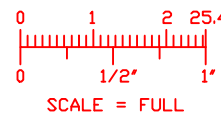



NO. 2
Cable Gages
8 - 2



Material:
Material Part No:
Max. Operating Temp:
Shore Durometer
Specific Gravity:
Ult. Elongation %:
Brittle Temp:
Tensile Strength PSI:
Dielectric Strength, v./ml
U.L. Rating:
MEETS:

RED PVC
9812-65-RED683
105 C
"A" 10 SEC. 67/62
1.34
475
-44 C
1547 PSI
540
94 V2
FMVSS.302



		VTE Incorporated 5437 Robinson Road, P.O. Box 790 Pellston, Michigan 49769 Telephone: 1-800-527-9256, 231-539-8000 FAX: 231-539-0914	
		REF:	DATE: 10-5-93
TITLE: TERMINAL INSULATOR CAP			
MATERIAL: SEE LIST		PART NO. 214N2V02	
COLOR:	DRG CLASS C		