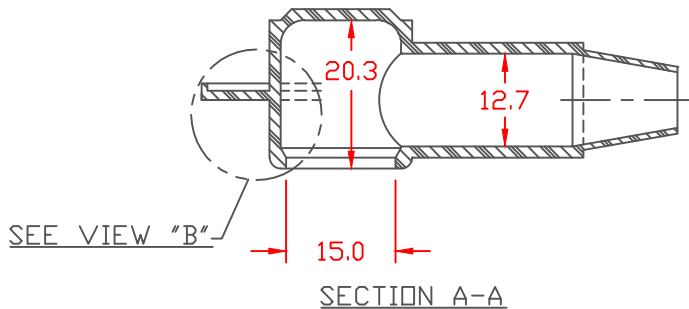


PROPRIETARY RIGHTS ARE CLAIMED FOR THE MATERIAL DISCLOSED IN THIS DRAWING.

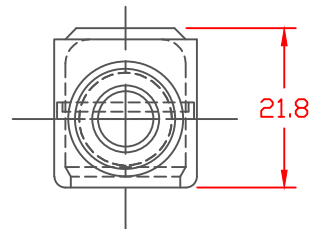
LTR.	REVISIONS	DATE	INT.
△	62.5 WAS 65.2	29MAY07	BRH
Ⓑ	UPDATED DIMENSION REFERENCE	02-16-16	RAS

SEAL OPTIONS

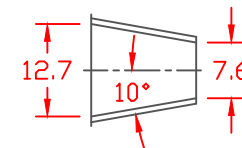
SEAL THICKNESS = .8



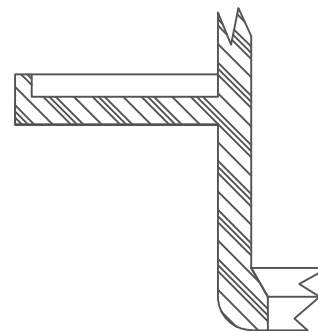
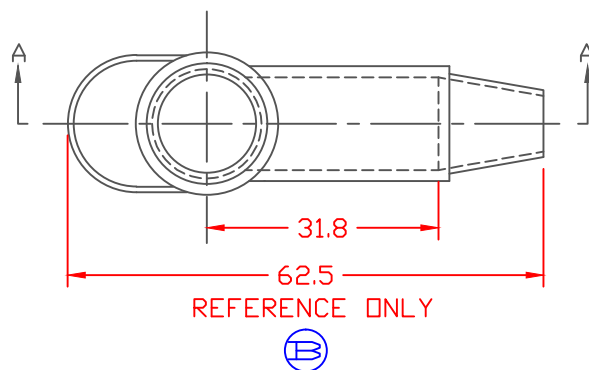
TYP. WALL THICKNESS = 1.5
SEAL NO. 2 SHOWN



NO. 1
Wire Gages
18 - 10



NO. 2
Cable Gages
8 - 2



VIEW "B"
SCALE: 3" = 1"
TOLERANCE UNLESS OTHERWISE SPECIFIED: ±.030"/±0.8mm
RADIAL DIAMETERS TO BE MEASURED OVER MANDRELS,
RING GAGES OR PIN GAGES OF SUITABLE SIZE

Material:
Material Part No

Thermoplastic Elastomer
(Santoprene 201-64 or Equivalent)
Durometer 67 to 73 Shore A

VTE Incorporated
5437 Robinson Road, P.O. Box 790
Pellston, Michigan 49769
Telephone: 1-800-527-9256, 231-539-8000
FAX: 231-539-0914

REF:	DATE: 10-5-93	DRN BY: JC CHK'D BY:	WEIGHT: .012 LBS. / 5.49 G.
------	------------------	-------------------------	--------------------------------

TITLE: TERMINAL INSULATOR CAP

MATERIAL:	PART NO. 216E2 T02
COLOR: RED DRG CLASS	

