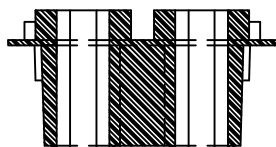
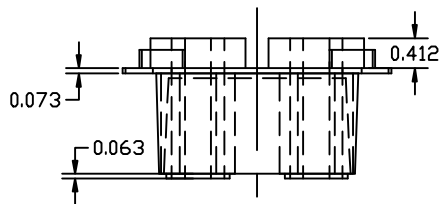


THE INFORMATION CONTAINED IN THIS DRAWING IS THE SOLE PROPERTY OF VTE INCORPORATED. ANY REPRODUCTION IN PART OR WHOLE WITHOUT THE WRITTEN PERMISSION OF VTE INCORPORATED IS PROHIBITED.

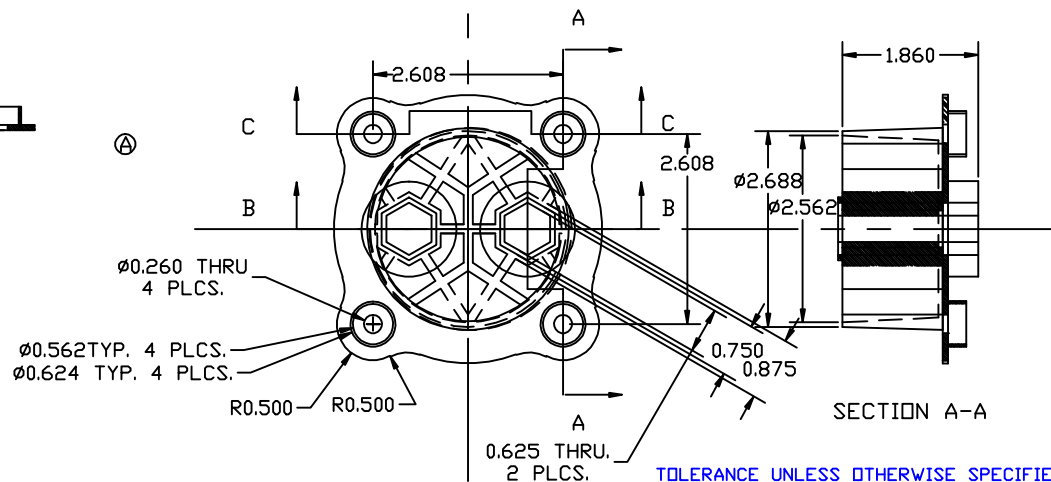
|      |                             |         |
|------|-----------------------------|---------|
| LTR. | REVISIONS                   | DATE    |
| ⌒    | 2 DEG. DRAFT ADDED, 4 PLCS. | 29DEC05 |



SECTION B-B



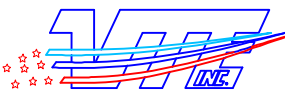
SECTION C-C



TOLERANCE UNLESS OTHERWISE SPECIFIED: ±0.30\*/±0.8mm  
 RADIAL DIAMETERS TO BE MEASURED OVER MANDRELS,  
 RING GAGES OR PIN GAGES OF SUITABLE SIZE

Material:  
 Material Part No  
 Max. Operating Temp:  
 Durometer:  
 Specific Gravity:  
 Ult. Elongation %:  
 Modulus PSI:  
 Tensile Strength PSI:  
 Dielectric Strength, v./ml  
 MEETS:

Polypropylene  
 Polypropylene Copolymer  
 550 F  
 110 R-Scale  
 1.13  
 2.5  
 Not Tested  
 9500  
 Not Tested  
 UL94HB

|   |                 |   |               |
|---|-----------------|---|---------------|
|  |                 | <b>VTE Incorporated</b><br>5437 Robinson Road, P.O. Box 790<br>Pellston, Michigan 49769<br>Telephone: 1-800-527-9256, 231-539-8000<br>FAX: 231-539-0914 |               |
|   |                 | REF: ***  | DATE: 23DEC05 |
| TITLE: DUAL POST BULKHEAD CONNECTOR FACE PLATE  |                 |   | SCALE:        |
| MATERIAL:   |                 | PART NO.  |               |
| COLOR: ****   | DRG CLASS: **** | 368D9 P14   |               |