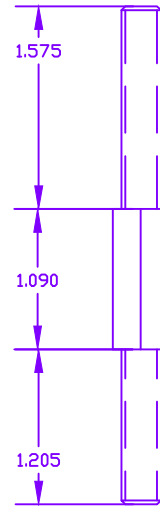
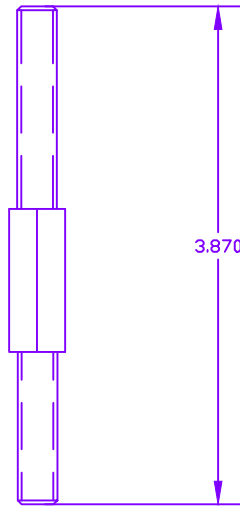
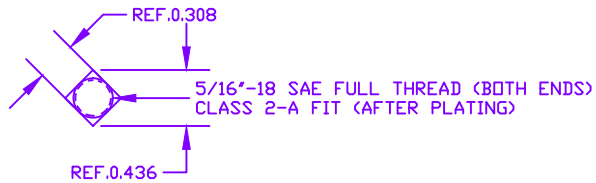


THE INFORMATION CONTAINED IN THIS DRAWING IS THE SOLE PROPERTY OF VTE INCORPORATED. ANY REPRODUCTION IN PART OR WHOLE WITHOUT THE WRITTEN PERMISSION OF VTE INCORPORATED IS PROHIBITED.

LTR.	REVISIONS	DATE
≠	*****	00-00-98

BRASS ALLOY 270/360
 ROCKWELL HARDNESS B55 MINIMUM
 TENSILE STRENGTH 55,000 PSI MINIMUM
 PARTS MUST BE CLEAN AND OIL FREE
 PARTS TO BE FULLY THREADED
 TO WITHIN .090" (2.3MM) OF SQUARE
 BOTH ENDS



TOLERANCE UNLESS OTHERWISE SPECIFIED:
 HARDWARE ITEMS: ±.010"/±0.25mm
 RADIAL DIAMETERS TO BE MEASURED OVER MANDRELS,
 RING GAGES OR PIN GAGES OF SUITABLE SIZE

VTE Incorporated
 5437 Robinson Road, P.O. Box 790
 Pellston, Michigan 49769
 Telephone: 1-800-527-9256, 231-539-8000
 FAX: 231-539-0914

REF: *****	DATE: 03OCT05	DRN BY: BRH	WEIGHT: *****
TITLE: DOUBLE END 5/16"-18 STUD			SCALE:
MATERIAL:		PART NO.	
COLOR: *****	DRG CLASS *****	3734-001	