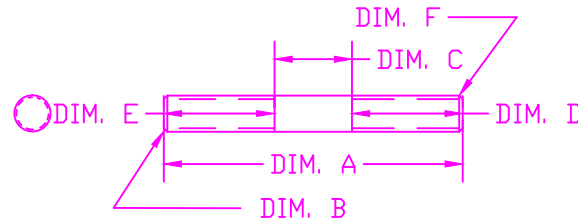


THE INFORMATION CONTAINED IN THIS DRAWING IS THE SOLE PROPERTY OF VTE INCORPORATED. ANY REPRODUCTION IN PART OR WHOLE WITHOUT THE WRITTEN PERMISSION OF VTE INCORPORATED IS PROHIBITED.

LTR.	REVISIONS	DATE
≡	*****	*****

DO NOT SCALE


P/N 3742-***
STUD, DOUBLE ENDED



ITEM #	DIM. A	DIM. B	DIM. C	DIM. D	DIM. E	DIM. F	CUSTOMER	WHERE USED
3742	-000	2.600"	3/8"-16	.350	1.125	1.125	3/8"-16	VTE STANDARD PRODUCT SMALL BASE PASS THRU POWER POST ASSEMBLY
	-001	FINISH COST						
	-002	VTE STANDARD PRODUCT LESS FINISH						

NICKEL PLATED
BRASS ALLOY 270/360
ROCKWELL HARDNESS B55 MINIMUM
TENSILE STRENGTH 55,000 PSI MINIMUM
PARTS MUST BE CLEAN AND OIL FREE

TOLERANCE UNLESS OTHERWISE SPECIFIED:
HARDWARE ITEMS: ±.010"/±0.25mm
RADIAL DIAMETERS TO BE MEASURED OVER MANDRELS,
RING GAGES OR PIN GAGES OF SUITABLE SIZE
ALL THREADS ARE CLASS 2 FIT UNLESS OTHERWISE NOTED

		VTE Incorporated 5437 Robinson Road, P.O. Box 790 Pellston, Michigan 49769 Telephone: 1-800-527-9256, 231-539-8000 FAX: 231-539-0914	
		REF: *****	DATE: 15FEB07
TITLE: STUD, DOUBLE ENDED			SCALE:
MATERIAL:		PART NO.	
COLOR: *****	DRG CLASS *****	3742 CHARTED	