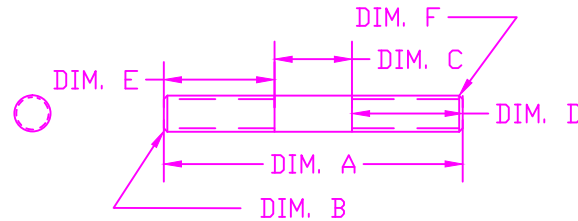


THE INFORMATION CONTAINED IN THIS DRAWING IS THE SOLE PROPERTY OF VTE INCORPORATED. ANY REPRODUCTION IN PART OR WHOLE WITHOUT THE WRITTEN PERMISSION OF VTE INCORPORATED IS PROHIBITED.

LTR.	REVISIONS	DATE
≡	*****	*****


DO NOT SCALE

P/N 3744-\*\*\*  
STUD, DOUBLE ENDED  
5/16"



ITEM #	DIM. A	DIM. B	DIM. C	DIM. D	DIM. E	DIM. F	CUSTOMER	WHERE USED
3744	2.600"	5/16"-18	.405	1.100	1.100	5/16"-18	VTE STANDARD PRODUCT	SMALL BASE PASS THRU POWER POST ASSEMBLY
-000	STANDARD PART: BASE MATERIAL 270/360 BRASS / NICKEL PLATED							
-001	FINISH COST NICKEL PLATE ONLY							
-002	VTE STANDARD PRODUCT LESS FINISH BASE MATERIAL 270/360 BRASS							
-003	SAME AS 3744-000 EXCEPT BASE MATERIAL TO BE MILD STEEL COPPER/NICKEL PLATED							
-004	SAME AS 3744-002 EXCEPT BASE MATERIAL TO BE MILD STEEL							
-005	FINISH COST COPPER/NICKEL PLATING ONLY							

TOLERANCE UNLESS OTHERWISE SPECIFIED:  
HARDWARE ITEMS: ±.010"/±0.25mm  
RADIAL DIAMETERS TO BE MEASURED OVER MANDRELS,  
RING GAGES OR PIN GAGES OF SUITABLE SIZE  
ALL THREADS ARE CLASS 2 FIT UNLESS OTHERWISE NOTED



**VTE Incorporated**  
5437 Robinson Road, P.O. Box 790  
Pellston, Michigan 49769  
Telephone: 1-800-527-9256, 231-539-8000  
FAX: 231-539-0914

REF: *****	DATE: 16OCT07	DRN BY: BRH	WEIGHT: *****
CHK'D BY: BRH			SCALE:
TITLE: STUD, DOUBLE ENDED 5/16"			
MATERIAL:		PART NO.	
COLOR: *****	DRG CLASS *****	<b>3744-CHARTED</b>	