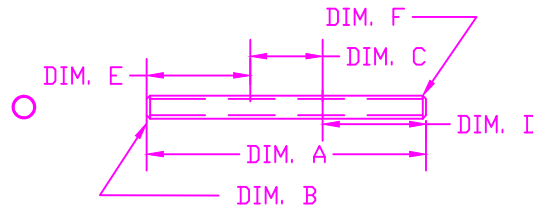


THE INFORMATION CONTAINED IN THIS DRAWING IS THE SOLE PROPERTY OF VTE INCORPORATED. ANY REPRODUCTION IN PART OR WHOLE WITHOUT THE WRITTEN PERMISSION OF VTE INCORPORATED IS PROHIBITED.

LTR.	REVISIONS	DATE
≡	*****	*****


DO NOT SCALE

P/N 3745-\*\*\*  
STUD, DOUBLE ENDED  
1/4"



3745	ITEM #	DIM. A	DIM. B	DIM. C	DIM. D	DIM. E	DIM. F	CUSTOMER	WHERE USED	MATERIAL
	-000	3.00"	1/4"-20	N/A	N/A	N/A	N/A	VTE STANDARD PRODUCT	SMALL BASE PASS THRU POWER POST ASSEMBLY	PLAIN BRASS (TYPE 270/360)
	-001	2.75"	1/4"-20	N/A	N/A	N/A	N/A	VTE STANDARD PRODUCT	SMALL BASE PASS THRU POWER POST ASSEMBLY	ZINC PLATED MILD STEEL
	-002									
	-003									
	-004									
	-005									

TOLERANCE UNLESS OTHERWISE SPECIFIED:  
 HARDWARE ITEMS: ±.010"/±0.25mm  
 RADIAL DIAMETERS TO BE MEASURED OVER MANDRELS,  
 RING GAGES OR PIN GAGES OF SUITABLE SIZE  
 ALL THREADS ARE CLASS 2 FIT UNLESS OTHERWISE NOTED

		<b>VTE Incorporated</b> 5437 Robinson Road, P.O. Box 790 Pellston, Michigan 49769 Telephone: 1-800-527-9256, 231-539-8000 FAX: 231-539-0914	
		REF: *****	DATE: 20JUL11
TITLE: STUD, DOUBLE ENDED 1/4"			SCALE:
MATERIAL:		PART NO.	
COLOR: *****	DRG CLASS *****	3745-***	