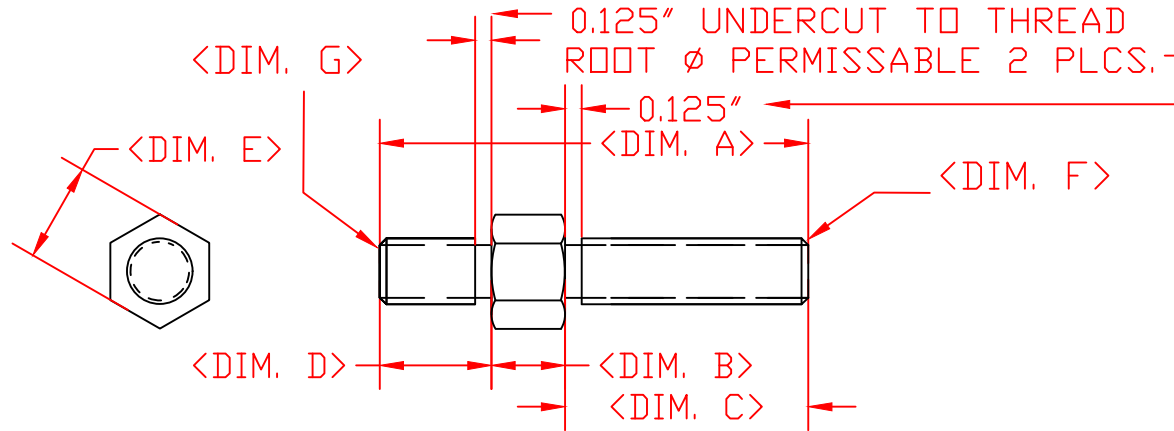


THE INFORMATION CONTAINED IN THIS DRAWING IS THE SOLE PROPERTY OF VTE INCORPORATED. ANY REPRODUCTION IN PART OR WHOLE WITHOUT THE WRITTEN PERMISSION OF VTE INCORPORATED IS PROHIBITED.

LTR.	REVISIONS	DATE	INT.
A	TABULATED DRAWING	25APR03	BRH
B	METRIC ITEM (3753-002) ADDED	04AUG03	BRH
C	ADDED -000 SUFFIX	17MAR06	BRH
D	ADDED UNDERCUT PERMISSABLE NOTE	04SEP07	BRH
E	UPDATED MATERIAL TYPE FROM 270/360	24FEB16	RAS



	ITEM #	DIM. A	DIM. B	DIM. C	DIM. D	DIM. E	DIM. F	DIM. G	CUSTOMER
3753	-000	3.250"	.559"	1.844"	.848"	.750"	1/2"-13	1/2"-13	VTE STANDARD PRODUCT
	-001	3.153"	.559"	1.844"	.750"	.750"	1/2"-13	1/2"-13	PANELTRONICS
	-002	82.55MM	14.2MM	46.84MM	21.54MM	19.05MM	M12X1.75	M12X1.75	METRIC VERSION
	-003	3.750"	.559"	2.344"	.848"	.750"	1/2"-13	1/2"-13	SPECIAL QUOTE ONLY VERSION
	-004	2.865"	.559"	1.458"	.848"	.750"	1/2"-13	1/2"-13	SPECIAL SURE-POWER VERSION

TOLERANCE UNLESS OTHERWISE SPECIFIED:
 HARDWARE ITEMS: ±.010"/±0.25mm
 RADIAL DIAMETERS TO BE MEASURED OVER MANDRELS,
 RING GAGES OR PIN GAGES OF SUITABLE SIZE



BRASS ALLOY 360
 ROCKWELL HARDNESS B55 MINIMUM
 TENSILE STRENGTH 55,000 PSI MINIMUM
 PARTS MUST BE CLEAN AND OIL FREE



VTE Incorporated
 5437 Robinson Road, P.O. Box 790
 Pellston, Michigan 49769
 Telephone: 1-800-527-9256, 231-539-8000
 FAX: 231-539-0914

REF:	DATE: 29APR03	DRN BY: BRH CHK'D BY: BRH	WEIGHT:
TITLE: BRASS THREADED SHAFT			SCALE:
MATERIAL:		PART NO. 3753-CHARTED	
COLOR:	DRG CLASS		