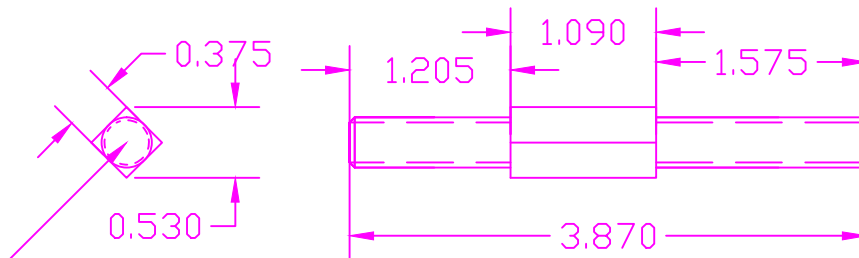


THE INFORMATION CONTAINED IN THIS DRAWING IS THE SOLE PROPERTY OF VTE INCORPORATED. ANY REPRODUCTION IN PART OR WHOLE WITHOUT THE WRITTEN PERMISSION OF VTE INCORPORATED IS PROHIBITED.

LTR.	REVISIONS	DATE
A	TABULATED DRAWING	25APR03
B	METRIC ITEM (3753-002) ADDED	04AUG03


MATERIAL: ZINC PLATED MILD STEEL
 PARTS MUST BE CLEAN AND OIL-FREE
 PARTS TO BE FULLY THREADED WITHIN
 .090" (2.3mm) OF SQUARE BOTH ENDS.



3/8"-16 SAE FULL THREAD (BOTH ENDS)
 CLASS 2 FIT AFTER PLATING

DO NOT SCALE

TOLERANCE UNLESS OTHERWISE SPECIFIED:
 HARDWARE ITEMS: ±.010"/±0.25mm
 RADIAL DIAMETERS TO BE MEASURED OVER MANDRELS,
 RING GAGES OR PIN GAGES OF SUITABLE SIZE

		VTE Incorporated 5437 Robinson Road, P.O. Box 790 Pellston, Michigan 49769 Telephone: 1-800-527-9256, 231-539-8000 FAX: 231-539-0914	
		REF: *****	DATE: 08FEB07
TITLE: DOUBLE END 3/8"-16 STUD			SCALE:
MATERIAL:		PART NO.	
COLOR: *****	DRG CLASS *****	3754-000	