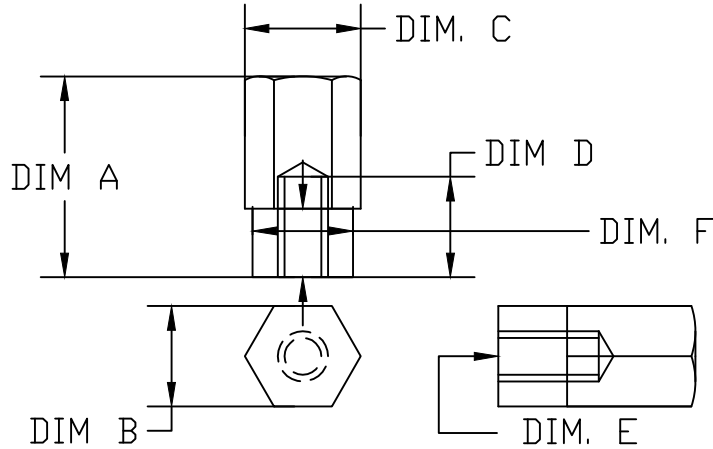


THE INFORMATION CONTAINED IN THIS DRAWING IS THE SOLE PROPERTY OF VTE INCORPORATED. ANY REPRODUCTION IN PART OR WHOLE WITHOUT THE WRITTEN PERMISSION OF VTE INCORPORATED IS PROHIBITED.


LTR.	REVISIONS	DATE
A	ADDED -004 SUFFIX	06JUN06
B	DEFINED DIMENSION F	21FE07
C	VTE STANDARD PRODUCT WAS REGAL MARINE	04SEP08
D	ADDED ITEM -005	20AUG09
E	ADDED ITEM -006	26AUG09
F	DIM. C WAS .513"	10NOV10
G	DIM. C WAS .513"	10NOV10



	ITEM #	DIM. A	DIM. B	DIM. C	DIM. D	DIM. E	DIM. F	CUSTOMER
3860	-000	1.030"	.750"	.862"	.750"	3/8"-16	N/A	VTE STANDARD PRODUCT
	-001	.663"	.500"	.577"	.440"	3/8"-16	N/A	VTE STANDARD PRODUCT
	-002	1.030"	.750"	.862"	.750"	1/2"-13	N/A	MARSH ELECTRONICS
	-003	1.500"	.750"	.862"	.750"	M8X1.25	ø.750" X .500"	CUMMINS MFG.
	-004	1.030"	.750"	.862"	.750"	5/16"-18	N/A	VTE STANDARD PRODUCT
	-005	1.030"	.750"	.862"	.750"	3/8"-16	N/A	SAME AS -000 EXCEPT: COPPER PLATED MILD STEEL
	-006	1.250"	.625"	.712"	1.100"	3/8"-16	N/A	VTE STANDARD PRODUCT
	-007	1.250"	.500"	.577"	.440"	5/16"-18	N/A	PRELIMINARY DRAWING

TOLERANCE UNLESS OTHERWISE SPECIFIED:  
 HARDWARE ITEMS: ±.010"/±0.25mm  
 RADIAL DIAMETERS TO BE MEASURED OVER MANDRELS,  
 RING GAGES OR PIN GAGES OF SUITABLE SIZE

MATERIAL: 360 BRASS ALLOY  
 EXCEPT ITEM #-005



**VTE Incorporated**  
 5437 Robinson Road, P.O. Box 790  
 Pellston, Michigan 49769  
 Telephone: 1-800-527-9256, 231-539-8000  
 FAX: 231-539-0914

REF: *****	DATE: 29APR03	DRN BY: BRH	WEIGHT: *****
TITLE: BRASS CAP NUTS CHARTED			SCALE:
MATERIAL:		PART NO.	
COLOR: *****	DRG CLASS *****	3860 CHARTED	