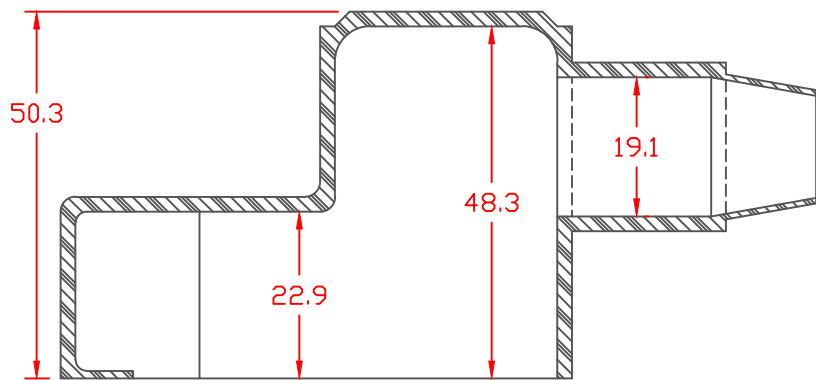


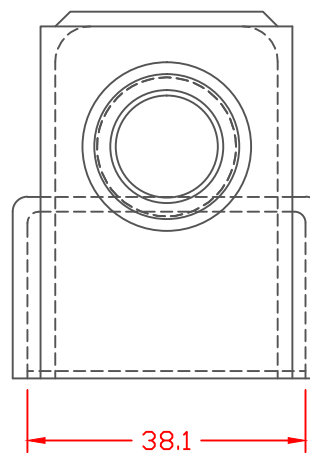
PROPRIETARY RIGHTS ARE CLAIMED FOR THE MATERIAL DISCLOSED IN THIS DRAWING.

TYP. WALL THICKNESS = 2.0 TYP. RADIUS = 2.0

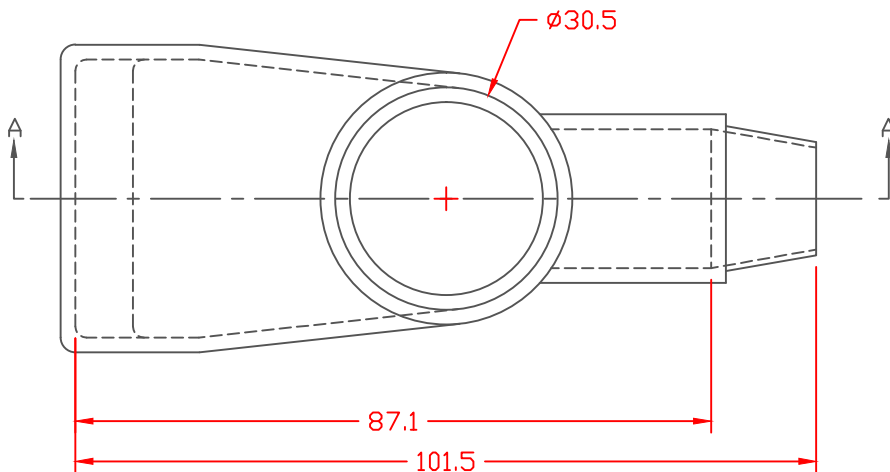
LTR.	REVISIONS	DATE
≡	*****	00-00-98



SECTION A-A



SEAL NO. 3 SHOWN

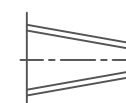


VTE Material Part No:
Material:
Material Part No
Max. Operating Temp:
Shore Durometer
Specific Gravity:
Ult. Elongation %:
Tensile Strength PSI:
U.L. Rating:

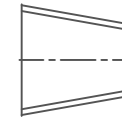
1101700114
BLACK PVC
M1170-FR or Equivalent
105 C
"A" 15 SEC. 70+/-5
1.34
275 Minimum
1600 PSI Minimum
94 V0

SEAL OPTIONS

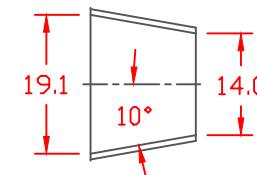
SEAL THICKNESS = .8



NO. 1
Cable Gages
10 - 6

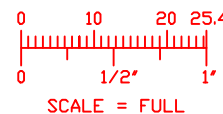



NO. 2
Cable Gages
6 - 1/0



NO. 3
Cable Gages
1/0 - 4/0

TOLERANCE UNLESS OTHERWISE SPECIFIED: ± 0.30 / ± 0.8 mm
RADIAL DIAMETERS TO BE MEASURED OVER MANDRELS,
RING GAGES OR PIN GAGES OF SUITABLE SIZE



		VTE Incorporated 5437 Robinson Road, P.O. Box 790 Pellston, Michigan 49769 Telephone: 1-800-527-9256, 231539-8000 FAX: 231-539-0914	
		REF:	DATE: 3-31-98
TITLE: MARINE ADAPTER WING NUT BOOT			
MATERIAL:		PART NO. 457N3F14	
COLOR:	DRG CLASS		