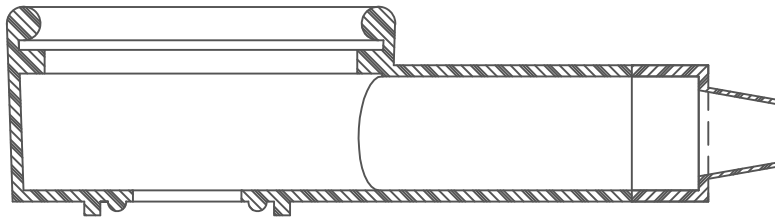
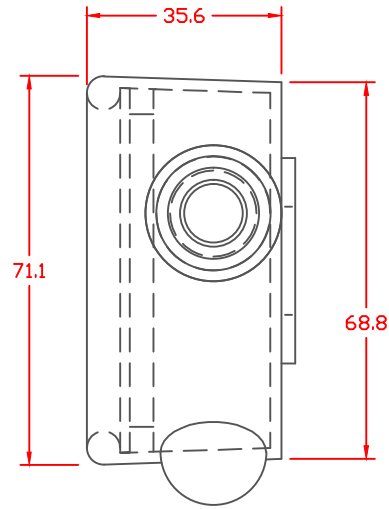
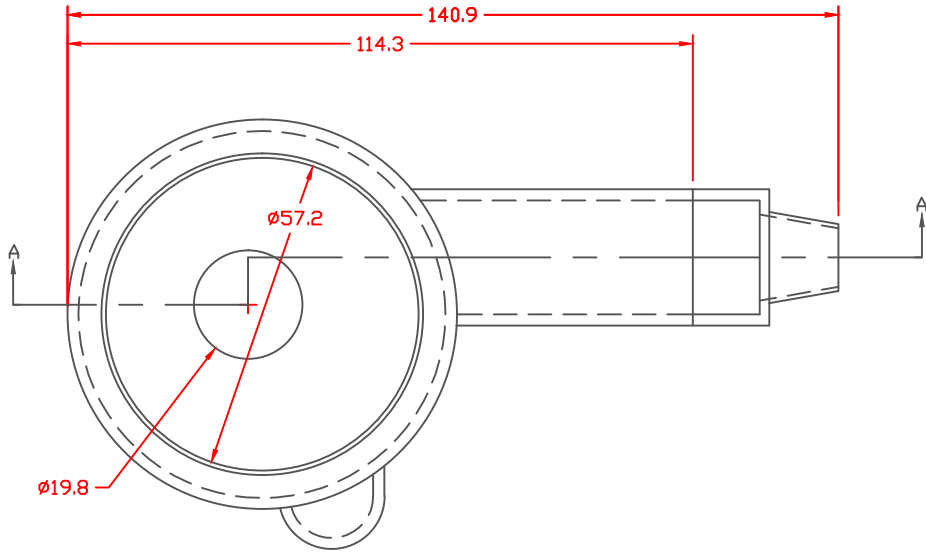


PROPRIETARY RIGHTS ARE CLAIMED FOR THE MATERIAL DISCLOSED IN THIS DRAWING.

LTR.	REVISIONS	DATE
≠	*****	00-00-98



SECTION A-A

TYP. WALL THICKNESS = 2.0  
TYP. RADIUS = 2.0

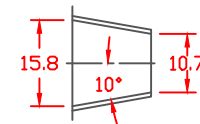
Material:  
Material Part No  
Max. Operating Temp:  
Durometer: Shore "A"  
Specific Gravity:  
Ult. Elongation %:  
Brittle Temp:  
Modulus PSI:  
Tensile Strength PSI:

YELLOW SYLVIN  
9067-95 YELLOW 405  
60 C  
94  
1.49  
259  
-19 C  
\*\*\*\*\*  
2296 PSI

MEETS:


\*\*\*\*\*

SEAL  
SEAL THICKNESS = .8



Cable Gages

TOLERANCE UNLESS OTHERWISE SPECIFIED:  $\pm .030$  /  $\pm 0.8$ mm  
RADIAL DIAMETERS TO BE MEASURED OVER MANDRELS,  
RING GAGES OR PIN GAGES OF SUITABLE SIZE

		<b>VTE Incorporated</b> 5437 Robinson Road, P.O. Box 790 Pellston, Michigan 49769 Telephone: 1-800-527-9256, 231-539-8000 FAX: 231-539-0914	
		REF:	DATE:
	3-20-98	CHK'D BY:	11 LBS. / 49.9 G.
TITLE: 8D BATTERY TERMINAL PROTECTOR			SCALE: 3/4" = 1"
MATERIAL:		PART NO.	
COLOR:		476N7V05	
DRG CLASS			



SCALE = FULL