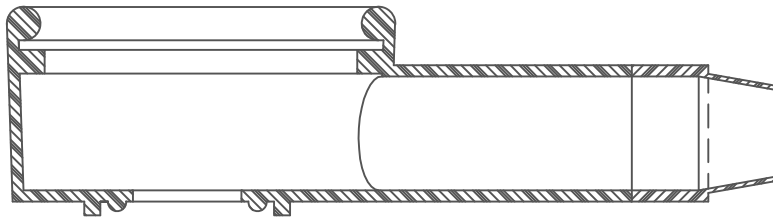
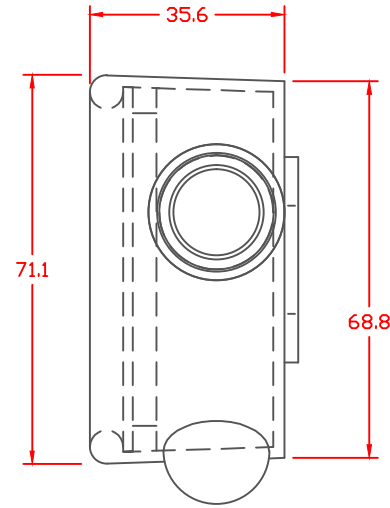
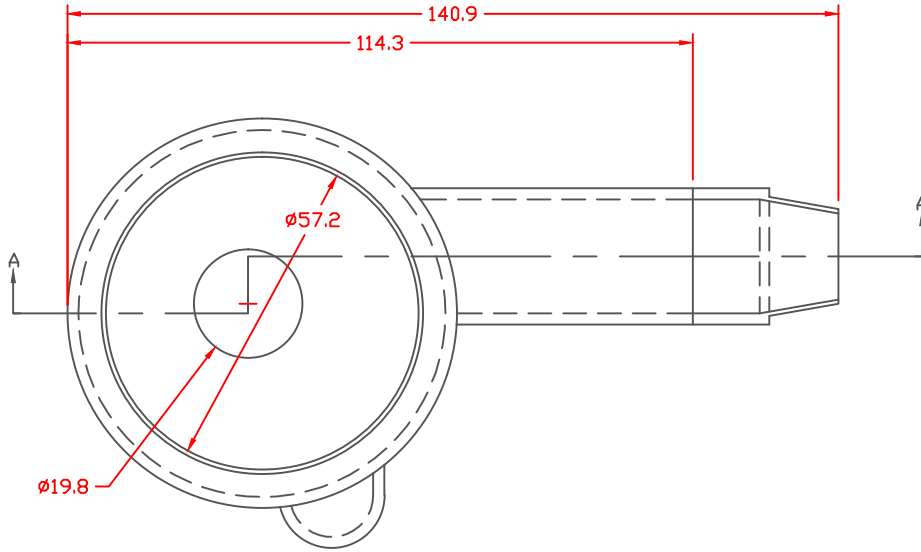


PROPRIETARY RIGHTS ARE CLAIMED FOR THE MATERIAL DISCLOSED IN THIS DRAWING.

LTR.	REVISIONS	DATE
≠	*****	00-00-98



SECTION A-A

TYP. WALL THICKNESS = 2.0
TYP. RADIUS = 2.0

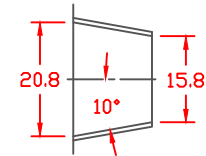
Material:
Material Part No
Max. Operating Temp:
Durometer: Shore "A"
Specific Gravity:
Ult. Elongation %:
Brittle Temp:
Modulus PSI:
Tensile Strength PSI:

YELLOW SYLVIN
9067-95 YELLOW 405
60 C
94
1.49
259
-19 C

2296 PSI

MEETS:

SEAL
SEAL THICKNESS = .8



TOLERANCE UNLESS OTHERWISE SPECIFIED: ±.030" / ±0.8mm
RADIAL DIAMETERS TO BE MEASURED OVER MANDRELS,
RING GAGES OR PIN GAGES OF SUITABLE SIZE

MEETS:



VTE Incorporated
5437 Robinson Road, P.O. Box 790
Pellston, Michigan 49769
Telephone: 1-800-527-9256, 231-539-8000
FAX: 231-539-0914

REF:	DATE: 3-20-98	DRN BY: JC CHK'D BY:	WEIGHT: .11 LBS. / 49.9 G.
TITLE: 8D BATTERY TERMINAL PROTECTOR			SCALE: 3/4" = 1"
MATERIAL:		PART NO. 476N8V05	
COLOR:	DRG CLASS		