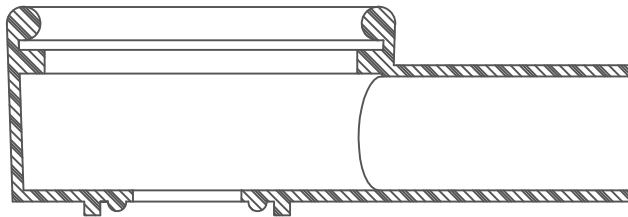
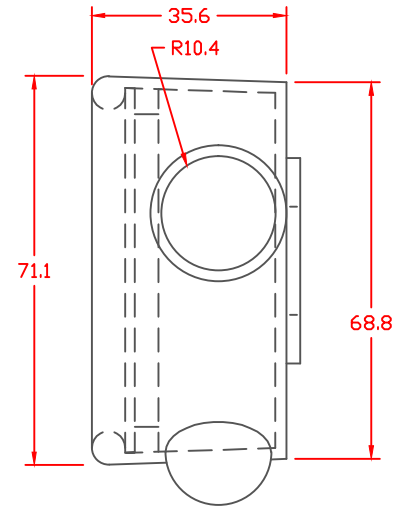
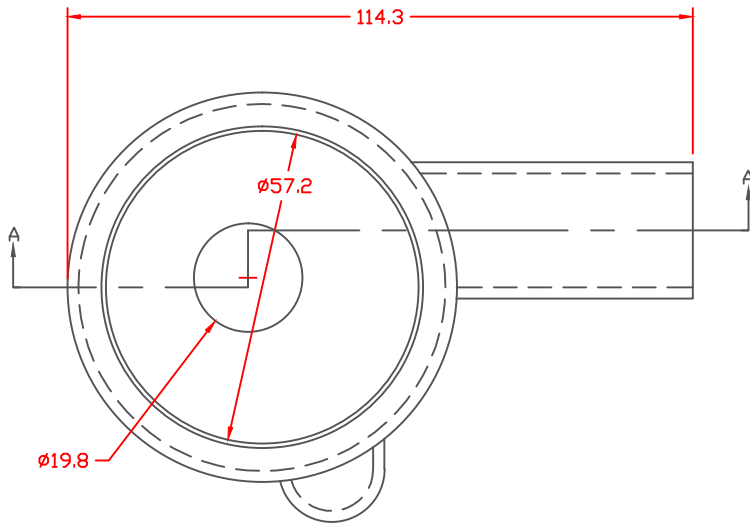


PROPRIETARY RIGHTS ARE CLAIMED FOR THE MATERIAL DISCLOSED IN THIS DRAWING.

LTR.	REVISIONS	DATE
≠	*****	00-00-98



SECTION A-A

TYP. WALL THICKNESS = 2.0
TYP. RADIUS = 2.0

Material: YELLOW SYLVIN
 Material Part No: 9067-95 YELLOW 405
 Max. Operating Temp: 60 C
 Durometer: Shore "A" 94
 Specific Gravity: 1.49
 Ult. Elongation %: 259
 Brittle Temp: -19 C
 Modulus PSI: *****
 Tensile Strength PSI: 2296 PSI

MEETS: *****

TOLERANCE UNLESS OTHERWISE SPECIFIED: ±.030"/±0.8mm
 RADIAL DIAMETERS TO BE MEASURED OVER MANDRELS,
 RING GAGES OR PIN GAGES OF SUITABLE SIZE

VTE Incorporated
 5437 Robinson Road, P.O. Box 790
 Pellston, Michigan 49769
 Telephone: 1-800-527-9256, 231-539-8000
 FAX: 231-539-0914

REF:	DATE: 3-20-98	DRN BY: JC	WEIGHT: .11 LBS. / 49.9 G.
TITLE: 8D BATTERY TERMINAL PROTECTOR			SCALE: 3/4" = 1"
MATERIAL:		PART NO. 476N9V05	
COLOR:	DRG CLASS		

