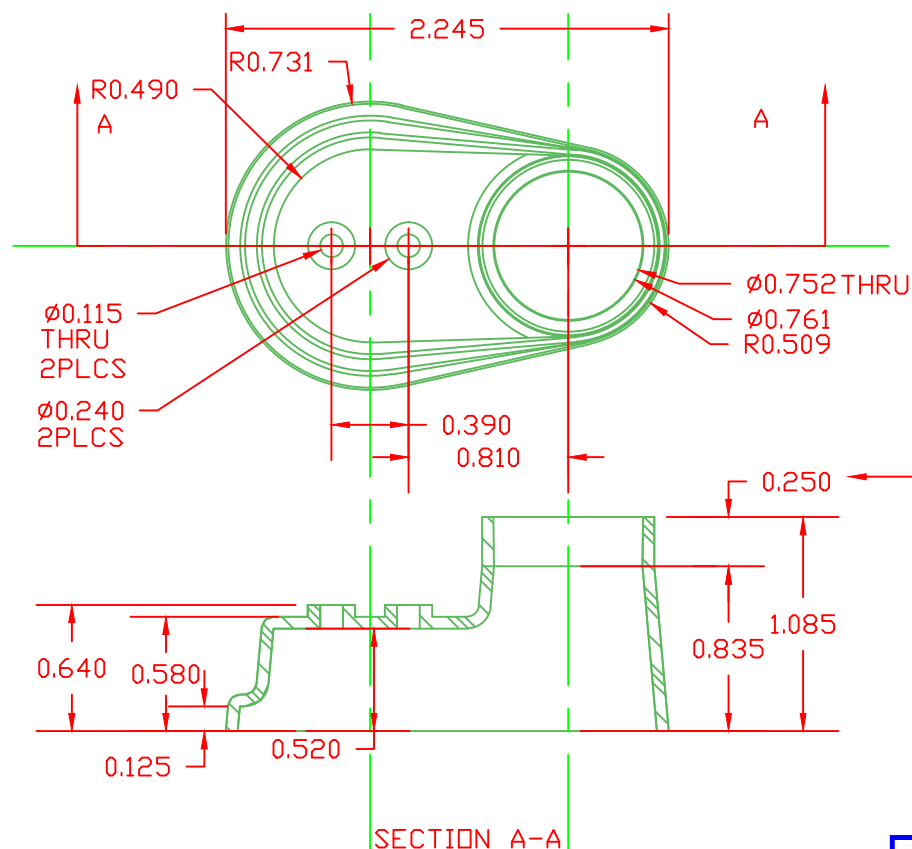


PROPRIETARY RIGHTS ARE CLAIMED FOR THE MATERIAL DISCLOSED IN THIS DRAWING.

LTR.	REVISIONS	DATE
A	REDESIGNED AND REDRAWN	09-08-99
B	ADDED DIMS 1.0, .752, .250 FOR PART RELEASE	09-28-99
C	EXTENDED BASE OVER POST CAP, ADDED EVAPORATION PORTS	10-15-99
D	REDESIGNED AND REDRAWN	12-06-99

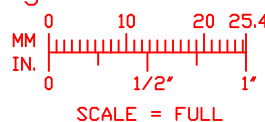



TYPICAL WALL THICKNESS = .06"  
EXCEPT AS NOTED

0° DRAFT THIS DISTANCE ONLY  
ON EXTERIOR OF PART  
1° DRAFT THIS DISTANCE ONLY  
ON INTERIOR OF PART  
ALL OTHER SURFACES, 5° TYPICAL.

VTE Material Part No:  
Material:  
Material Part No:  
Max. Operating Temp:  
Shore Durometer  
Specific Gravity:  
Ult. Elongation %:  
Tensile Strength PSI:  
U.L. Rating:

1101700102  
RED PVC  
M1170 FR RD or Equivalent  
105 C  
"A" 15 SEC. 70+/-5  
1.34  
275 Minimum  
1600 PSI Minimum  
94 V0



		<b>VTE Incorporated</b> 5437 Robinson Road, P.O. Box 790 Pellston, Michigan 49769 Telephone: 1-800-527-9256, 231-539-8000 FAX: 231-539-0914	
		REF: ***	DATE: 09-08-99
TITLE: TERM. COVER ASM. WNT #33		CHK'D BY: BRH	SCALE: NOTED
MATERIAL: SEE NOTES		PART NO. 492N9F02	
COLOR:	DRG CLASS: ***		