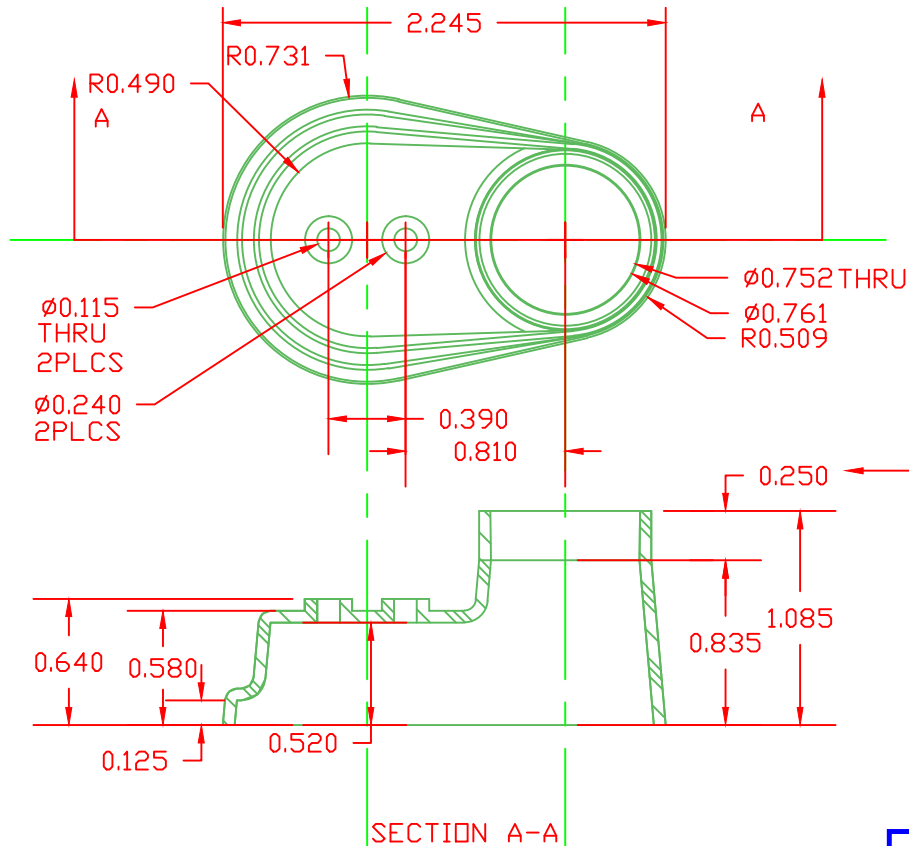


PROPRIETARY RIGHTS ARE CLAIMED FOR THE MATERIAL DISCLOSED IN THIS DRAWING.

| LTR. | REVISIONS  | DATE     |
|------|--|----------|
| A    | REDESIGNED AND REDRAWN                               | 09-08-99 |
| B    | ADDED DIMS 1.0, .752, .250 FOR PART RELEASE          | 09-28-99 |
| C    | EXTENDED BASE OVER POST CAP, ADDED EVAPORATION PORTS | 10-15-99 |
| D    | REDESIGNED AND REDRAWN                               | 12-06-99 |

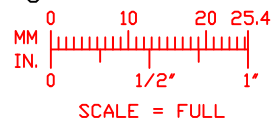


TYPICAL WALL THICKNESS = .06"  
EXCEPT AS NOTED

0° DRAFT THIS DISTANCE ONLY  
ON EXTERIOR OF PART  
1° DRAFT THIS DISTANCE ONLY  
ON INTERIOR OF PART  
ALL OTHER SURFACES, 5° TYPICAL.

VTE Material Part No:  
Material:  
Material Part No  
Max. Operating Temp:  
Shore Durometer  
Specific Gravity:  
Ult. Elongation %:  
Tensile Strength PSI:  
U.L. Rating:

1101700114  
BLACK PVC  
M1170-FR or Equivalent  
105 C  
"A" 15 SEC. 70+/-5  
1.34  
275 Minimum  
1600 PSI Minimum  
94 V0



VTE Incorporated  
5437 Robinson Road, P.O. Box 790  
Pellston, Michigan 49769  
Telephone: 1-800-527-9256, 231-539-8000  
FAX: 231-539-0914

|                                 |                 |                   |               |
|---------------------------------|-----------------|-------------------|---------------|
| REF: *****                      | DATE: 09-08-99  | DRN BY: BRH       | WEIGHT: ***** |
| TITLE: TERM. COVER ASM. WNT #33 |                 |                   | SCALE: NOTED  |
| MATERIAL: SEE NOTES             |                 | PART NO. 492N9F14 |               |
| COLOR:                          | DRG CLASS ***** |                   |               |