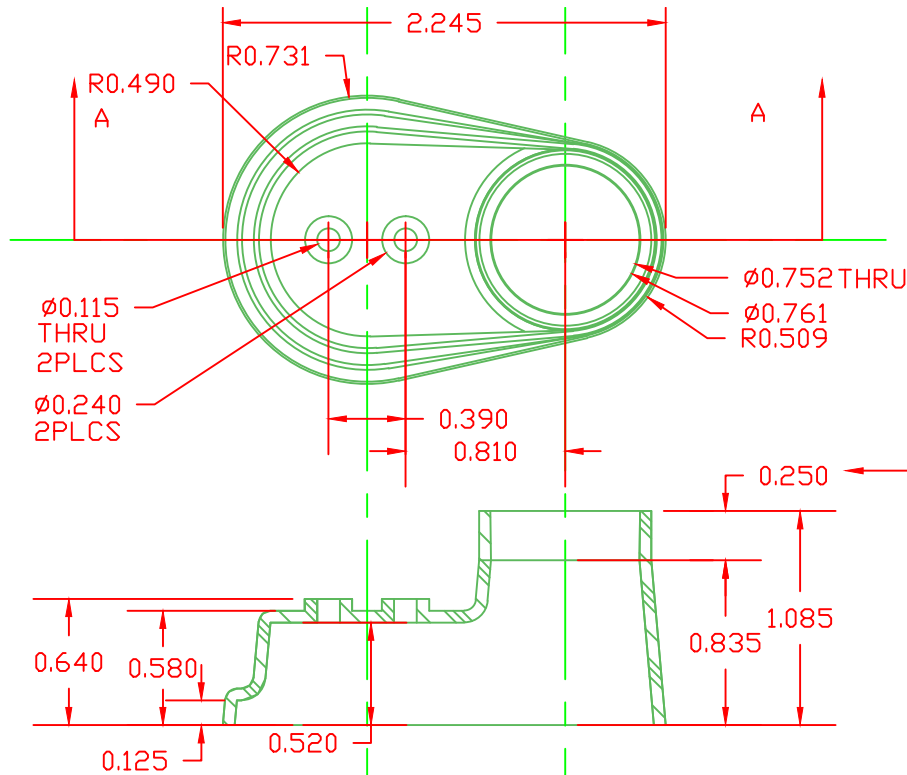


PROPRIETARY RIGHTS ARE CLAIMED FOR THE MATERIAL DISCLOSED IN THIS DRAWING.

LTR.	REVISIONS	DATE
A	REDESIGNED AND REDRAWN	09-08-99
B	ADDED DIMS 1.0, .752, .250 FOR PART RELEASE	09-28-99
C	EXTENDED BASE OVER POST CAP, ADDED EVAPORATION PORTS	10-15-99
D	REDESIGNED AND REDRAWN	12-06-99

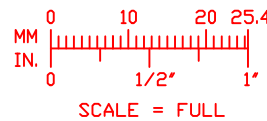


TYPICAL WALL THICKNESS = .06"  
EXCEPT AS NOTED

0° DRAFT THIS DISTANCE ONLY  
ON EXTERIOR OF PART  
1° DRAFT THIS DISTANCE ONLY  
ON INTERIOR OF PART  
ALL OTHER SURFACES, 5° TYPICAL.

VTE Material Part No:  
Material:  
Material Part No  
Max. Operating Temp:  
Shore Durometer  
Specific Gravity:  
Ult. Elongation %:  
Brittle Temp:  
Tensile Strength PSI:

SECTION A-A  
1101650102  
RED PVC  
9812-65-RED683  
105 C  
"A" 10 SEC. 67/62  
1.34  
475  
-44 C  
1547 PSI



U.L. Rating:  
MEETS:

94 V2  
FMVSS.302

		<b>VTE Incorporated</b> 5437 Robinson Road, P.O. Box 790 Pellston, Michigan 49769 Telephone: 1-800-527-9256, 231-539-8000 FAX: 231-539-0914	
		REF: *****	DATE: 09-08-99
TITLE: TERM. COVER ASM. WNT #33			SCALE: NOTED
MATERIAL: SEE NOTES		PART NO.	
COLOR: RED	DRG CLASS *****	492N9V02	