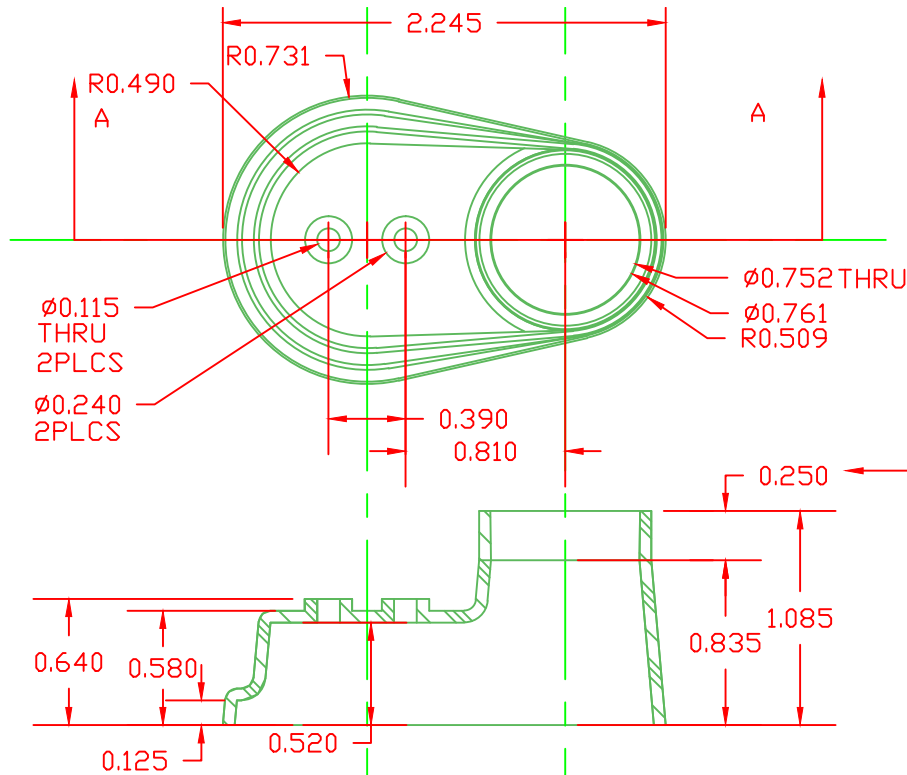


PROPRIETARY RIGHTS ARE CLAIMED FOR THE MATERIAL DISCLOSED IN THIS DRAWING.

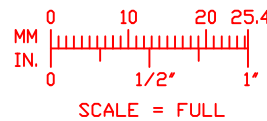
LTR.	REVISIONS	DATE
A	REDESIGNED AND REDRAWN	09-08-99
B	ADDED DIMS 1.0, .752, .250 FOR PART RELEASE	09-28-99
C	EXTENDED BASE OVER POST CAP, ADDED EVAPORATION PORTS	10-15-99
D	REDESIGNED AND REDRAWN	12-06-99



TYPICAL WALL THICKNESS = .06"
EXCEPT AS NOTED

0° DRAFT THIS DISTANCE ONLY
ON EXTERIOR OF PART
1° DRAFT THIS DISTANCE ONLY
ON INTERIOR OF PART
ALL OTHER SURFACES, 5° TYPICAL.


SECTION A-A
1101650114
BLACK PVC
9812-65
105 C
"A" 10 SEC. 67/63



VTE Material Part No:
Material:
Material Part No
Max. Operating Temp:
Shore Durometer
Specific Gravity:
Ult. Elongation %:
Brittle Temp:
Tensile Strength PSI:

U.L. Rating:
MEETS:

94 V2
FMVSS.302

		VTE Incorporated 5437 Robinson Road, P.O. Box 790 Pellston, Michigan 49769 Telephone: 1-800-527-9256, 231-539-8000 FAX: 231-539-0914	
		REF: *****	DATE: 09-08-99
TITLE: TERM. COVER ASM. WNT #33			SCALE: NOTED
MATERIAL: SEE NOTES		PART NO. 492N9V14	
COLOR: BLACK	DRG CLASS: *****		