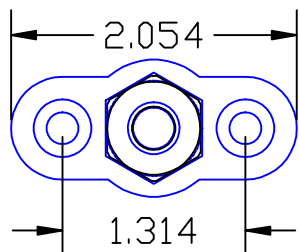
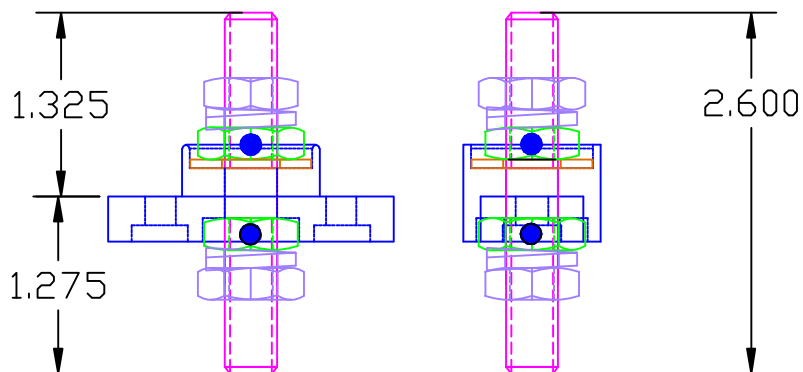


THE INFORMATION CONTAINED IN THIS DRAWING IS THE SOLE PROPERTY OF VTE INCORPORATED. ANY REPRODUCTION IN PART OR WHOLE WITHOUT THE WRITTEN PERMISSION OF VTE INCORPORATED IS PROHIBITED.

LTR.	REVISIONS	DATE
✖	*****	00-000-00

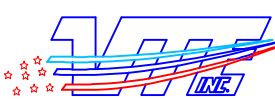


PACKAGE CONTAINS:	
1-	77237N02 - RED
1-	77237N14 - BLACK
4-	#8-32 x 1 THREAD FORMING SCREWS
1-	3" x 5" POLY BAG



TOLERANCE UNLESS OTHERWISE SPECIFIED:
 MOLDED PRODUCTS ONLY: ±.030"/±0.8mm
 HARDWARE ITEMS: ±.010"/±0.25mm
 RADIAL DIAMETERS TO BE MEASURED OVER MANDRELS,
 RING GAGES OR PIN GAGES OF SUITABLE SIZE

MAXIMUM RECOMMENDED FASTENER TORQUE: 12 FT./LBS. (144 IN./LBS.)
 MAXIMUM AMPERAGE: 250 AMPS AT 12 VDC

		VTE Incorporated 5437 Robinson Road, P.O. Box 790 Pellston, Michigan 49769 Telephone: 1-800-527-9256, 231-539-8000 FAX: 231-539-0914	
		REF: *****	DATE: 21AUG09
TITLE: REMOTE BATTERY JUNCTION TERMINAL			SCALE:
MATERIAL:		PART NO.	
COLOR: *****		72237-P	
DRG CLASS *****			