

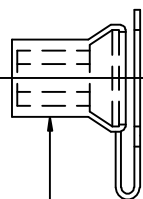
THE INFORMATION CONTAINED IN THIS DRAWING IS THE SOLE PROPERTY OF VTE INCORPORATED. ANY REPRODUCTION IN PART OR WHOLE WITHOUT THE WRITTEN PERMISSION OF VTE INCORPORATED IS PROHIBITED.

| LTR. | REVISIONS | DATE |
|------|-----------|----------|
| ✖ | ***** | 00-00-98 |

P/N 3861-000 3/8"-16 X .875"
BLIND HEX NUT (.625" HEX)
FOR POSITIVE CONNECTION

P/N 3861-001 5/16"-18 X .875"
BLIND HEX NUT (.625" HEX)
FOR NEGATIVE CONNECTION

P/N 5862-000
EXTERNAL RETAINING RING
2 PLCS.



P/N 3741-002
3/8"-16 THREAD FULL LENGTH
FOR POSITIVE CONNECTION
P/N 3741-003
5/16"-18 THREAD FULL LENGTH
FOR NEGATIVE CONNECTION

P/N 368D9P14
FACEPLATE WITH DIVIDER

P/N 319N8V02 COVER
FOR POSITIVE CONNECTION
P/N 319N8V14 COVER
FOR NEGATIVE CONNECTION

P/N 3646-001 3/8" X .062"
BRASS FLAT WASHER
FOR POSITIVE CONNECTION

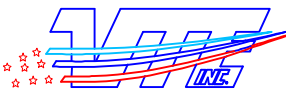
P/N 3645-A 5/16" X .062"
BRASS FLAT WASHER
FOR NEGATIVE CONNECTION

P/N 3844-003 3/8"-16
S.S. HEAVY HEX JAM NUT
FOR POSITIVE CONNECTION
P/N 3843-001 5/16"-18
S.S. HEAVY HEX JAM NUT
FOR NEGATIVE CONNECTION

P/N 3638-000 3/8" X .093"
S.S. SPRING LOCKWASHER
FOR POSITIVE CONNECTION
P/N 3642-000 5/16" X .075"
S.S. SPRING LOCKWASHER
FOR NEGATIVE CONNECTION

P/N 3646-000 3/8" X .062"
S.S. FLAT WASHER FOR POSITIVE CONNECTION
P/N 3645-000 5/16" X .062"
S.S. FLAT WASHER FOR NEGATIVE CONNECTION

P/N 3844-000 3/8"-16
HEAVY HEX JAM NUT
BRASS, TIN-PLATED
FOR POSITIVE CONNECTION
P/N 3843-000 5/16"-18
HEAVY HEX JAM NUT
BRASS, TIN-PLATED
FOR NEGATIVE CONNECTION



VTE Incorporated
5437 Robinson Road, P.O. Box 790
Pellston, Michigan 49769
Telephone: 1-800-527-9256, 231-539-8000
FAX: 231-539-0914

| | | | |
|-------------------------------------|-----------------|----------------|---------------|
| REF: ***** | DATE: 27JUN07 | DRN BY: BRH | WEIGHT: ***** |
| TITLE: DUAL POST BULKHEAD JUMPSTART | | CHK'D BY: BRH | SCALE: |
| MATERIAL: | | PART NO. | |
| COLOR: ***** | DRG CLASS ***** | 7230000 SERIES | |

DO NOT
SCALE

TOLERANCE UNLESS OTHERWISE SPECIFIED:
MOLDED PRODUCTS ONLY: ±.030"/±0.8mm
HARDWARE ITEMS: ±0.010"/±0.25mm
RADIAL DIAMETERS TO BE MEASURED OVER MANDRELS,
RING GAGES OR PIN GAGES OF SUITABLE SIZE