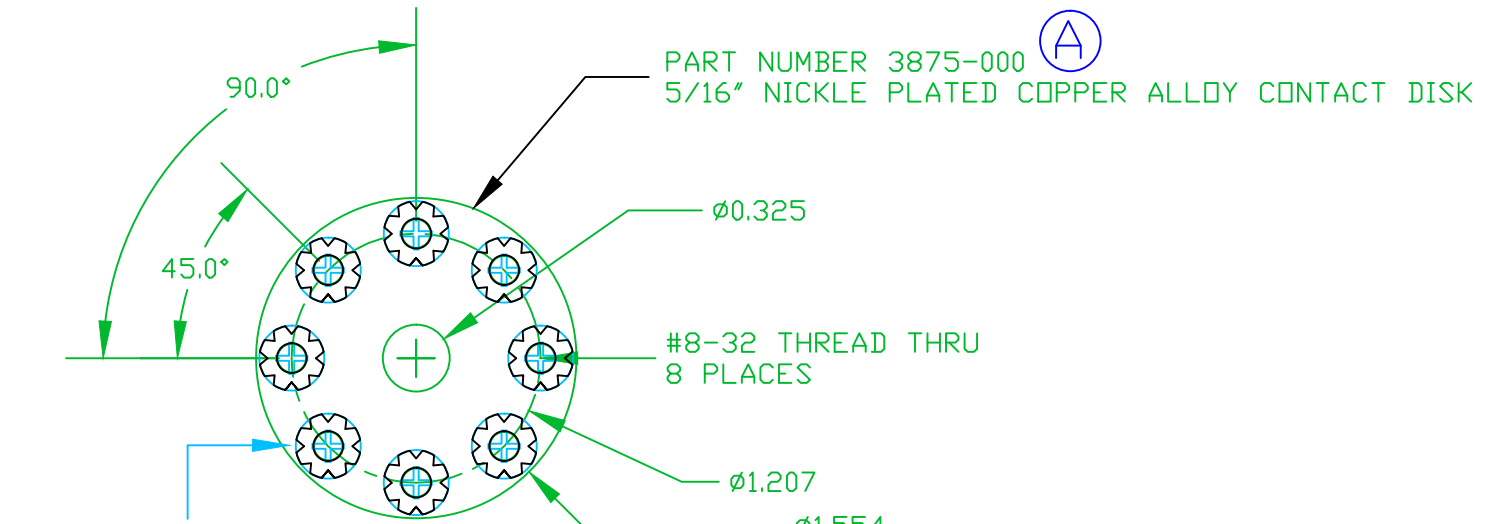


THE INFORMATION CONTAINED IN THIS DRAWING IS THE SOLE PROPERTY OF VTE INCORPORATED. ANY REPRODUCTION IN PART OR WHOLE WITHOUT THE WRITTEN PERMISSION OF VTE INCORPORATED IS PROHIBITED.

LTR.	REVISIONS	DATE
Ⓐ	ADDED COMPONENT P/N SUFFIXES	04APR06
Ⓑ	REVISED MATERIAL DESCRIPTION	30JUL15

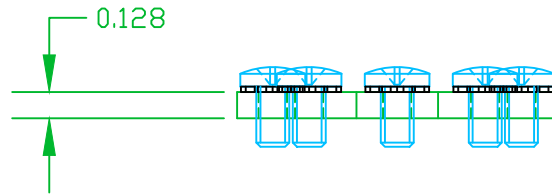
5/16" DISTRIBUTION DISK

MATERIAL: NICKEL PLATED COPPER ALLOY Ⓑ
(TYPE 360 BRASS)




Ⓐ 3870-000 #8-32 x 5/16" PHILLIPS SEMS SCREWS
(8 PLCS) 304 STAINLESS STEEL

TOLERANCE UNLESS OTHERWISE SPECIFIED:
HARDWARE ITEMS: ±.010"/±0.25mm
RADIAL DIAMETERS TO BE MEASURED OVER MANDRELS,
RING GAGES OR PIN GAGES OF SUITABLE SIZE



DO NOT SCALE

		VTE Incorporated 5437 Robinson Road, P.O. Box 790 Pellston, Michigan 49769 Telephone: 1-800-527-9256, 231-539-8000 FAX: 231-539-0914	
		REF: *****	DATE: 04JUN03
TITLE: 5/16" DISTRIBUTION DISK			SCALE:
MATERIAL:		PART NO.	
COLOR: *****	DRG CLASS *****	73875-000	