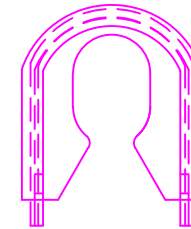
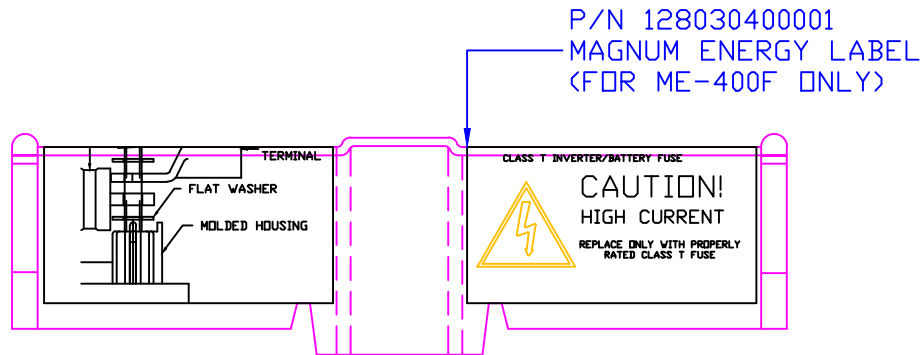
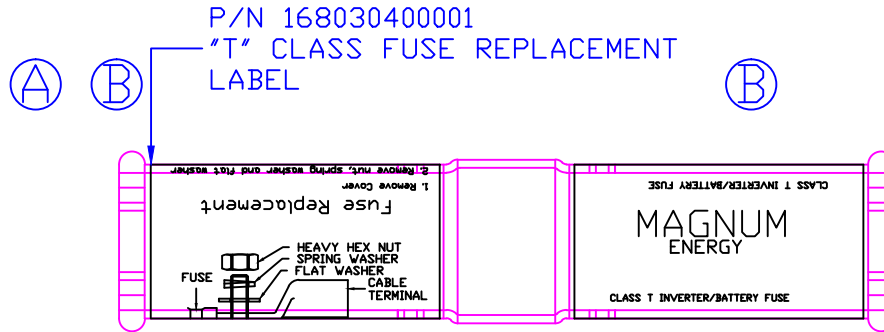


THE INFORMATION CONTAINED IN THIS DRAWING IS THE SOLE PROPERTY OF VTE INCORPORATED. ANY REPRODUCTION IN PART OR WHOLE WITHOUT THE WRITTEN PERMISSION OF VTE INCORPORATED IS PROHIBITED.


LTR.	REVISIONS	DATE
A	ADDED P/N 1680304001 LABEL, FUSE REPLACEMENT	06SEP07
B	168030400001 WAS 16803040014, ADDED LABEL P/N 128030400001	09NOV07
C	MATERIAL WAS CLEAR PVC	07JUL15



C

Material: Polypropylene Random Copolymer  
 Material Part No: COPYLENE CR350CL-02 or Equivalent  
 Max. Operating Temp: 170 Deg. F.  
 Durometer: 55-75 Shore D  
 Specific Gravity: .902  
 Ult. Elongation %: 13.6  
 Modulus PSI: 145000  
 Tensile Strength PSI: 4000

TOLERANCE UNLESS OTHERWISE SPECIFIED:  $\pm 0.30^{\circ}/\pm 0.8\text{mm}$   
 RADIAL DIAMETERS TO BE MEASURED OVER MANDRELS,  
 RING GAGES OR PIN GAGES OF SUITABLE SIZE

		<b>VTE Incorporated</b> 5437 Robinson Road, P.O. Box 790 Pellston, Michigan 49769 Telephone: 1-800-527-9256, 231-539-8000 FAX: 231-539-0914	
		REF: ME-400F	DATE: 23JUN05
TITLE: COVER, 400 AMP 'T' CLASS FUSE HOLDER			SCALE:
MATERIAL:		PART NO.	
COLOR: ****	DRG CLASS: ****	751X9P00	