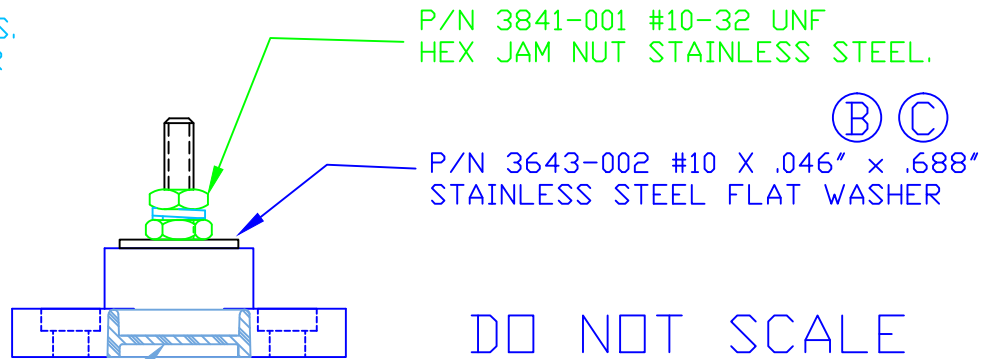
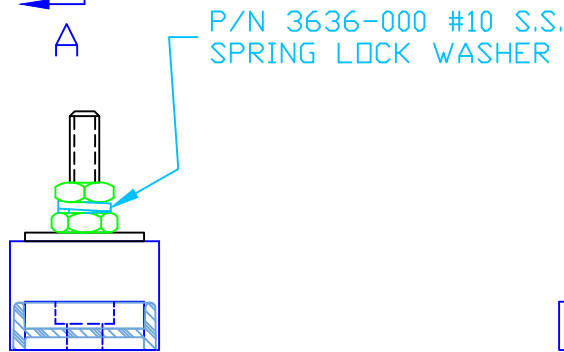
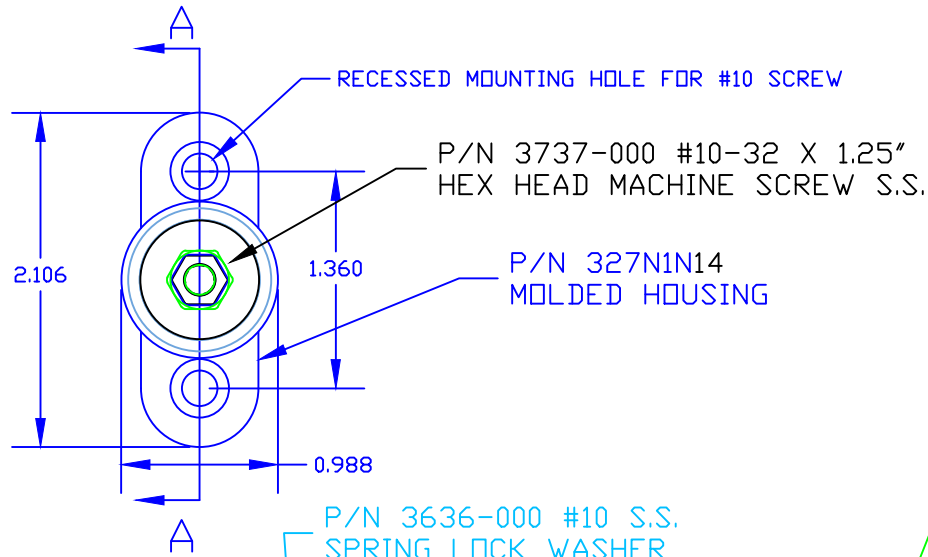


THE INFORMATION CONTAINED IN THIS DRAWING IS THE SOLE PROPERTY OF VTE INCORPORATED. ANY REPRODUCTION IN PART OR WHOLE WITHOUT THE WRITTEN PERMISSION OF VTE INCORPORATED IS PROHIBITED.

LTR.	REVISIONS	DATE	INT.
A	ADDED OPTIONAL CONSTRUCTION NOTE AND -00 SUFFIXES TO COMPONENT P/N'S	04APR06	BRH
B	ADDED OPTIONAL CONSTRUCTION NOTE FOR P/N 3643-002	28APR14	BRH
C	REMOVED OPTIONAL CONSTRUCTION NOTE	20OCT15	RAS
D	PN 329NOV** CHANGED PN 329NON**	23JUN16	MDL



P/N 329NON14
CAVITY PLUG (D)

DO NOT SCALE

TOLERANCE UNLESS OTHERWISE SPECIFIED: ±0.030"/±0.8mm
RADIAL DIAMETERS TO BE MEASURED OVER MANDRELS,
RING GAGES OR PIN GAGES OF SUITABLE SIZE

BASE MATERIAL:	GLASS-REINFORCED NYLON
BASE MATERIAL U.L. RATING:	94 HB
DIELECTRIC STRENGTH:	630 VOLTS/MIL PER ASTM D149
CURRENT RATING:	165 AMPS
TEMP. RISE AT LOAD:	52 DEG. F.
MAXIMUM RECOMMENDED TORQUE:	10 IN./LBS

	VTE Incorporated 5437 Robinson Road, P.O. Box 790 Pellston, Michigan 49769 Telephone: 1-800-527-9256, 231-539-8000 FAX: 231-539-0914		
	REF: ***	DATE: 20NOV03	DRN BY: BRH
TITLE: POST TYPE JUNCTION BLOCK			SCALE:
MATERIAL:		PART NO.	
COLOR: BLACK	DRG CLASS: ***	77010 N14 X	