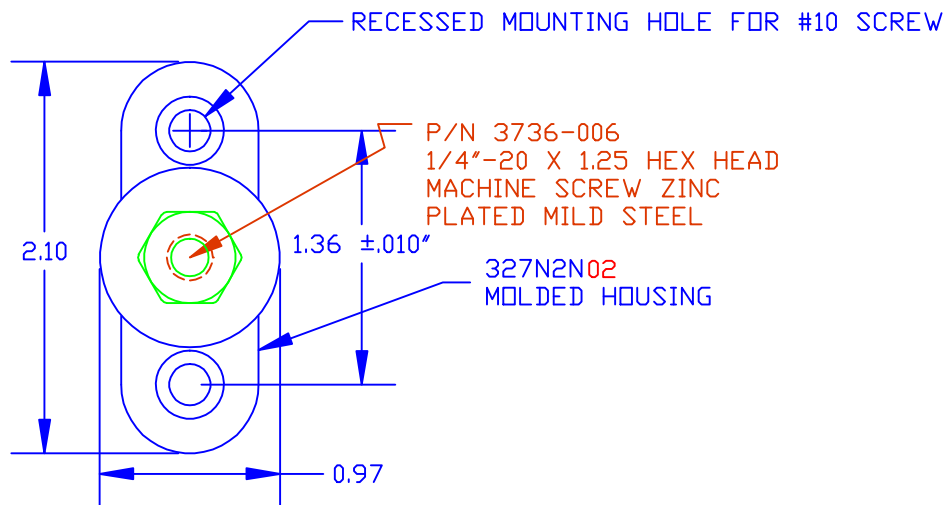


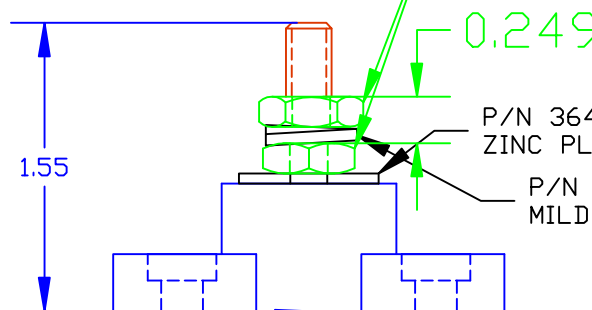
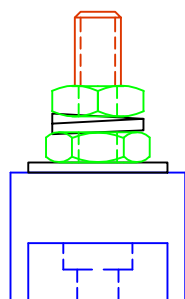
THE INFORMATION CONTAINED IN THIS DRAWING IS THE SOLE PROPERTY OF VTE INCORPORATED. ANY REPRODUCTION IN PART OR WHOLE WITHOUT THE WRITTEN PERMISSION OF VTE INCORPORATED IS PROHIBITED.

LTR.	REVISIONS	DATE



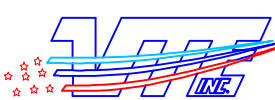
DO NOT  
SCALE

P/N 3842-004 1/4"-20 ZINC PLATED  
MILD STEEL HEAVY HEX JAM NUT  
2 PLCS.  
BOTTOM NUT FACTORY INSTALLED TO  
72 IN./LBS.



TOLERANCE UNLESS OTHERWISE SPECIFIED: ±.030"/±0.8mm  
RADIAL DIAMETERS TO BE MEASURED OVER MANDRELS,  
RING GAGES OR PIN GAGES OF SUITABLE SIZE

BASE MATERIAL: GLASS-REINFORCED NYLON  
 BASE MATERIAL U.L. RATING: 94 HB  
 DIELECTRIC STRENGTH: 630 VOLTS/MIL PER ASTM D149  
 VOLTAGE RATING: 48 VDC MAX.  
 CURRENT RATING: 165 AMPS @ 12 VDC  
 TEMP. RISE AT LOAD: 52 DEG. F.  
 MAXIMUM RECOMMENDED TORQUE: 60 IN./LBS.

		<b>VTE Incorporated</b> 5437 Robinson Road, P.O. Box 790 Pellston, Michigan 49769 Telephone: 1-800-527-9256, 231-539-8000 FAX: 231-539-0914	
		REF: *****	DATE: 30OCT12
TITLE: 1/4" SMALL JUNCTION STUD COMMERCIAL VERSION			SCALE:
MATERIAL:		PART NO.	
COLOR: RED	DRG CLASS *****	77025C N02	