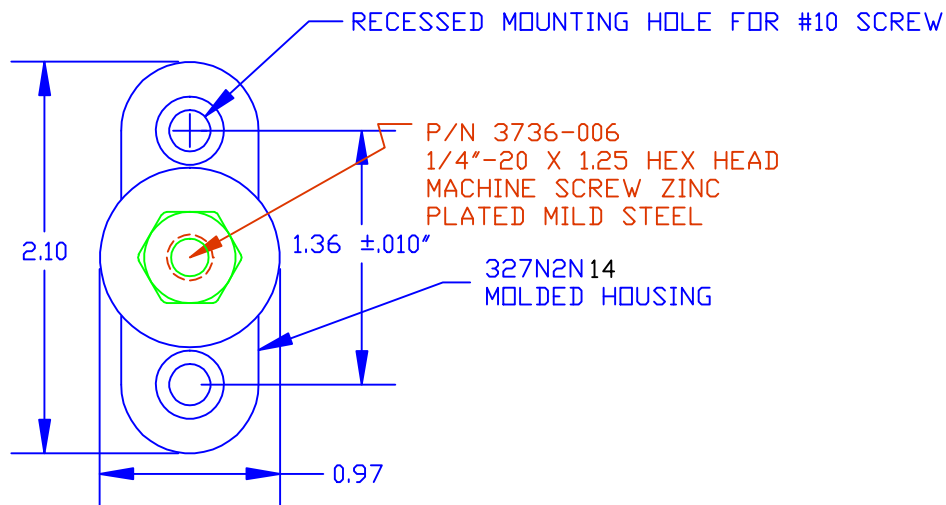


THE INFORMATION CONTAINED IN THIS DRAWING IS THE SOLE PROPERTY OF VTE INCORPORATED. ANY REPRODUCTION IN PART OR WHOLE WITHOUT THE WRITTEN PERMISSION OF VTE INCORPORATED IS PROHIBITED.

LTR.	REVISIONS	DATE

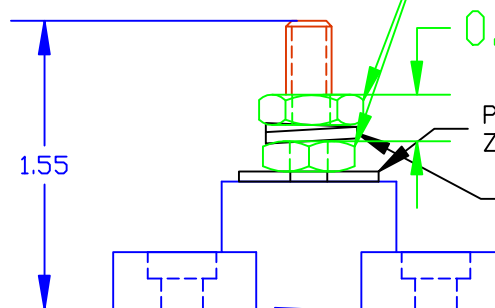
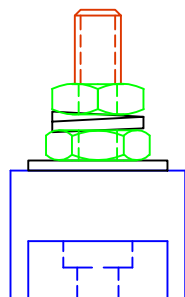


P/N 3736-006  
1/4"-20 X 1.25 HEX HEAD  
MACHINE SCREW ZINC  
PLATED MILD STEEL

327N2N14  
MOLDED HOUSING

DO NOT  
SCALE

P/N 3842-004 1/4"-20 ZINC PLATED  
MILD STEEL HEAVY HEX JAM NUT  
2 PLCS.  
BOTTOM NUT FACTORY INSTALLED TO  
72 IN./LBS.



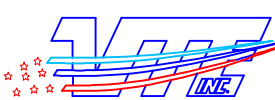
P/N 3644-004 1/4" X .055" X .750"  
ZINC PLATED MILD STEEL FLAT WASHER

P/N 3637-001 ZINC PLATED  
MILD STEEL SPRING LOCK WASHER

329N0V14  
CAVITY PLUG

TOLERANCE UNLESS OTHERWISE SPECIFIED: ±.030"/±0.8mm  
RADIAL DIAMETERS TO BE MEASURED OVER MANDRELS,  
RING GAGES OR PIN GAGES OF SUITABLE SIZE

BASE MATERIAL: GLASS-REINFORCED NYLON  
 BASE MATERIAL U.L. RATING: 94 HB  
 DIELECTRIC STRENGTH: 630 VOLTS/MIL PER ASTM D149  
 CURRENT RATING: 165 AMPS  
 TEMP. RISE AT LOAD: 52 DEG. F.  
 MAXIMUM RECOMMENDED TORQUE: 60 IN./LBS.

		<b>VTE Incorporated</b> 5437 Robinson Road, P.O. Box 790 Pellston, Michigan 49769 Telephone: 1-800-527-9256, 231-539-8000 FAX: 231-539-0914	
		REF: ***	DATE: 30OCT12
TITLE: 1/4" SMALL JUNCTION STUD COMMERCIAL VERSION			SCALE:
MATERIAL:		PART NO.	
COLOR: BLACK	DRG CLASS: ****	77025C N14	