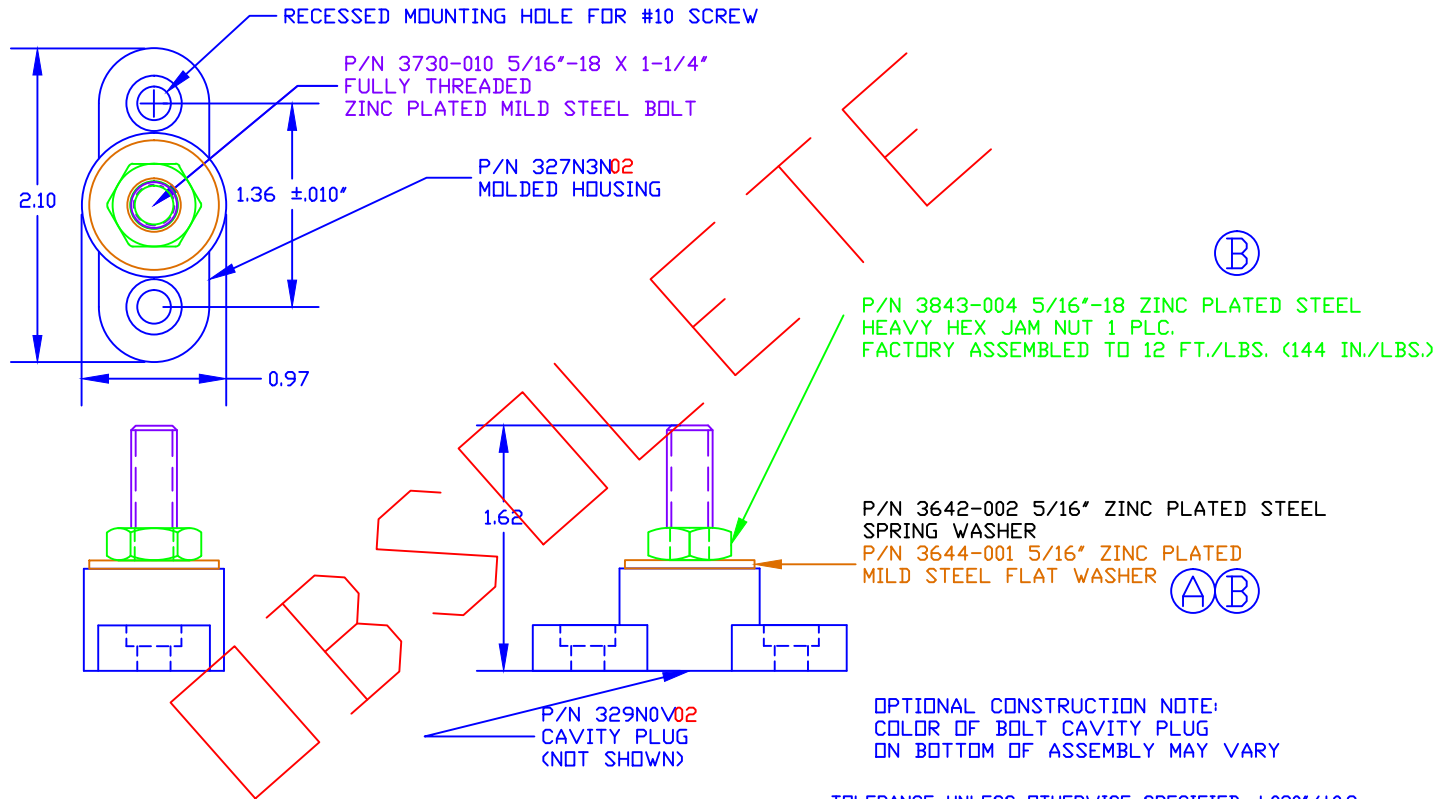


THE INFORMATION CONTAINED IN THIS DRAWING IS THE SOLE PROPERTY OF VTE INCORPORATED. ANY REPRODUCTION IN PART OR WHOLE WITHOUT THE WRITTEN PERMISSION OF VTE INCORPORATED IS PROHIBITED.


LTR.	REVISIONS	DATE
A	3645-000 WAS 3645-E	06APR10
B	3843-004 WAS 2 PLCS., NOW 1 PLC. 3644-001 WAS 3645-000	30OCT12



TOLERANCE UNLESS OTHERWISE SPECIFIED: ±0.030"/±0.8mm
 RADIAL DIAMETERS TO BE MEASURED OVER MANDRELS,
 RING GAGES OR PIN GAGES OF SUITABLE SIZE

BASE MATERIAL: GLASS-REINFORCED NYLON
 BASE MATERIAL U.L. RATING: 94 HB
 DIELECTRIC STRENGTH: 630 VOLTS/MIL PER ASTM D149
 VOLTAGE RATING: 48 VDC MAX.
 CURRENT RATING: 250 AMPS @ 12 VDC
 TEMP. RISE AT LOAD: 52 DEG. F.
 MAXIMUM RECOMMENDED TORQUE: 10 FT./LBS. (120 IN./LBS.)

DO NOT
SCALE

		VTE Incorporated 5437 Robinson Road, P.O. Box 790 Pellston, Michigan 49769 Telephone: 1-800-527-9256, 231-539-8000 FAX: 231-539-0914	
		REF: *****	DATE: 09APR09
TITLE: 5/16" SMALL JUNCTION STUD ZINC PLATED MILD STEEL HARDWARE ECONOMY VERSION			SCALE:
MATERIAL: RED		PART NO. 77031E N02	
COLOR: RED		DRG CLASS: *****	