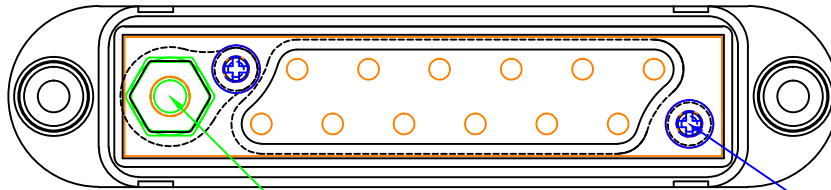


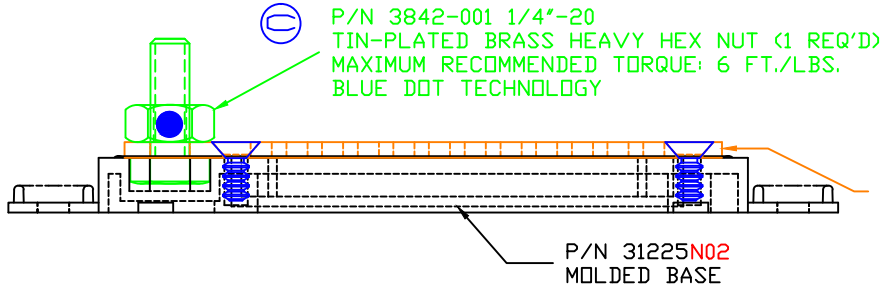
THE INFORMATION CONTAINED IN THIS DRAWING IS THE SOLE PROPERTY OF VTE INCORPORATED. ANY REPRODUCTION IN PART OR WHOLE WITHOUT THE WRITTEN PERMISSION OF VTE INCORPORATED IS PROHIBITED.

LTR.	REVISIONS	DATE
A	3874-000 WAS 3872, 3873-001 WAS 3873	03AUG06
B	73873-002 WAS 3873-001	16OCT06
C	3842-001 WAS 3842-002	20APR07



P/N 3736-002 1/4"-20 X .750"  
S.S. HEX HEAD MACHINE SCREW

P/N 3874-000 #8 X 3/8" PHILLIPS  
FLAT HEAD HIGH-LOW THREAD S.S.  
(2 REQ'D.)



P/N 3842-001 1/4"-20  
TIN-PLATED BRASS HEAVY HEX NUT (1 REQ'D)  
MAXIMUM RECOMMENDED TORQUE: 6 FT./LBS.  
BLUE DOT TECHNOLOGY

P/N 73873-002  
NICKEL PLATED  
BRASS ALLOY  
BUS STRIP

P/N 31225N02  
MOLDED BASE


INCLUDES HARDWARE PACKAGE CONTENTS LISTED BELOW

QTY.	VTE P/N	DESCRIPTION
12	3870-000	#8-32 X 5/16" STAINLESS STEEL PAN HEAD PHILLIPS SEMS SCREWS
1	3842-002	1/4"-20 STAINLESS STEEL HEAVY HEX NUT
1	3644-001	1/4" I.D. X 1/2" D.D. STAINLESS STEEL FLAT WASHER
1	3637-000	1/4" STAINLESS STEEL SPRING LOCK WASHER

BASE MATERIAL: GLASS-REINFORCED NYLON  
BASE MATERIAL U.L. RATING: 94 HB

INCLUDES P-16808110001 BLUE DOT MULTI LABEL, 1 PER CONTAINER

TOLERANCE UNLESS OTHERWISE SPECIFIED: ±.030"/±0.8mm  
RADIAL DIAMETERS TO BE MEASURED OVER MANDRELS,  
RING GAGES OR PIN GAGES OF SUITABLE SIZE

		<b>VTE Incorporated</b> 5437 Robinson Road, P.O. Box 790 Pellston, Michigan 49769 Telephone: 1-800-527-9256, 231-539-8000 FAX: 231-539-0914	
		REF: 070104006	DATE: 22AUG05
TITLE: 12-POINT TERMINAL STRIP			SCALE:
MATERIAL:		PART NO.	
COLOR: RED	DRG CLASS: ***	7712N3N02	