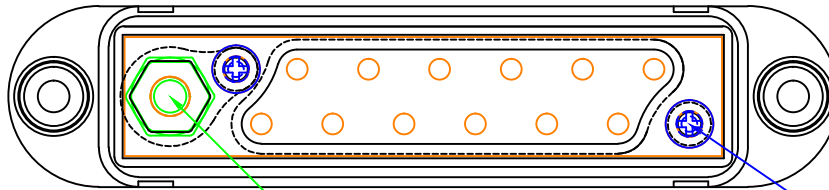


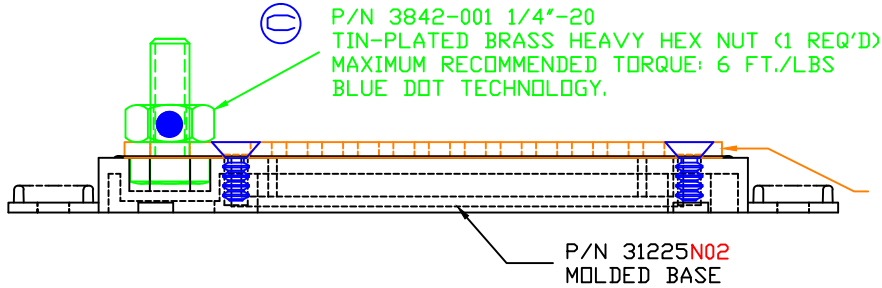
THE INFORMATION CONTAINED IN THIS DRAWING IS THE SOLE PROPERTY OF VTE INCORPORATED. ANY REPRODUCTION IN PART OR WHOLE WITHOUT THE WRITTEN PERMISSION OF VTE INCORPORATED IS PROHIBITED.

LTR.	REVISIONS	DATE
A	3874-000 WAS 3872, 3873-001 WAS 3873	03AUG06
B	73873-002 WAS 3873-001	16OCT06
C	3842-001 WAS 3842-002	20APR07



P/N 3736-002 1/4"-20 X .750"
S.S. HEX HEAD MACHINE SCREW

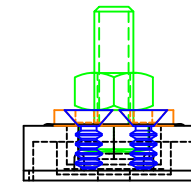
P/N 3874-000 #8 X 3/8" PHILLIPS
FLAT HEAD HIGH-LOW THREAD S.S.
(2 REQ'D.)



P/N 3842-001 1/4"-20
TIN-PLATED BRASS HEAVY HEX NUT (1 REQ'D)
MAXIMUM RECOMMENDED TORQUE: 6 FT./LBS
BLUE DOT TECHNOLOGY.

P/N 73873-002
NICKEL PLATED
BRASS ALLOY
BUS STRIP

P/N 31225N02
MOLDED BASE




INCLUDES HARDWARE PACKAGE CONTENTS LISTED BELOW

QTY.	VTE P/N	DESCRIPTION
12	3870	#8-32 X 5/16" STAINLESS STEEL PAN HEAD PHILLIPS SEMS SCREWS
1	3842-002	1/4"-20 STAINLESS STEEL HEAVY HEX NUT
1	3644-001	1/4" I.D. X 1/2" D.D. STAINLESS STEEL FLAT WASHER
1	3637	1/4" STAINLESS STEEL SPRING LOCK WASHER

TOLERANCE UNLESS OTHERWISE SPECIFIED: ±.030"/±0.8mm
RADIAL DIAMETERS TO BE MEASURED OVER MANDRELS,
RING GAGES OR PIN GAGES OF SUITABLE SIZE

BASE MATERIAL: GLASS-REINFORCED NYLON
BASE MATERIAL U.L. RATING: 94 HB



VTE Incorporated
5437 Robinson Road, P.O. Box 790
Pellston, Michigan 49769
Telephone: 1-800-527-9256, 231-539-8000
FAX: 231-539-0914

REF: 070104006	DATE: 22AUG05	DRN BY: BRH	WEIGHT: ***
TITLE: 12-POINT TERMINAL STRIP			SCALE:
MATERIAL:		PART NO.	
COLOR: RED	DRG CLASS: ***	7712N3N02	