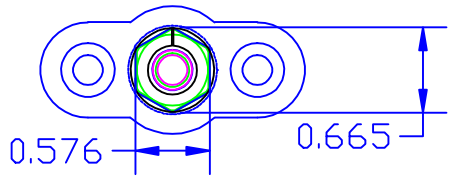
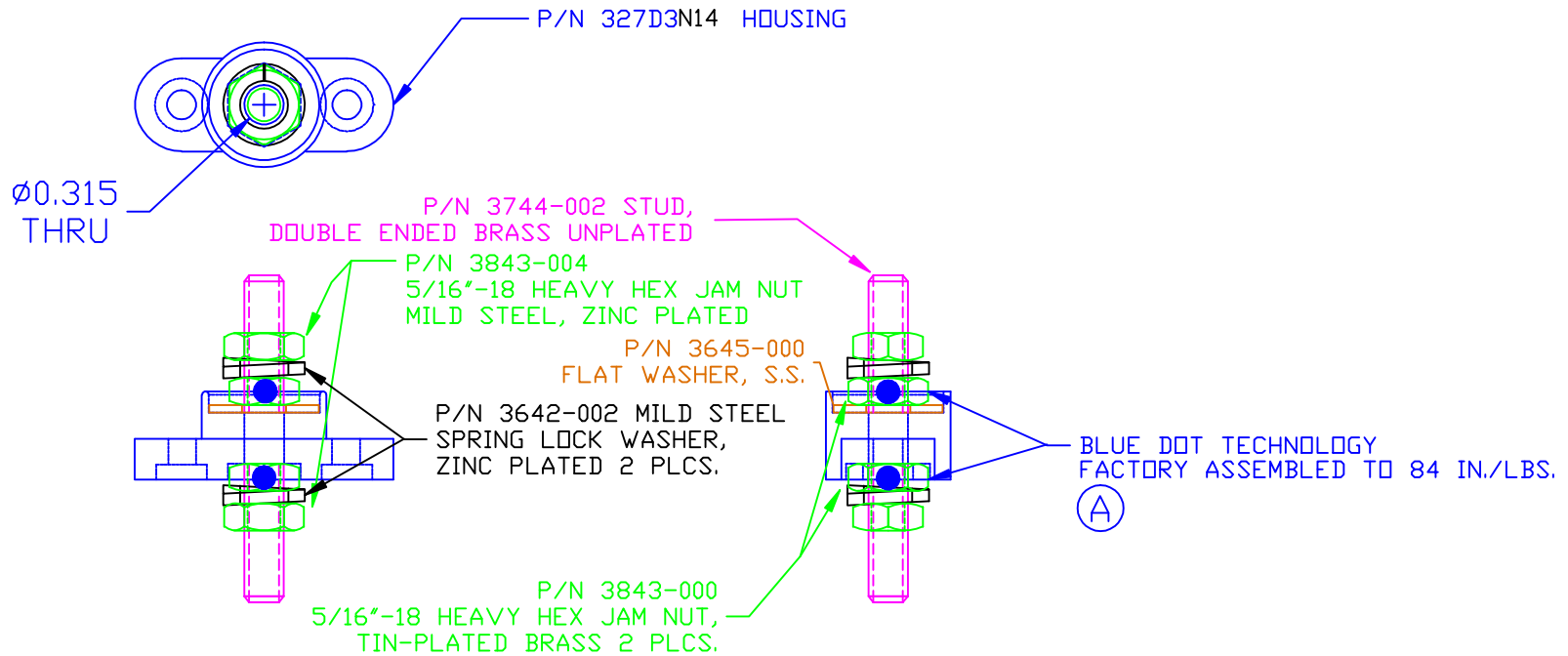


THE INFORMATION CONTAINED IN THIS DRAWING IS THE SOLE PROPERTY OF VTE INCORPORATED. ANY REPRODUCTION IN PART OR WHOLE WITHOUT THE WRITTEN PERMISSION OF VTE INCORPORATED IS PROHIBITED.

LTR.	REVISIONS	DATE
△	ADDED FACTORY TORQUE NOTE	14FEB12



BASE MATERIAL: GLASS-REINFORCED NYLON  
 BASE MATERIAL U.L. RATING: 94 HB

MAXIMUM RECOMMENDED FASTENER TORQUE: 8 FT./LBS. (96 IN./LBS.)  
 MAXIMUM AMPERAGE: 250 AMPS AT 12 VDC

TOLERANCE UNLESS OTHERWISE SPECIFIED:  
 MOLDED PRODUCTS ONLY: ±0.30"/±0.8mm  
 HARDWARE ITEMS: ±0.010"/±0.25mm  
 RADIAL DIAMETERS TO BE MEASURED OVER MANDRELS,  
 RING GAGES OR PIN GAGES OF SUITABLE SIZE

**VTE Incorporated**  
 5437 Robinson Road, P.O. Box 790  
 Pellston, Michigan 49769  
 Telephone: 1-800-527-9256, 231-539-8000  
 FAX: 231-539-0914

REF: *****	DATE: 16OCT07	DRN BY: BRH	WEIGHT: *****
TITLE: JUNCTION BLOCK, STUD TYPE, PASS-THRU			SCALE:
MATERIAL:		PART NO.	
COLOR: *****	DRG CLASS *****	77231 CN14	