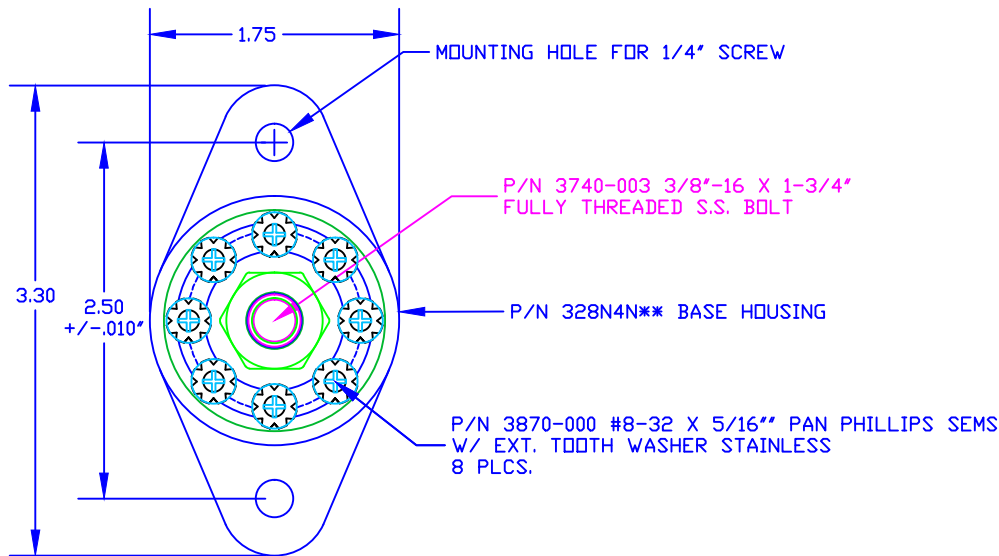
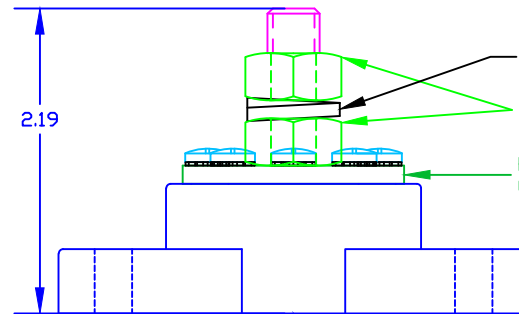
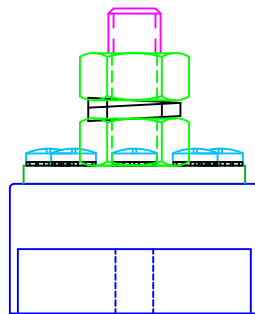


THE INFORMATION CONTAINED IN THIS DRAWING IS THE SOLE PROPERTY OF VTE INCORPORATED. ANY REPRODUCTION IN PART OR WHOLE WITHOUT THE WRITTEN PERMISSION OF VTE INCORPORATED IS PROHIBITED.

LTR.	REVISIONS	DATE	INT.
△	REPLACED P/N 3844-003 WITH P/N 3844-009	14APR16	RAS



DO NOT SCALE




P/N 329N0V** CAVITY PLUG (NOT SHOWN)

P/N 3638-000 3/8" S.S. SPRING LOCK WASHER
P/N 3844-009 3/8"-16 S.S. HEAVY HEX NUT (2 PLCS)
BOTTOM NUT FACTORY ASSEMBLED TO 15 FT./LBS (180 IN./LBS.)
P/N 3876-000 3/8" NICKEL PLATED COPPER CONTACT DISK

TOLERANCE UNLESS OTHERWISE SPECIFIED: ±.030"/±0.8mm
RADIAL DIAMETERS TO BE MEASURED OVER MANDRELS,
RING GAGES OR PIN GAGES OF SUITABLE SIZE

BASE MATERIAL: GLASS-REINFORCED NYLON
BASE MATERIAL U.L. RATING: 94 HB
BUS MATERIAL: NICKEL PLATED COPPER
VOLTAGE RATING: 48 VOLTS DC MAX.
BUS AMPERAGE RATING: 160 AMPS DC (8 X 20 AMP CIRCUITS)
TEMPERATURE RISE AT LOAD: 27.9 DEG. C. (52 DEG. F.)
RECOMMENDED MAXIMUM TORQUE: 12 FT./LBS. (144 IN./LBS.)

		VTE Incorporated 5437 Robinson Road, P.O. Box 790 Pellston, Michigan 49769 Telephone: 1-800-527-9256, 231-539-8000 FAX: 231-539-0914	
		REF: *****	DATE: 09APR03
TITLE: 3/8" POWER DISTRIBUTION POST			SCALE:
MATERIAL:		PART NO.	
COLOR:	DRG CLASS *****	77837-X	