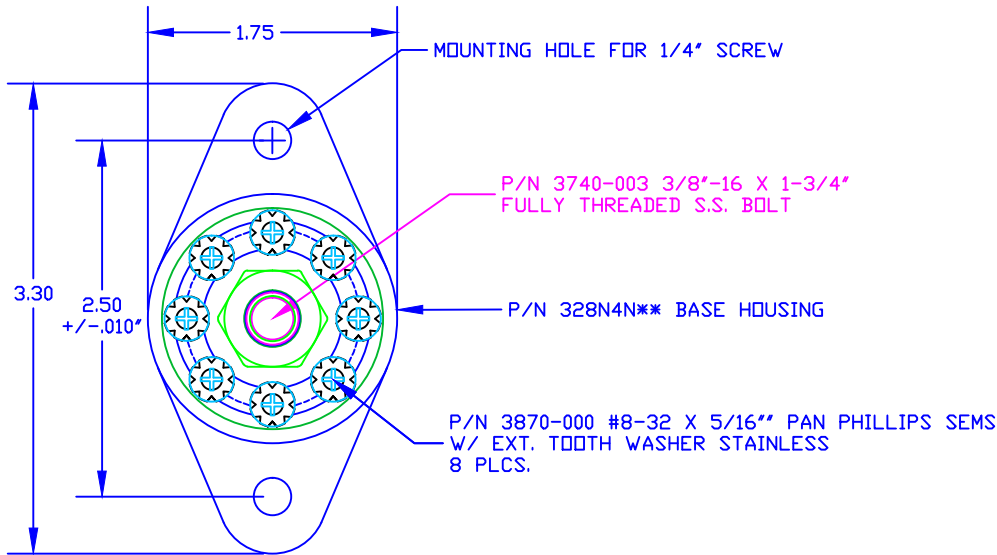
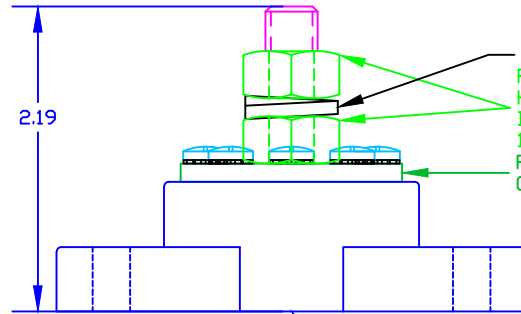
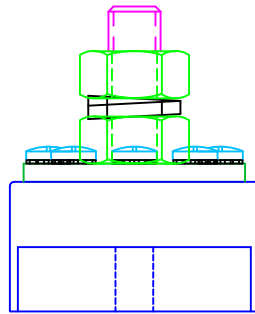


THE INFORMATION CONTAINED IN THIS DRAWING IS THE SOLE PROPERTY OF VTE INCORPORATED. ANY REPRODUCTION IN PART OR WHOLE WITHOUT THE WRITTEN PERMISSION OF VTE INCORPORATED IS PROHIBITED.

LTR.	REVISIONS	DATE	INT.
△	REPLACED P/N 3844-003 WITH P/N 3844-009	14APR16	RAS



DO NOT SCALE



- P/N 3638-000 3/8" S.S. SPRING LOCK WASHER
- P/N 3844-009 3/8"-16 S.S. HEAVY HEX NUT (2 PLCS)
- BOTTOM NUT FACTORY ASSEMBLED TO 15 FT./LBS (180 IN./LBS.)
- P/N 3876-000 3/8" NICKEL PLATED COPPER CONTACT DISK

P/N 329N0V\*\* CAVITY PLUG (NOT SHOWN)

TOLERANCE UNLESS OTHERWISE SPECIFIED: ±.030"/±0.8mm  
 RADIAL DIAMETERS TO BE MEASURED OVER MANDRELS,  
 RING GAGES OR PIN GAGES OF SUITABLE SIZE

BASE MATERIAL: GLASS-REINFORCED NYLON  
 BASE MATERIAL U.L. RATING: 94 HB  
 BUS MATERIAL: NICKEL PLATED COPPER  
 VOLTAGE RATING: 48 VOLTS DC MAX.  
 BUS AMPERAGE RATING: 160 AMPS DC ( 8 X 20 AMP CIRCUITS )  
 TEMPERATURE RISE AT LOAD: 27.9 DEG. C. (52 DEG. F.)  
 RECOMMENDED MAXIMUM TORQUE: 12 FT./LBS. (144 IN./LBS.)

VTE Incorporated  
 5437 Robinson Road, P.O. Box 790  
 Pellston, Michigan 49769  
 Telephone: 1-800-527-9256, 231-539-8000  
 FAX: 231-539-0914

REF: ***	DATE: 09APR03	DRN BY: BRH	WEIGHT: ***
TITLE: 3/8" POWER DISTRIBUTION POST		CHK'D BY: BRH	SCALE: NONE
MATERIAL: NOTED		PART NO.	
COLOR: BLACK	DRG CLASS: ****	77837-114	