

THE INFORMATION CONTAINED IN THIS DRAWING IS THE SOLE PROPERTY OF VTE INCORPORATED. ANY REPRODUCTION IN PART OR WHOLE WITHOUT THE WRITTEN PERMISSION OF VTE INCORPORATED IS PROHIBITED.

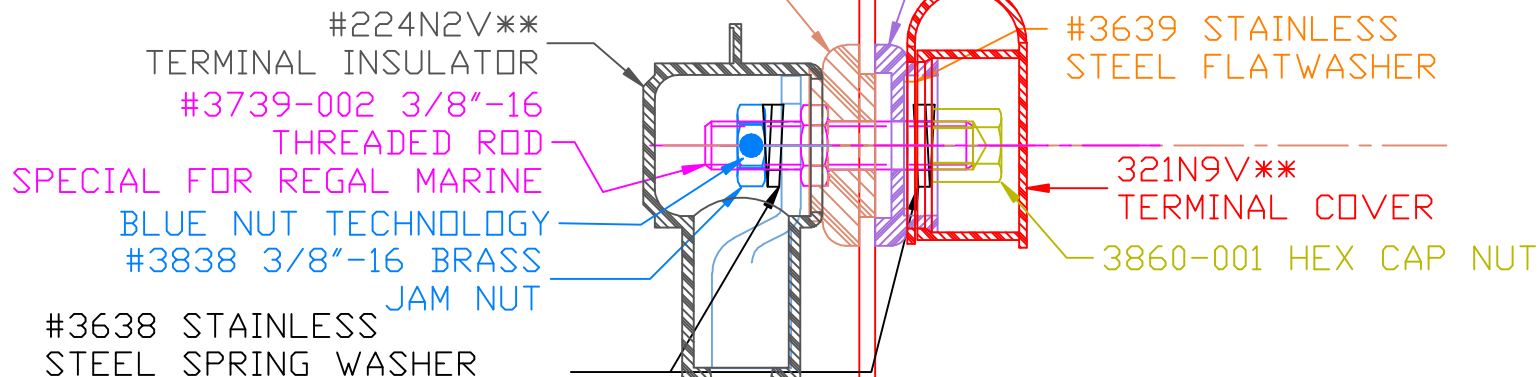
| LTR. | REVISIONS | DATE |
|------|---------------|------|
| ✘ | ✘ ✘ ✘ ✘ ✘ ✘ ✘ | *** |

VTE MAKES NO WARRANTY, EXPRESSED OR IMPLIED, AS TO THE SUITABILITY OF A PRODUCT FOR ANY INTENDED USE. THE CUSTOMER SHALL BEAR THE SOLE RESPONSIBILITY OF DETERMINING THE SUITABILITY OF ANY VTE PRODUCT FOR ITS END USE.

ASSEMBLY #7X3730
SPECIAL FOR REGAL
MARINE

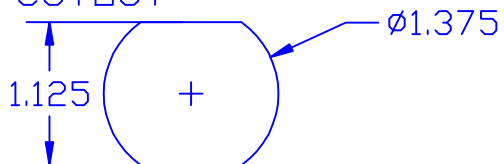
P/N 3530
INNER PANEL BUSHING
UP TO 1/8" PANEL THICKNESS

#3438 3/8" OUTER PANEL
BUSHING (WEATHERPROOF)




DO NOT SCALE

USE GREENLEE
PUNCH ASSEMBLY
#60098 FOR PANEL
CUTOUT



TOLERANCE UNLESS OTHERWISE SPECIFIED: ±.030"/±0.8mm
RADIAL DIAMETERS TO BE MEASURED OVER MANDRELS,
RING GAGES OR PIN GAGES OF SUITABLE SIZE

| | | |
|---|---|---------------|
|  | VTE Incorporated 5437 Robinson Road, P.O. Box 790 Pellston, Michigan 49769 Telephone: 1-800-527-9256, 231-539-8000 FAX: 231-539-0914 | |
| | REF: 7B3731 | DATE: 30MAR03 |

| | |
|---|-----------------|
| DRN BY: BRH | WEIGHT: **** |
| CHK'D BY: BRH | |
| TITLE: 3/8" POWER STUD FOR PANEL UNDER 1/8" | |
| SCALE: | |
| MATERIAL: | PART NO. 7X3730 |
| COLOR: **** | DRG CLASS: **** |