

THE INFORMATION CONTAINED IN THIS DRAWING IS THE SOLE PROPERTY OF VTE INCORPORATED. ANY REPRODUCTION IN PART OR WHOLE WITHOUT THE WRITTEN PERMISSION OF VTE INCORPORATED IS PROHIBITED.

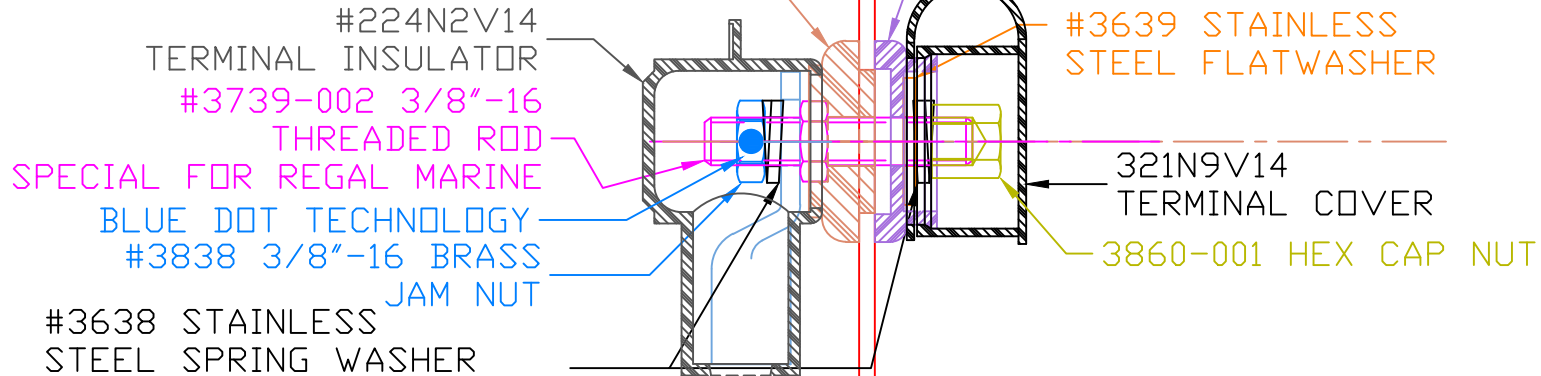
LTR.	REVISIONS	DATE
※※※	※※※ ※※※ ※※※ ※※※ ※※※ ※※※ ※※※	※※※

VTE MAKES NO WARRANTY, EXPRESSED OR IMPLIED, AS TO THE SUITABILITY OF A PRODUCT FOR ANY INTENDED USE. THE CUSTOMER SHALL BEAR THE SOLE RESPONSIBILITY OF DETERMINING THE SUITABILITY OF ANY VTE PRODUCT FOR ITS END USE.

ASSEMBLY #7X3730
SPECIAL FOR REGAL
MARINE

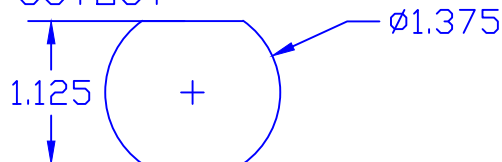
P/N 3530
INNER PANEL BUSHING
UP TO 1/8" PANEL THICKNESS

#3438 3/8" OUTER PANEL
BUSHING (WEATHERPROOF)



DO NOT SCALE

USE GREENLEE
PUNCH ASSEMBLY
#60098 FOR PANEL
CUTOUT



TOLERANCE UNLESS OTHERWISE SPECIFIED: $\pm 0.30^\circ / \pm 0.8\text{mm}$
RADIAL DIAMETERS TO BE MEASURED OVER MANDRELS,
RING GAGES OR PIN GAGES OF SUITABLE SIZE



VTE Incorporated
5437 Robinson Road, P.O. Box 790
Pellston, Michigan 49769
Telephone: 1-800-527-9256, 231-539-8000
FAX: 231-539-0914

REF: 7B3731	DATE: 30MAR03	DRN BY: BRH CHK'D BY: BRH	WEIGHT: ※※※
TITLE: 3/8" POWER STUD FOR PANEL UNDER 1/8"			SCALE:
MATERIAL:		PART NO.	
COLOR: ※※※※	DRG CLASS: ※※※※	7X373014	