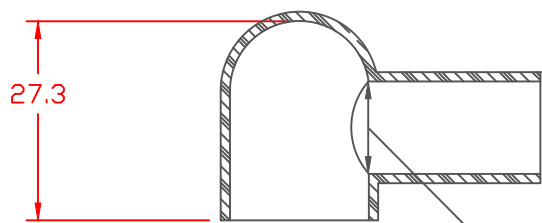
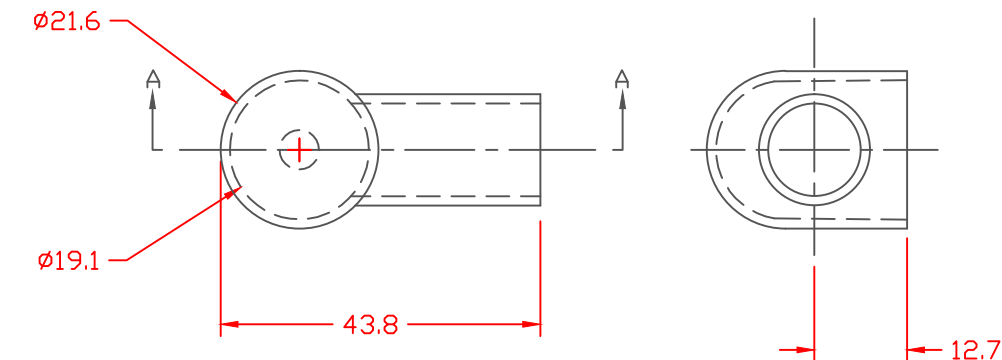


PROPRIETARY RIGHTS ARE CLAIMED FOR THE MATERIAL DISCLOSED IN THIS DRAWING.

LTR.	REVISIONS	DATE
A	ADDED MAXIMUM WALL THICKNESS DIMENSION	20APR06
B	ADDED TOLERANCE NOTE FOR DIA.	20APR06

THIS PRODUCT MEETS THE REQUIRMENTS OF M&G ELECTRONICS PART NUMBER 310105008



A

$1.27^{+0.00}_{-0.25}$ [$0.05^{+0.000}_{-0.010}$]

SECTION A-A

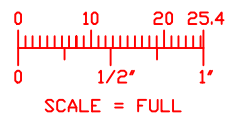
B


$12.70^{+0.25}_{-0.00}$ [$0.5^{+0.01}_{-0.00}$]

TOLERANCE UNLESS OTHERWISE SPECIFIED: $\pm 0.30^{\circ}/\pm 0.8\text{mm}$
 RADIAL DIAMETERS TO BE MEASURED OVER MANDRELS,
 RING GAGES OR PIN GAGES OF SUITABLE SIZE

VTE Material Part No:
 Material:
 Material Part No
 Max. Operating Temp:
 Shore Durometer
 Specific Gravity:
 Ult. Elongation %:
 Tensile Strength PSI:
 U.L. Rating:

1101700114
 BLACK PVC
 M1170-FR or Equivalent
 105 C
 "A" 15 SEC. 70+/-5
 1.34
 275 Minimum
 1600 PSI Minimum
 94 V0



		VTE Incorporated 5437 Robinson Road, P.O. Box 790 Pellston, Michigan 49769 Telephone: 1-800-527-9256, 231-539-8000 FAX: 231-539-0914	
		REF:	DATE:
	30SEP03	LWH	6 grams
TITLE:		EYELET TERMINAL BOOT	
MATERIAL: AS NOTED		PART NO.	
COLOR:		801N9F14	
DRG CLASS			