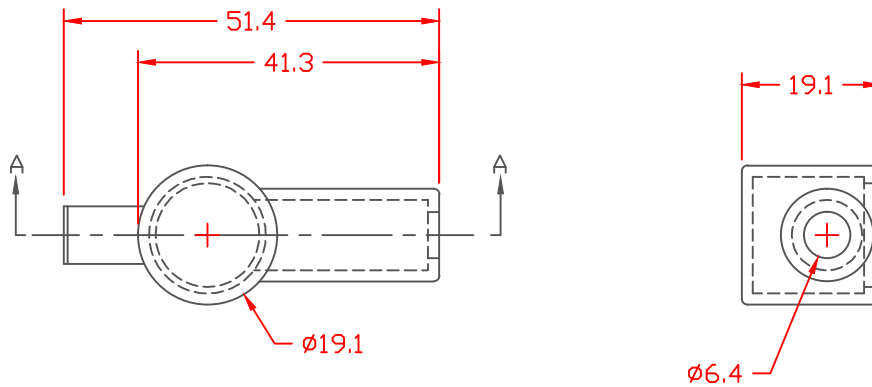


PROPRIETARY RIGHTS ARE CLAIMED FOR THE MATERIAL DISCLOSED IN THIS DRAWING.

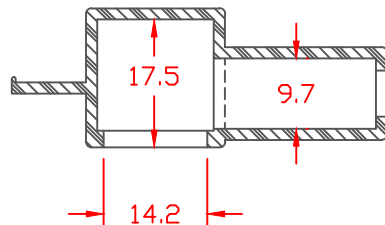
TYP. WALL THICKNESS = 1.5 (UNLESS NOTED)

TYP. RADIUS = .8

LTR.	REVISIONS	DATE
≠	*****	00-00-98



THIS PRODUCT IS NOT RECOMMENDED FOR SALE OR RESALE.
SEE ALTERNATE PART NUMBER 216N2

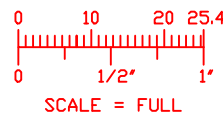



SECTION A-A

TOLERANCE UNLESS OTHERWISE SPECIFIED: ±0.30"/±0.8mm
RADIAL DIAMETERS TO BE MEASURED OVER MANDRELS,
RING GAGES OR PIN GAGES OF SUITABLE SIZE

VTE Material Part No: 1101650102
Material: RED PVC
Material Part No: 9812-65-RED683
Max. Operating Temp: 105 C
Shore Durometer: "A" 10 SEC. 67/62
Specific Gravity: 1.34
Ult. Elongation %: 475
Brittle Temp: -44 C
Tensile Strength PSI: 1547 PSI

U.L. Rating: 94 V2
MEETS: FMVSS.302



		VTE Incorporated 5437 Robinson Road, P.O. Box 790 Pellston, Michigan 49769 Telephone: 1-800-527-9256, 231-539-8000 FAX: 231-539-0914	
		REF:	DATE: 4-14-98
TITLE: TERMINAL INSULATOR BOOT		CHK'D BY:	
MATERIAL:		PART NO. 850N6V02	
COLOR:	DRG CLASS		